

PERSONNEL OFFICE ONEIDA TRIBE OF INDIANS OF WISCONSIN

POSITION: Community Planner
LOCATION: Oneida Planning Office
RESPONSIBLE TO: Planning Director
SALARY: Grade 19 (\$18,420-\$26,978) Dependent on Training and Experience
ISSUING DATE: January 21, 1986 **CLOSING DATE:** Until Filled

EQUAL EMPLOYMENT OPPORTUNITY STATEMENT

The Oneida Tribe of Indians of Wisconsin does not discriminate on the basis of race, color, national origin, sex, religion, age and handicapped status in employment or the provision of services. However, individuals of Indian ancestry will be given preference by law in initial employment or re-employment.

APPLICATIONS/RESUMES SHALL BE SUBMITTED TO:

Personnel Office
 Oneida Tribe of Indians of Wisconsin
 P.O. Box 365
 Oneida, WI 54155

State of Wisconsin Office of the Governor American Indian Veterans

As a follow-up to a federal statistical study of American Indian veterans recently provided to tribal chairmen and attorneys, Governor Anthony S. Earl and the Wisconsin Department of Veterans Affairs want to remind Wisconsin's Native American veterans of state veterans programs.

The first mortgage home loan program offers persons with a household income of less than \$27,000, low interest, long-term rates for housing, and a second mortgage program provided opportunity for home improvement.

Economic assistance loans at 6% interest for special projects or debt consolidation are available to veterans with a household income of \$21,000 or less.

A part-time study program provides books and supplies, and up to \$1,000 per year in outright grants for veterans desiring college or vocational schooling.

It is important for Native American veterans to know that the State of Wisconsin is concerned about the medical, housing, education and economic assistance needs of men and women who have served the country.

If Native American veterans are interested in checking out their eligibility for any of our programs, we encourage them to visit their local county veterans service officer, or to contact Harvey Stower directly at the Wisconsin Department of Veterans Affairs, P.O. Box 7843, Madison, Wisconsin, 53707, telephone number (608) 266-1378.

KALIHWI•SAKS The Official Publication of the Oneida Nation

This publication is distributed free to all enrolled Oneida Tribal members. If you know of someone who is not receiving KALIHWI•SAKS, please have them send their name and address as they are listed on the Oneida rolls to:

KALIHWI•SAKS
 Oneida Tribe of Indians
 of Wisconsin
 P.O. Box 365
 Oneida, Wisconsin 54155
 or call:
 414 — 869-1260

KALIHWI•SAKS is distributed locally at the beginning of each month. Distribution nationwide is made at the end of each month.

STAFF:

Bobbi Webster — Editor

ORIGINAL COVER DESIGN CONCEPT:

Mary Lee LeMieux

Redrawn by:
Loren Moore

Layout and Design:
Bobbi Webster

Table of Contents

| | |
|---|-------|
| Former Steelworker | 2 |
| Help for Elders available | 3 |
| “86” Tour of Oneida Reservation | 4 |
| “Rose” | 5 |
| Babes in Oneida Tribal School | 6 |
| Happy Daze | 7 |
| Health Center News | 8-15 |
| Education News | 16-18 |
| Recreation Announcement | 19 |
| Birthdays-Congrats-Etc. | 20 |

**NEXT DEADLINE FEBRUARY 12 FOR
PUBLICATION FEBRUARY 21.**

STEEL WORKER WALKS A NARROW BEAM



Purcell Powless scrambled across steel girders when the mighty Sears Tower was built in Chicago and swayed precariously from the Mackinac Bridge when it was constructed between Michigan's two peninsulas.

The steelworker returned home to become Chairman of the Oneida Indian Tribe of Wisconsin and to engineer its multi-million-dollar empire.

Powless fell once as a steelworker, plunging one story from the 30th floor of the Sears Tower, and survived. He also had a setback as a politician. After serving as Tribal Chairman since 1967, Powless lost one election, but regained the chairmanship after one year.

Under his direction, the Tribe's budget grew from \$375,000 in 1973 to a projected \$34 million in 1986. It has not been easy.

Like a steelworker on a narrow beam, Powless has had to maintain a balance in areas where racial issues hamper economic development and 20th century progress encroaches on traditional Indian culture.

"I can remember when I had a piece of paper from the Department of Interior that would guarantee 90 percent of our loan -- and the banks would not lend us money," Powless said.

But the Oneidas now own shares in a bank holding company, thanks to lucrative tribal enterprises such as a Bingo operation and Tobacco sales. The Tribe continues to diversify and is constructing a \$10.5 million hotel across from Green Bay's Austin Straubel Airport.

"You don't put all our eggs in one basket," said Powless, who turned 60 Christmas day.

Despite his tenure as Chairman, Powless is reluctant to accept credit for the Tribe's economic achievements. He said they resulted from a unified tribal effort.

"I think it's the people around you who are supporting you," he said.

But the fact Powless has been unseated as Chairman only once, and that his time out of office lasted only a year, says a lot. Under tribal law, 50 members can call a General Meeting and if they have a quorum of only 75 members, a majority vote will overturn any Tribal action.

It happened after Powless was defeated by one vote in his 1981 re-election bid. A recount showed he won, but the Tribal Council stood by the original count. Powless accepted the decision and left the area to return to work as a steelworker.

A year later he was re-elected when the Tribe put together a quorum and voted his successor, Gary Metoxen, out of office.

"That break made it very clear to everybody that something had to be done and we had to be ready to accept some changes," Tribal Treasurer Kathy Hughes said.

Although the Tribe's economic growth has resulted in more shared responsibilities, Powless was saddled with most of the decisions in the beginning, said Gordon McLester, Tribal Secretary.

"I think he took quite a bit of that leadership upon himself and did what had to be done," he said.

Powless earned enough of a living as a steelworker to support his wife and eight children, but he said his union card did not erase prejudice.

"On construction jobs, you know when you're getting near the end of the job; who they're going to lay off first," he said. "I learned how to accept that and I learned how to use it. I seen the white guys are going to take care of the white guys."

Rather than fight prejudice, Powless said he planned on an early release from the job and lined up another as soon as projects began winding down. He said the lesson of planning ahead has carried into his Tribal chairmanship.

Powless said he earns less than \$30,000 a year as Tribal Chairman. "I'm not interested in getting rich; just making a good living, which I made all my life," he said.

As Chairman, Powless wants the same for the 4,000 Oneidas living in Brown and Outagamie counties.

"We just want to succeed financially; upgrade the standard of living for everybody," he said.

Vic Watia

POW-WOW NEWS

7th Annual UNITED TRIBES of Milwaukee Inc.
TRADITIONAL POW-WOW
Sat. & Sun. March 15 & 16, 1986
At the Richard St. Armory

For More Info call Richard Watkins
414-289-9272
or Charlene Wheelock
414-643-6058

UW LACROSSE POW-WOW
April 19 & 20, 1986
For Further Information Write to:
Minority Affairs Office
223 Main Hall
LaCrosse, WI 54601

4th ANNUAL BEAR RIVER POW-WOW
LAC DU FLAMBEAU
JULY 11,12& 13, 1986

FIRST BEAR RIVER POW-WOW BENEFIT
MARCH 8-9
ALSO INCLUDED AN ALL INDIAN MEN'S
BASKETBALL TOURNAMENT
POW-WOW IN EVENING
ON SATURDAY

For Further Info., Call Ernie St. Germaine
715-588-3303

FOR SALE

Reconditioned Fiddle \$80 Used Banjo \$40.
Call Loretta Metoxen at 869-2052.

SR 3000 Series Stereo, dual cassette, equalizer, turntable, AM-FM Radio. Was \$569.00, now \$400.00. Can be seen at 510 Adam Drive or call Kurt Elm at 336-1281 or 869-2737.

New vinyl heater cab, fits 1970 International Tractor, includes windshield wiper, traps heat from motor to heat cab. To inquire, call 833-7404 or 869-1059.

Announcements and Ads

Gas is now being pumped daily from 8:00 AM to 4:30 PM Monday thru Friday at the Oneida One Stop. On every Wednesday gas is 3¢ less per gallon, so filler up!

VFW regular meetings are held on the first Tuesday of every month at the VFW Clubhouse in Oneida, members please attend.

Horses trained w/ experienced rider; trail riding or competitive showing (halter, english & western pleasure); most speed events-will work with owner; have shown successfully in area shows; reasonable. Call 869-2138, ask for KORY.

Making hand made furniture: knick-knack show cases, gun cases, cabinets, picture frames, desk, dressers, lawn furniture, picnic tables.

RALPH DENNY 869-2022
757 Skylark Dr. Corner of E-EE
DePere, WI 54115

Taking orders for spring planting in Landscaping: seeding, planting, shrubs, grading, starting a New Business.

Ralph Denny 869-2022

★ATTENTION TRIBAL MEMBERS★

Agricultural land for rent total 61 acres on Moore Road. Terms are \$10 per acre per year for five (5) years.

The Oneida Tribal Land Policy has been reviewed and revised by the Land Committee. Copies of this policy will be available as soon as final approval is received from the Business Committee.

Land in Oneida on County 'J' 2.5 acres, landscaped with well percs for mound system. \$16,900.00. 869-1434, Don & Kim Hill.

A SPECIAL THANKS

A special thank you from Bill Danforth and family for all the people who sent cards, gifts, called, brought flowers, and to all the people who came to see him, to be by his side, and in heart, while he was in the hospital. A special thanks to all my brothers and sisters, family and friends, Father Dolan, and Brother Nolan.

Thank you all very very much. We deeply appreciate it.

Bill Danforth and Family

Guest Speakers/Runners at 3rd Annual Oneida Tribal School Fun(d) Running Events

BILLY MILLS

“The greatest degree of competition is not for me to compete against you, or you against me, but for each of us to reach within the depths of our capabilities and to perform to the greatest of our potential.”
—Billy Mills

Tokyo, Japan — 1964 — the 10,000 meter final — Ron Clarke, Australia’s world record holder in the event, and Tunisia’s Mohammed Gammoudi were the favorites. Yet at the half-way point a Lakota Sioux Indian runner from Pine Ridge, South Dakota was leading. His competitors challenged the unheralded American many times during the race, taking the lead, then giving it up. Running shoulder to shoulder from the beginning, the outcome wouldn’t be decided until the final lap.

Billy Mills, running in only his fifth 10,000 meter race ever, was elbowed by the challengers on the last turn. Trailing with only 100 meters left, he began his desperate drive for the gold medal. Billy overtook Clarke and Gammoudi with three strides to go and created one of the greatest upsets in Olympic Games History. He became the first and is still the only American to ever win this event. However, this event is not necessarily his greatest achievement.

His test and greatest triumph was overcoming his past — the poverty of reservation life, prejudice, and the complex realities he and his seven brothers and sisters faced when they were orphaned early in life.

In the tradition of turning athletic accomplishment into movie magic, Billy’s life story was made into a major motion picture entitled “Running Brave”. The film was produced by Englander Productions and stars Robby Benson. In October, 1984 “Running Brave” won Best Film at the 10th Annual International Sports Film Festival in Rennes, France.

HONORS AND AWARDS

- 1964 — Olympic Gold Medalist, 10,000 Meter Run (6.2 miles) with a time of 28:24.4
- 1964 — Olympic Marathon, Tokyo, Japan
- 1965 — Established U.S.A. Indoor 3 Mile Record of 13:25.4
- 1965 — Established World Six Mile Run Record
- 1972 — Ten Outstanding Young Men of America, U.S. Jaycees
- 1974 — United States Track and Field Hall of Fame
- 1976 — National Track and Field Hall of Fame
- 1978 — American Indian Athletic Hall of Fame
- 1979 — 1980 President’s Council of Physical Fitness and Sports
- 1983 — National Road Runners Hall of Fame
- 1984 — United States Olympic Hall of Fame
- 1984 — Carried Olympic Flag, Olympic Games, Los Angeles
- 1985 — National Showing of “Running Brave” starring Robbie Benson SHOWTIME and HOME BOX OFFICE Cable Stations

ROY PIRRUNG

Roy Pirrung is one of the premier ultra-marathoners in the state of Wisconsin and the nation. His achievements include:

- Wisconsin State Record Holder in 24 Hour Run with 137 Miles 5,268 Feet
- President of Shoreline Striders Running Club (Sheboygan, WI)
- Completed 10 Marathons with a Personal Best of 2:38
- Fifth Place Finisheer in 1985 Ice Age Trail 50 Mile Run
- Completed 3 Marathons in 1985

HELP FOR ELDERS AVAILABLE

SSI (or Supplemental Security Income) is a very important program for many older persons. In Brown County, there are about 700 people over age 65 who are receiving these benefits. The purpose of the program is to provide extra cash income every month to those with low income and limited assets.

An added automatic “bonus” is that persons found eligible for SSI also become eligible for Medical Assistance, which pays most health care costs after medicare coverage. In fact, for many older people, the need for these medical benefits far outweighs the need for the extra SSI check.

A person on SSI is allowed to have a home and a car. To qualify, monthly income from all sources (including Social Security, Pension, Interest, Earnings, Etc.) as well as liquid assets, cannot exceed certain limits:

| | INCOME LIMITS | ASSET LIMITS |
|------------|---------------|--------------|
| INDIVIDUAL | \$457.70 | \$1,700 |
| COUPLE | \$688.22 | \$2,550 |

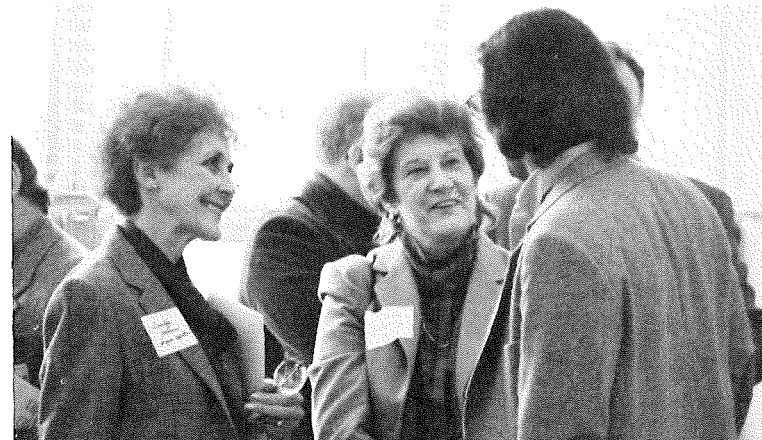
A person is also allowed to have an irrevocable burial trust (value \$1,500) and a life insurance policy (face value \$1,500). Often it may appear at first glance that a person is not eligible if they don’t exactly meet the necessary criteria; however, there are ways to arrange assets, for example, which are commonly used to help people become eligible.

If you think you may qualify, if you have questions about SSI or Medical Assistance, or if you need help with an SSI - related problem, you can contact the Benefit Specialist at the Commission on Aging, Arleen J. Elm at 869-2448.

Arleen is available to assist with understanding, and organizing your paperwork, status of claims, bills, and help you organize your own records and filing systems to prevent confusion.

SSI is a very important program for many older persons. In Brown County there are about 700 over age 65 who are receiving these benefits.

ONEIDA RESERVATION TOUR



Appleton Mayor Dorothy Johnson among the visitors on the Oneida Reservation Tour.

Approximately 150 Religious Leaders and Area Educators toured the Oneida Reservation Tuesday morning, February 4th.

The group was welcomed by the Oneida Business Committee Members, Tribal Administration and tour guides at the Norbert Hill Center. In a welcome address by Oneida Tribal Chairman Purcell Powless, he asked the audience to take note of the changes occurring on the Oneida Reservation and to also realize the Oneida Tribe is not all junk cars and welfare recipients regardless of what they've thought. "Its true," Powless said, "we have people in our Tribe who may be in this predicament as you have people in your communities in the same way." Powless also eluded to the land transactions of the Oendia Tribe over the past several years in regard to land purchase, sales, and transfer, legally and at times, although legal, it was devious dealings and about the Tribes decision to make the government accountable for their treaties. In light of the legal dealings the Tribe encounters, several outside groups fromed such as Equal Rights for Everyone, a group which promotes racist behavior and dissolution of Indian's treaty rights. In reference to these groups, Powless noted, there's no need to become hysterical about land issues, the Tribe is not out to take land back but is buying land back and many non-Indians are quite anxious to sell to the Oneida Tribe.

In conclusion, Powless humored the audience with a familiar Indian adage. "You people came here with the Bible and we had the land; now, you have the land, and we have the Bible."

With that thought in mind, Lloyd Powless introduced a slide show that has been developed by our Economic Development personnel in conjunction with our Public Relations Department. The fifteen minute slide show is a quick presentation of the Tribe's economic development in the past few years and also growth of the Tribal services in the community in regard to health, education, social services and enterprises.

Following the slide show presentation, Bill Gollnick from the Oneida Tribal School and Z. Ron Skenandore, Director of Higher Education, enlightened the audience of the growth in education within the Oneida Tribe. The audience then broke into six tour groups and was escorted by their tour guides throught the Oneida Tribal School, Day Care, Head Start programs. Each group then departed the Norbert Hill Center by bus for the balance of the reservation tour which included Oneida Health Center, Anna John Nursing Home, Museum, Red Stone Complex, and onto the reservation housing sites and Industrial Park and concluded with a look at Oneida Rodeway Inn and a brief walk through the Irene Moore Activity Center.

A luncheon was provided at the N.H.C. Cafeteria and a press conference scheduled with State Superintendent for Public Instruction, Herbert Grover, for the local media.

Billy Mills is Coming to Oneida, WI April 26-27, 1986



Billy Mills Winning the 1964 Tokyo Olympic 10,000 Meters Race

ENDORSED BY:

Fond du Lac Running Club
La Baie Striders
Shoreline Striders
Menominee Running Club
Oneida Running Club

CONTRIBUTORS:

Wigwam Mills
Hind
Tiger
Levi Strauss

SPONSORED BY:

Oneida Human Services
Support Group
Pepsi
McDonald's
Runner
Gamut
Fuji Film
Turtle Resources

Participate in the Running Clinic and/or 4K and 15K Road Races. Also: One Mile Non-Competitive Fun Run and Team Challenge Competition in 15K only.

At the 3rd Annual Oneida Tribal School Wolves Fun(d) Running Events

Running Clinic: Saturday, April 26th

Road Races: Sunday, April 27th

Also Scheduled To Appear: Roy Pirrung, Wisconsin State Record Holder in 24 Hour Run with 137 Miles — 5,268 Feet

4K and 15K Road Race Age Groups

15 and under, 16-25, 26-35, 36-45, 46-55, 56 and above.

Fundraiser incentive prizes and overall top fundraiser prizes for youth and adult category (proceeds will benefit Oneida Tribal School Runners).

Each entrant will receive: Free Pepsi, Free McDonald's Cheeseburger, Free Four Month Trial Subscription to the Runner

Each entrant will also receive a chance in the merchandise drawing sponsored by Tiger, Hind, Levi Strauss, the Gamut, the Runner, and Pepsi.

For more information/Entry forms, contact:
Dan Ninham, Oneida Tribal School, P.O. Box 365, Oneida, Wisconsin 54155
Phone: 414-869-2795

Oneida Tribal School Runners Merchandise/Cash Raffle

The Oneida Tribal School Runners will be having a merchandise/cash raffle which will benefit the 3rd Annual Oneida Tribal School Fun(d) Running Events which will be held on April 26th and 27th, 1986. The special guest for this event will be Billy Mills. The recent movie "Running Brave" is about the life story of Billy Mills and of his winning the 1964 Olympic 10,000 meter race.

The goal of this fundraising effort is to raise \$1,500.00. The main portion of the proceeds should come from our mailing listing of approximately 3,500 fitness enthusiasts. The Oneida Tribal School 75/25 raffle, which was held last fall, was a success in raising \$760.00. There was one prize for 25% of this total (\$190.00) which was won by Debbie House-Powless of Oneida. There are over 70 prizes which will be drawn for this raffle which are worth over \$800.00. There will also be a cash prize of 10% of the total money received. Special thanks to the contributors of this raffle: Oneida Bingo, Asics-Tiger, Hind, Jog-a-Lite, Frank Shorter Sportswear, Thor-Lo, Igloo, Star Products, The Runner, and The Gamut.

The cost per ticket is \$1.00 and there are also contributor incentive prizes:

Contribution Prize

- \$ 5.00 One pair of athletic socks plus
5 raffle chances
- \$10.00 4 month trial subscription to the
Runner magazine, one pair of
socks, and 10 chances

You may send your contribution(s) with your name, mailing address, and phone number on a 3" x 4" white piece of paper to: Dan Ninham, Oneida Tribal School, P.O. Box 365, Oneida, WI, 54155. Please make checks payable to: Oneida Tribal School Athletics. All contributors will receive a listing of the prize winners. You may win more than one prize. The drawing will be on or about April 11th. You do not need to be present to win. Your support will be graciously appreciated.

| Number of Prizes | Prize | Number of Prizes | Prize |
|------------------|-----------------------------|------------------|-------------------------------|
| 1 | 10% of total money received | 4 | Hind panel singlet |
| 8 | Oneida Bingo pass | 4 | Hind running shorts |
| 5 | Voit basketball | 1 | Sorbothane insole |
| 2 | Jog-a-Lite Cyclist Vest | 3 | Igloo 3-gallon cooler |
| 2 | Tiger running pants | 4 | Tiger Colorado running shorts |
| 2 | Frank Shorter scarf | 8 | Bottle of analgesic liniment |
| 2 | Frank Shorter stocking cap | 2 | Baseball caps |
| 24 | Thor-Lo athletic socks | | |



"ROSE"

Rose Skenandore Kerstetter, a native Oneida from Wisconsin, returned home this week to visit and to instigate some interest in traditional Iroquois pottery and corn husk dolls. Rose is the daughter of the late John and Lillie Archiquette Skenandore, both full blooded Oneida natives.

Rose was invited to the Oneida Tribal School where she hopes she has stirred the interest of some Oneida students to take the initiative to revitalize a traditional talent of the Oneida Tribe, to create pottery and sculpture. In her quick two day seminar in the Tribal School, Rose instructed approximately 20 upper grade students in Iroquois pottery. Each of the students shared in the native craft of pottery with Rose. The pots are now on display at the Oneida Tribal School.

During her short visit, Rose stayed with her sister Ceilia Adams and had the opportunity to share in the Traditional Midwinter Ceremonies of the longhouse, where she received her Oneida name, Tsista lale-, Shining Star.

Rose is a soft spoken, light hearted lady with a special talent for captivating her audience with her genuine interest and knowledge of Iroquois pottery and corn husk dolls. In her collection of Indian dolls from all Tribes (which numbers over 70), she maintains an ever growing collection of corn husk dolls. Her oldest and first corn husk doll was left to her by Esther Denny (Oneida), and is over 80 years old. An unusual feature of this particular pair of dolls is the fingers bound and tied individually.

In a prize winning traditional Iroquois dress, Rose displayed her pottery emphasizing the original Oneida designs. Several of her pieces include sculptured effigies combined with specific geometric designs which is well known of authentic Oneida pottery.

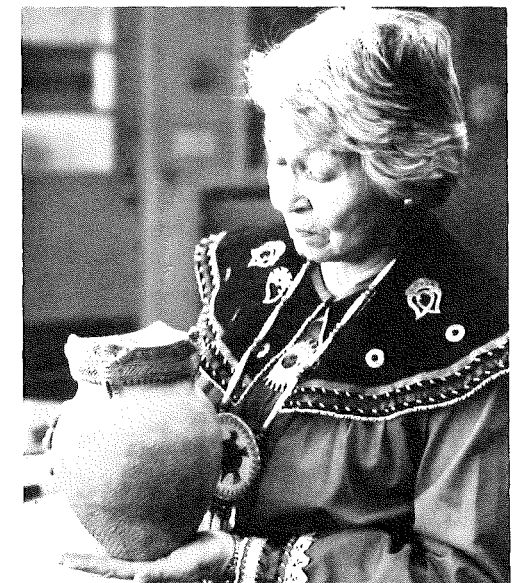
Several days are needed to complete these unique pieces of Indian pottery. Usually within a week, Rose is able to mold, sculpture, paint and give her pots two separate firings. After the first low temperature firing, she paints and sands her work to perfection for final firing at 2300 degrees overnight to finish the pottery.

Rose first became interested in pottery when she returned to New Mexico with her husband who helped her discover books on Iroquois culture. More specifically she found herself always looking at the various styles of clay pottery. She decided to try her hand at making her own pottery utilizing her traditional designs of the Oneidas. Her first attempts were poor, sagging lumpy pots. She enrolled in the Institute of American Indian Arts in Santa Fe and graduated in 1979, at the age of 60. Since that time, Rose has taken top awards at nationally acclaimed art museums and Indian art shows throughout the country.

Examples of Roses' work are currently on sale at the Irene Moore Activity Center Gift shop, Oneida, Wisconsin.



Rose with corn husk dolls from her lavish collection.



A Traditional Oneida pot made by Rose.

BABES

THE SUBSTANCE ABUSE PREVENTION PROGRAM FOR CHILDREN

WHAT IS BABES?

Beginning Alcohol and Addictions Basic Education Studies (BABES) is a primary prevention program designed to give children a lifetime of protection from substance abuse.

BABES accomplishes this by assisting young people to develop positive living skills and by providing them with accurate, non-judgmental information about the use and abuse of alcohol and other drugs.

This important information is presented in a manner designed to gain the attention of children and to cause them to develop a desire for healthful living and give them the ability to better understand how to protect themselves from alcohol and chemical dependency situations among their peers and within family structure.

WHAT DOES BABES DO?

The purpose of BABES is to—enable children to learn and practice living/loving skills and make positive early decisions about the use of alcohol and other drugs. BABES is a classic present-day application of affirmative life principles.

WHAT IS BABES "SECRET FORMULA"?

The secret power of BABES is a blending of actual child experiences told by participating youngsters in early sessions, PLUS the wisdom of recovering alcoholics who provided their highly attuned knowledge of aspects of personality and behavior incipient in addiction and the changes essential to recovery, PLUS the guidance of experienced educators.

IS CERTIFICATION REQUIRED?

YES—ONLY CERTIFIED TRAINERS (persons who train Presenters) and CERTIFIED PRESENTERS or TEACHERS (persons who present the BABES lesson material to children) are authorized by **BABES World Home** Executive Staff to perpetuate this program. Certified training is available in all localities.



Cathy Delgado - Trails Program Certified BABES teacher

WHO ARE THE CHARACTERS?

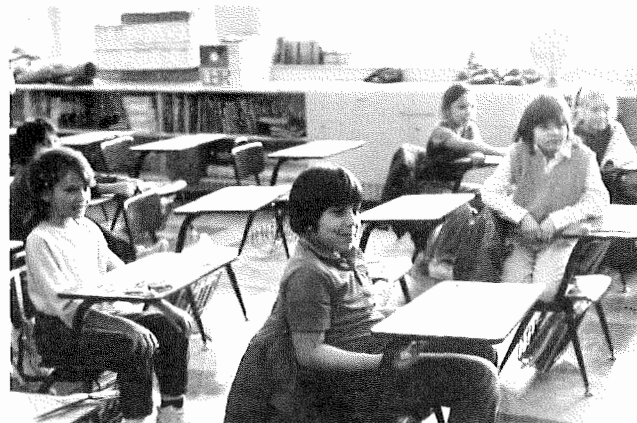
Delightful animal puppets are humanized to be like men, women, and children we all know (including ourselves when we self-observe).

- On January 23rd the AODA Prevention Program resumed in the Oneida Tribal School.

- The Oneida Tribal School Board approved the request for an AODA Prevention Curriculum, K - 8.

- The program is a cooperative effort sponsored through Oneida Chemical Dependency. Teachers are:

- Marlene Summers, Oneida Chemical Dependency
- Leland Danforth, Amerindian Center, AODA case management
- Sister Diane, Community Outreach and certified BABES teacher
- Cathy Delgado, TRAILS Program and certified BABES teacher



Oneida Tribal School Second Graders

New Hires for the Oneida Tribe

| Name: | Position: | Date Started: |
|------------------------|---------------------------------------|---------------|
| Barton, Lawrence E. | Oneida Tobacco Enterprise Manager | 12/2/85 |
| Bosshart, Nona | Nurses Aide | 11/20/85 |
| Brunette, Christina A. | Bingo Worker | 11/04/85 |
| Charles, Aurthor | Custodian-Norbert Hill Center | 1/27/86 |
| Cornelius, Debra | Nurses Aide | 11/10/85 |
| Cornelius, Kerry G. | Recreational Aide | 11/21/85 |
| Cottrell, Larry | Cook-Anna John Nursing Home | 1/10/86 |
| Dalke, Lois M. | Intake Warehouse Assistant | 1/13/86 |
| Dallas, Nadine | Bingo Worker | 11/26/85 |
| DeMarr, Elizabeth | Nurses Aide | 1/14/86 |
| Dodge, Gary | Public Relations Trainee | 1/6/86 |
| Elm, Kathleen | Nurses Aide | 11/20/85 |
| Funmaker, Diane | Bingo Worker | 11/4/85 |
| Heschler, Jerome A. | Controller | 1/20/86 |
| Hill, Renee M. | Bingo Worker | 11/4/85 |
| John, Yvonne | Laundry Aide | 11/18/85 |
| Johnson, Lois | Secretary to Administration | 12/23/85 |
| King, Margaret A. | Printers Trainee | 11/8/85 |
| King, Peter | Maintenance Supervisor | 11/26/85 |
| King, Sherri L. | AODA Specialist | 12/2/85 |
| King, Timothy | Cook-Norbert Hill Center | 12/29/85 |
| Kurowski, Jennifer | General Services Clerk | 1/6/86 |
| Lassila, Patricia | Bingo Worker | 11/4/85 |
| Lebert, Jeanne M. | Dental Hygenist | 12/30/85 |
| McLester, Patricia | Emergency Temporary Secretary | 1/15/86 |
| Metoxen, Linda | Bingo Worker | 11/4/85 |
| Metoxen, Lorena M. | Cook-Norbert Hill Center | 11/12/85 |
| Ness, Karen A. | Bingo Worker | 10/15/85 |
| Nicholas, Geraldine | File Clerk | 11/18/85 |
| Nohr, Pamela | Bingo Worker | 11/4/85 |
| Peters, Chantel S. | Nurses Aide | 1/14/86 |
| Powless, Gary B. | Bingo Kitchen Supervisor | 10/1/85 |
| Reed, Doreen | Bingo Worker | 10/15/85 |
| Rentmeester, Wilbert | Plant Manager-Buildings & Grounds | 11/12/85 |
| Schultz, Emiline | Bingo Worker | 10/15/85 |
| Schuyler, Rebecca E. | Recreational Aide | 12/2/85 |
| Skenandore, Francine | Secretary-Headstart | 1/7/86 |
| Stevens, Toni | Nurses Aide | 11/10/85 |
| Summers, Anderson | Attendant Sales Clerk-Oneida One Stop | 12/16/85 |
| Summers, Hartman | Bingo Worker | 12/5/85 |
| Thomas, Lonnie | Bingo Worker | 11/4/85 |
| Tolbert, Louise C. | School Age Health Educator | 1/15/86 |
| VandeHei, Regenia | Nurses Aide | 1/14/86 |
| Webster, Barbara | Kalihwi-saks Editor | 11/12/85 |
| Webster, Melvin | Printers Trainee | 11/8/85 |
| Zhuckkahosee, Corinne | Tour Guide | 12/2/85 |

We hope that they will have much success and challenge in working for the Oneida Tribe.

The Personnel Office

Kalihwisaks Interest Survey

The following Survey was designed to receive input from the Kalihwisaks Readers. The results will be evaluated to upgrade the paper and to better service the readers, and Oneida Tribe.

1. How often do you receive Kalihwisaks? _____
2. How often do you feel Kalihwisaks should be published? _____
3. Do you receive Kalihwisaks within two days of publication? _____
4. What do you enjoy most about reading Kalihwisaks? _____

Least? _____

5. What changes would you like to see in Kalihwisaks? _____

6. Would you be willing to subscribe to Kalihwisaks if you had to pay? _____
Why? _____

7. What is the first thing you look for in the paper? _____

8. I read Kalihwisaks mostly, _____ A few articles _____ Advertisements _____,

8. I usually don't read it _____.

9. Age Group (circle one) 7 to 15 16 to 25 26 to 35 36 to 50 51 - up

10. Do you feel people outside the Oneida Tribal Membership should be able to receive the Kalihwisaks if they are willing to pay a subscription price? _____

Why? _____

11. Other than for reading pleasure do you utilize the paper in any constructive manner? If so how? _____

12. How would you feel about a monthly calendar page in each monthly issue printed in the Oneida Language? _____

13. Would you like to see more articles that have been submitted by our local and national readers to include accomplishments and news from Oneidas all over? _____

14. Any other comments or suggestions to improve the Kalihwisaks? _____

You may sign you name or leave it blank. _____

Please return these surveys to:

Bobbi Webster, Editor KALIHWSAKS
P.O. Box 365, Oneida Tribe of Indians of Wisconsin
Oneida, Wisconsin 54155



I would like to thank everyone who sent me cards and gifts while I was in the hospital. Thank you, SUNSHINE \$ 8



If you can identify any of the people in this picture, please contact the Kalihwisaks office. This photo was found in the old Kalihwisaks files and there are no names or dates connected with the photo. For further information call Bobbi at 869-1260, ext. 118, 8 to 4:30.

\$12-\$15.00



Some people are over the Hill. Some people are almost over the Hill. Some people are a HILL! Happy Belated Birthday, Rick. \$ 8

Happy Daze

The Kalihwisaks will now be offering space for sale to publish photographs and congratulations, best wishes, etc. for various prices. The ads may be in the sizes as shown and there is also a price indicated for each as shown in the lower right corner of each ad. Photographs must be submitted to Kalihwisaks two days before the published deadline along with the typewritten message. Kalihwisaks cannot be held responsible if the photos are lost or damaged.



I'd like to wish this "Lady" good luck on her Federal Nursing Home Licensing exam. I hope you pass and then we'll work on finding you a job!! Good Luck, Linn. \$ 8

FOR FURTHER INFORMATION

CALL THE KALIHWSAKS OFFICE, 869-1260 EXT. 118

OR WRITE TO

KALIHWSAKS Happy Daze
P.O. Box 365
ONEIDA, WI 54155

"FROM THE ONEIDA HEALTH CENTER"

COUNTY RESCUE is the ONLY authorized emergency rescue service contracted to provide coverage to the Oneida Reservation. Their number is 469-9777. If any other rescue service is called, payment of this service will be the responsibility of the patient or person concerned.

Clip & post near phone

EMERGENCY UTILITY AND WATER SUPPLY failures after hours should be directed to 788-1991 OR 498-3182. PLEASE . . . DO NOT call these numbers if your septic system fails. These numbers are for water supply failure ONLY.

WE ARE HERE TO SERVE OUR COMMUNITY. Keeping note of the above numbers and information will enable us to continue serving you efficiently.

A.A. MEETINGS

Every Wednesday at 7:00 p.m. in the kitchen of the Oneida Health Center. Every Thursday at 8:00 p.m. at the United Amerindian Center Outpost, 403 Kellogg St., Green Bay.

ALAnon & AlAteen MEETINGS

Every Wednesday at 7:00 p.m. in the Conference Room of the Oneida Health Center.

A.A., ALAnon, ALAteen, COMBINED MEETINGS

Every Friday at 7:00 p.m. in the Conference Room of the Oneida Health Center. Open meetings on the last Friday of the month.

(The Conference Room of the Health Center is located in the lower level, on the north side of the building.)

EVERYONE WELCOME!

The Oneida Community Health Center would like to "revive" a loan closet for use of medical equipment by patients.

In order to do this, we will have to purchase those items most frequently needed. If you or someone you know has equipment to donate that will alleviate some of our costs, please contact the Health Center at 869-2711, extension 227, or bring your donation to Carol Smith's office at the Health Center.

We would like to start issuing equipment needs for patients by March. Please watch for a definite date - next issue.

VOLUNTEERS NEEDED

AODA Prevention/Treatment

The AODA (Alcohol & Other Drug Abuse) Prevention and Treatment Program for women is in need of volunteer help in the area of child care to assist women who are making an effort to make positive changes in their lives.

The Prevention/Treatment Program will be offering out-patient treatment to individuals on Monday, Wednesday and Friday mornings at the Oneida Health Center from 8:30-12:00 for four weeks. This program is designed to meet the needs of individuals whose use of alcohol and/or drugs has caused significant impairment in their lives. We have found, however, that some women who feel this program would be of some help to them will not be able to attend without the availability of volunteer child care.

In addition, child care services will be needed for women who wish to attend support group meetings of the Women-Reaching-Women chapter which will be held beginning in February. This group of women will be meeting one morning and one evening per week to encourage and support one another in a sincere effort to stay chemically free and create a positive lifestyle. We know from experience that some who need and desire to be a part of this group will not be able to get the support they need unless we can provide the needed child care.

If you feel you have some time to share and help others, as they try to help themselves, even on an occasional basis, please call the Chemical Dependency Program at 869-2711 and ask for SHERRY KING. Please leave your name and phone number with the secretary if I am not in, and I will return your call.

Thank you.



ONEIDA TRIBE OF INDIANS OF WISCONSIN POLICY FOR BOARD OR COMMISSION

1. Announcement in Kalihwi-saks.
2. Person(s) interested should complete application to include:
 - A. Reasons stating why they want to sit on the board/committee;
 - B. Possess some type of experience and/or expertise in a particular field.
3. Application submitted to Tribal Secretary.
4. After closing date, Tribal Secretary submits applications to Tribal Chairman.
5. Tribal Chairman then makes the appointments according to the existing Board/Commission By-Laws, Policies and ordinances.

Approved by the Business Committee on January 10, 1986.

★ Application form available from Tribal Secretary, N.H.C. - Room 6126.

Phone: 869-1260

TO: Oneida Business Committee
FROM: Purcell Powless

The following list of applicants I have listed below have been selected to serve on the Land Committee and Personnel Selection Committee.

There are many qualified applicants which makes selection difficult. It is my feeling that a change to involve new people is a constructive one. I hope that you will concur with these recommendations.

PERSONNEL SELECTION COMMITTEE

Allan Cornelius - Re-appointed
 Anna John - Re-appointed
 Joy Ninham - Re-appointed
 Amelia Cornelius - Re-appointed
 Barbara Webster - Re-appointed
 Herb Powless - Re-appointed
 Raeann Porter - New
 Linda M. Cornelius - New
 Pearl McLester - New
 Kathleen E. King - New
 Julie Barton - New
 Charlene Cornelius - New
 Debbie Powless - Re-appointed
 Dellora Cornelius - New
 Z. Ron Skenandore - Re-appointed
 Stan Webster - Re-appointed

LAND COMMITTEE

Lawrence (Guy) Danforth
 Edwin King, Sr.
 Herb Powless

Approved O.B.C. 1-28-86

NORBERT HILL CENTER ACTIVITIES — February 1986

| Sunday | Monday | Tuesday | Wednesday | Thursday | Friday | Saturday |
|---|---|--|--|---|---------------------------------------|---|
| | | | | | | OTS/Gym/9:30 a.m.-12:30 p.m. SANGER B. POWERS/ Gym/6-7 p.m. |
| SANGER B. POWERS/ Gym/6-7 p.m. | PERSONNEL/1175/8-4:30 ACCOUNTING/3200/8-4:30 DIET CLASS/4210/ Noon-1 p.m. AODA/4210/1-2:30 p.m. OTS/Gym/3-9 p.m. JOURNAL CLUB | N.E.W./Gym/3-5:30 p.m. EXERCISE/3200/4:30-5:30 p.m. BAY TOWN/Gym/6:30-9:30 p.m. | DIRECTOR'S MTG/4210/ 1:30-3 OTS/Gym/3-5 p.m. EXERCISE/3200/4:30-5:30 p.m. N.E.W./Gym/5:45-9:30 p.m. DOG CLUB/3200/6:30 p.m. | WOMEN'S SUPPORT GROUP - 4210/Noon-1 p.m. N.E.W./Gym/3-5:30 p.m. EXERCISE/3200/4:30-5:30 p.m. OTS/Gym/5:30-7:30 p.m. | RECREATION/Gym/ 5-10 p.m. | RECREATION/Gym/9 a.m.-6 p.m. SANGER B. POWERS/ Gym/6-7 p.m. |
| 2 | 3 | 4 | 5 | 6 | 7 | 8 |
| RECREATION/Gym/9 a.m.-6 p.m. SANGER B. POWERS/ Gym/6-7 p.m. | DIET CLASS/4210/Noon-1 p.m. OTS/Gym/3-5 p.m. EXERCISE/3200/4:30-5:30 p.m. | N.E.W./Gym/3-5:30 p.m. EXERCISE/3200/4:30-5:30 p.m. BAY TOWN/Gym/6:30-9:30 p.m. BLOOD PRESSURE SCREENING/9-11 a.m. | OTS/Gym/3-5 p.m. EXERCISE/3200/4:30-5:30 p.m. DOG CLUB/3200/6:30 p.m. Ash Wednesday Lincoln's Birthday | N.E.W./Gym/3-5:30 p.m. EXERCISE/3200/4:30-5:30 p.m. OTS/Gym/5:30-7:30 p.m. | DAY CARE BAKE SALE Valentine's Day | OTS/Gym/9-4:45 & 7:15-10 SANGER B. POWERS/ Gym/6-7 p.m. |
| 9 | 10 | 11 | 12 | 13 | 14 | 15 |
| OTS/Gym/9-4:45 & 7:15-10 SANGER B. POWERS/ Gym/6-7 p.m. | PERSONNEL/1113/10:30-4:30 DIET CLASS/4210/Noon-1 OTS/Gym/3-5 p.m. EXERCISE/3200/4:30-5:30 p.m. | N.E.W./Gym/3-5:30 p.m. EXERCISE/3200/4:30-5:30 p.m. BAY TOWN/Gym/6:30-9:30 p.m. | DIRECTOR'S MTG/4210/ 1:30-3 OTS/Gym/3-5 p.m. EXERCISE/3200/4:30-5:30 p.m. DOG CLUB/3200/6:30 p.m. | WOMEN'S SUPPORT GROUP - 4210/Noon-1 p.m. N.E.W./Gym/3-5:30 p.m. EXERCISE/3200/4:30-5:30 p.m. OTS/Gym/5:30-10 p.m. | OTS/Gym/5-10 p.m. | SANGER B. POWERS/ Gym/6-7 p.m. |
| 16 | 17 | 18 | 19 | 20 | 21 | 22 |
| ST. JOSEPH'S/Cafe/ 5:30-10:30 SANGER B. POWERS/ Gym/6-7 p.m. | DIET CLASS/4210/Noon-1 p.m. EXERCISE/3200/4:30-5:30 p.m. | EXERCISE/3200/4:30-5:30 p.m. BAY TOWN/Gym/6:30-9:30 p.m. CHEESE DISTRIBUTION 1175 & 1155/ 10-11 a.m. | EXERCISE/3200/4:30-5:30 p.m. DOG CLUB/3200/6:30 p.m. | MANAGER'S MTG/1175/ 1:30-3 BROWN COUNTY SENIOR HIGH SCHOOL TEEN INSTITUTE Dorm. 1155, 1175, 1185, & 3200 (Thurs. eve) | OTS/Gym/5-10:30 p.m. | Washington's Birthday |
| 23 | 24 | 25 | 26 | 27 | 28 | |

RECIPES

LENTILS ITALIANO

- 1 med. Onion, chopped
- 1 clove Garlic, minced
- 2 T. Oil
- 1½ c. dried Lentils, washed
- ½ t. crushed Red Pepper
- 1 t. Salt & Pepper
- 4 c. Water (omit if using beef-broth)
- 2 cubes vegetable or beef boullion, or 4 c. fat-skimmed beef broth
- ¼ t. dried crushed Basil
- ¼ t. dried crushed Oregano
- 1 16 oz. can Tomatoes
- 1 16 oz. can Tomato Paste
- 1 T. Vinegar
- 1 c. Water

Saute onion and garlic in oil for 5 minutes using a heavy 4-quart pot. Add lentils, red pepper, salt & pepper, boullion and water. Cover and simmer for 30 minutes.

Add remaining ingredients and simmer uncovered for about one hour. Stir occasionally. Serve as a bowl of beans or as a sauce over noodles or rice. Makes 8 servings.

(Extra servings may be frozen for later use)

BEAN SOUP

Soak overnight or by quick method:

- 2 c. Navy or marrow (pea) beans
- 2 Qts. Water

Add: 1 Ham bone, or several pork hocks
 1 Onion, chopped
 3 stalks Celery with leaves, chopped
 3 Carrots, sliced
 1 Qt. Tomato juice, or stewed tomatoes
 Salt and Pepper to taste

EXERCISE, continued

★Also **DIABETICS**, it's important you eat something before coming to class, and bring either juice or candy in case your sugar gets low while exercising.

SHAPEDOWN

Are you 12-20 years old and would like to lose weight, get in shape or feel better about your body? If so, SHAPEDOWN is for you. SHAPEDOWN is a 10-week course designed especially for adolescents. It's a fun way to learn to control the habits that control your weight. SHAPEDOWN is taught by a Registered Dietician and includes nutrition information, aerobic exercise to music and a workbook to help you change "FAT"-habits. Best of all, SHAPEDOWN is fun. Every session includes activities, food preparation and spare time for you to express your concerns. When does SHAPEDOWN start? As soon as five people sign up. The cost is \$10.00 and includes the \$10.00 workbook, snacks and supplies. Financial assistance is available. If you are interested, call Helen Brown, Nutritionist, at 869-2711. When at least five people are interested, the class will start.

★SPECIAL NOTE: Any cost in activities is strictly for the materials, foods and supplies needed for class. No profit is ever made. Financial arrangements can be made for those unable to pay the fee. In no way should cost restrict participation.

For more information on any of the nutrition courses, please call Nutritionist, Helen Brown, at the Health Center 869-2711.

REMINDER

WIC Group is MONDAY and TUESDAY of WIC check pickup. All WIC families MUST attend one WIC Group in a 6-month certification period.

MARCH WIC Group: March 3rd & 4th
 10:00 to 11:00 a.m.

TOPIC: Dental Health For
 Your Children And The
 Entire Family (Health
 Center Kitchen)

EVERYONE IN THE WHOLE WORLD IS WELCOME! EVERYONE IN THE WHOLE WORLD IS WELCOME!



VALENTINE'S DAY DANCE
FRIDAY, FEBRUARY 14, 1986
NORBERT HILL CENTER STUDY HALL
7:00 P.M. - 12:00 MIDNIGHT



7:00 P.M. - 8:00 P.M. Children's Hour - There will be stories, games, prizes, and entertainers for the children.

8:00 - 12:00 MIDNIGHT Entertainment will be provided by "Junction Express".
Surprise entertainers will perform for your enjoyment.

FREE ADMISSION - FREE REFRESHMENTS - DOOR PRIZES - FREE ADMISSION - FREE REFRESHMENTS
SPONSORED BY: HUMAN SERVICE SUPPORT GROUP

Also Head Start Raffle will be drawn that night
Krystal, (2) Space Stations, Baby Doll

**FREE
CHEESE, BUTTER
and
CHOICE of OTHER COMMODITIES**

**Application and Distribution
Norbert Hill Center — Oneida**

**** OUTAGAMIE COUNTY RESIDENTS ONLY ****

| HOUSEHOLD SIZE | 1 | 2 | 3 | 4 | 5 | 6 | 7 | 8 | 9 | 10 |
|---|---------|----------|----------|----------|----------|----------|----------|----------|----------|----------|
| CURRENT GROSS YEARLY INCOME LESS THAN: | \$7,875 | \$10,575 | \$13,275 | \$15,775 | \$18,675 | \$21,375 | \$24,075 | \$26,775 | \$29,475 | \$32,175 |
| CURRENT GROSS MONTHLY INCOME LESS THAN: | \$ 656 | \$ 881 | \$1,106 | \$1,331 | \$1,556 | \$1,781 | \$2,006 | \$2,231 | \$2,456 | \$2,681 |

Monday
February 24

10:00 A.M. — 11:00 A.M.
(if supply lasts)

PLEASE bring your own grocery bags!

APPLICANT must present DRIVER'S LICENSE, UTILITY BILL or ENVELOPE to verify residence.

Foster Care

To protect a child's roots is to protect his rights. His right to live and grow among people who fully understand him. His right to learn to respect his cultural heritage . . . and himself.

A child's own family is the best place for that to happen. But, sometimes there are problems that make foster care a necessary choice. Like physical and mental illness, chemical dependency, child abuse, neglect, desertion and sometimes children need foster care because of their own problems.

Foster care is not meant to be forever. A child usually continues to visit with his own family while in foster care. Our hope is that the family be reunited. We know its hard for foster parents to love a child and let him go. But, it helps to know that you protected that child's roots in his community.

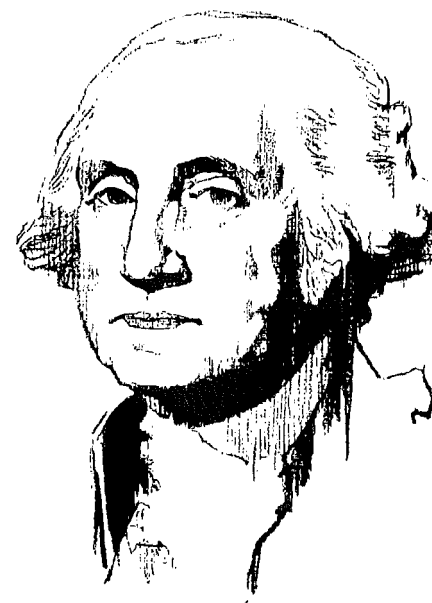
It takes money to raise children, as well as time, effort and caring. The foster child's food, clothing, medical, dental, and his share of the household expenses are all paid for. So you don't need a lot of money, just enough income for your own family. What you do need, is a lot of love, patience, and desire to help a child in need.

Because every foster family needs to have a license, you will be working with a social agency that licenses foster homes and places children. Foster homes are licensed to make sure that children have a place to stay.

If interested in becoming a licensed Indian foster home or want more information, please contact:

ONEIDA INDIAN CHILD WELFARE DEPT.
ONEIDA COMMUNITY HEALTH CENTER
P.O. BOX 365
ONEIDA, WI 54155
(414) 869-2711

or Your local County Dept. of Social Services



FETAL ALCOHOL SYNDROME A PREVENTABLE BIRTH DEFECT

If you are pregnant or contemplating a pregnancy some time in the future, there are some facts you should know about the effects of alcohol on your unborn baby. Approximately 3,000 babies are born each year in Wisconsin "AT RISK" because of their MOTHER'S DRINKING DURING PREGNANCY.

Babies born to drinking mothers may show a whole range of damage from low birth rate, short stature and mild learning and behavior problems to full Fetal Alcohol Syndrome. The full FAS includes significant growth deficiencies, multiple birth defects (including facial deformities), and severe mental retardation. For those children with FAS, the prognosis is not good ... they do not catch up. Brain damage may occur even when there are no other visible signs of FAS.

Alcohol is a powerful drug and when it is ingested by the mother, it enters the baby's blood stream in the same concentration as it does the mother's. Researchers at this time do not know what the dangerous level of alcohol is for a pregnant woman. The full FAS has been linked to heavy drinking which may be an average of six or more drinks per day. Other research, however, shows that even moderate drinking during pregnancy may increase the risks of miscarriage, low birth rate, unusual physical development, and lowered I.Q. Experts in the field recommend that if you are pregnant, limit your intake of alcohol, and PREFERABLY - DO NOT DRINK AT ALL. What you decide NOW can increase your baby's chance for a good start in life. FAS is a completely preventable birth defect. ONE THAT ONLY YOU CAN PREVENT.

FOR MORE INFORMATION, contact the Oneida Chemical Dependency Program at 869-2711 and ask for Sherry King!

TO THE ONEIDA COMMUNITY

The Miss Oneida Princess Committee thanks Sandra Ninham and her staff for supporting our Oneida Princess activities. The winners of the raffle on January 17th were:

| | |
|------------------------------|--------------------|
| 50/50 | Jennifer Hendricks |
| Quilt | Kathy Peterson |
| Beaded Cross Necklace | Michele Doxtator |
| Popcorn Machine | Shirley Baetam |
| Ann's World Gift Certificate | Debbie Kurowski |
| Ann's World Gift Certificate | Dodo Webster |

Our sincere appreciation to Ann Skenandore, Raeann Porter, Debbie and Kim Reiter, Pam Stevens, Diane Hill, Sandra Hill, Jo Skenandore, Paula King, Bill & Barb Doyan, Lois Dalke, Shirley Sherkley, Pete King, and many others.

Our apologies to community members who purchased tickets on the raffle. Due to Bingo policy, we could not use any tickets sold outside the Bingo hall. We are continuing the "Community" raffle until the February Pow Wow at our Civic Center. Norma is making another quilt, Nori is making another beaded cross necklace, and there will be several other prizes to win on our raffle. We will make this raffle better than the last one to show our appreciation for your understanding and support.

See you at the POW WOW!!!! February 15th - Oneida Civic. Tickets are available from Miss Oneida, Cathy Delgado, Jr. Miss Oneida, Jennifer Powless, Norma Powless, Nori Damrow and Charlene Cornelius.

CONGRATULATIONS

Airman Wayne D. Metoxen, son of Eugene W. Metoxen, 254 Florist Drive, De Pere, and Florence M. Hill, 934 Aliskwet Court, Oneida, has graduated from the U.S. Air Force pavement maintenance course at Sheppard Air Force Base, Texas. Metoxen is scheduled to serve with the 2849th Civil Engineering Squadron at Hill Air Force Base, Utah. He is a 1985 graduate of West De Pere High School.

GREEN BAY NEWS CHRONICLE

★★★★★★★★★★

Congratulations to Gina Funmaker who was named to the Dean's List at National College Kansas City, KS. We are proud of Gina's superior academic achievements and wish her continued success. In order to qualify for the Dean's List a student must earn a 3.7 grade point average and be registered full time. Gina maintains a 4.000 grade point average.

We miss you and love you, Gina; keep up the good work.

From Mom, Commanche, Sandia, and the rest of the Family.

★★★★★★★★★★ THANK YOU

I would like to thank all my friends and relatives who prayed for me, brought me gifts, flowers and cards during my recent stay at St. Vincent's Hospital. A special thank you to my precious husband whose support, presence and love was with me daily. I would also like to thank Howard & Luella Elm who took care of Nathan and Misty while I was in the hospital and who came to cook and clean after I got home. God Bless and keep both of you.

Carol L. Smith

JANUARY DEATHS IN ONEIDA COMMUNITY

Metoxen Tricia Ann, infant daughter of Lola Metoxen and Anthony Smith, 1308 Town Road, De Pere.

Metoxen Lambert, 86, Route 1, Oneida, WI preceded in death by wife Nancy (Powless) Metoxen.

Webster Cynthia, 95, EE Road, De Pere, WI mother of Robert Webster, preceded in death by husband Issac Webster.

★★★★★★★★★★ A JOB WELL DONE

This letter is to commend the quality and efficiency of the dental care given to your patients by Dr. Michael Lewitzke.

Dr. Lewitzke has demonstrated a high level of diagnostic and therapeutic skills. His technical work in operative dentistry and prosthetics is excellent.

Patients also indicate he is gentle and efficient in their care.

Sincerely,
Douglas F. Pierre, D.D.S.

TRIBUTE TO LAMBERT

When we learned your sad news our heart was with you. We know you are grateful that your father knew no protracted suffering and that he enjoyed long and full life. Some men ask for death in one way, some would prefer it in another. Lambert found death in the midst of the discharge of duties.

Also you have the comfort of knowing that the devotion shown him by you and his other children enriched his later years. Withal, the loss of a parent is a sad thing and hard to bear. We only wish we knew of some way to help you through this heartbreaking time. He was a loveable soul. We admired him and loved him. We feel a keen sense of loss in his passing. It is the deepest sorrow and grief that we conclude this tribute to Lambert Metoxen.

DODO CLUB

In loving memory of our mother, Mrs. Mary Hill, who died five years ago February 12, 1986. "It broke our hearts to lose you"

But you did not go alone
For part of us went with you
The day God called you home
God has you in his keeping
We have you in our hearts.

Sadly missed by her children,
James, Florence, Isabel,
Veronica, Sara.

Oneida Tribal School Boys and Girls Basketball Schedule

| <u>DATE</u> | <u>TEAMS</u> | <u>LOCATION</u> | <u>TIME</u> |
|-------------|--|----------------------------|--------------------------|
| Feb. 10 | 5th-6th Boys vs. Kennedy (Green Bay) | Oneida Tribal School Gym | 4:15 P.M. |
| Feb. 12 | 3rd Annual Oneida Tribal School Intersquad Game —Admission: \$1.00 for 3 chances at O.T.S. Basketball Raffle —Concessions will be on sale —Benefit: O.T.S. Team's Trip to Milwaukee Bucks Game | Oneida Tribal School Gym | 5:00 P.M. |
| Feb. 15 | 3rd Annual Oneida Tribal School Boys and Girls Basketball Tournament —Admission: \$1.00 for 3 chances at O.T.S. Basketball Raffle —Concessions will be on sale —Benefit: O.T.S. Team's Trip to Milwaukee Bucks Game | Oneida Tribal School Gym | 9:00 A.M. (Tentative) |
| Feb. 17 | 5th-8th Girls vs. Shawano (Sacred Ht.) | Sacred Ht. School, Shawano | 6:00 P.M. |
| Feb. 21-22 | 5th-6th Boys at Green Bay Boys Club Tournament | Green Bay Boys Club | Call for Time |
| Feb. 25 | O.T.S. Boys and Girls Basketball Teams to Milwaukee Bucks vs. Los Angeles Clippers Game | Milwaukee | Game time: 7:30 p.m. |

Oneida Tribal School Basketball Teams Raffle

3 Chances for \$1.00

To be raffled at O.T.S. Basketball Tournament on February 15th
You need not be present to win.

Benefit: O.T.S. Team's Trip to Milwaukee Bucks Game

Contact People: Coach Art Skenandore 869-2795, Coach Susan Ninham 869-1234

PRIZES

| # | ITEM |
|----|---|
| 2 | One pair of tickets to Milwaukee Bucks vs. L.A. Clippers Game in Milwaukee on February 25th |
| 2 | One Oneida Bingo Pass |
| 10 | One Pair of Athletic Tube Socks |
| 2 | Voit Basketball |

Oneida Mens Basketball League

1-27-86

| Team Standings | Won | Lost |
|--------------------|-----|------|
| 1. Scott Cottrell | 6 | 2 |
| 2. Al King | 6 | 2 |
| 3. Oneida Law | 5 | 3 |
| 4. Mike King | 4 | 4 |
| 5. Randy Cornelius | 4 | 4 |
| 6. Bunkhouse | 0 | 8 |

FIRE HAZARD FROM HEAT TAPES

Homeowners and mobile home residents who use electric heat tapes to prevent exposed water pipes from freezing should inspect tapes for possible fire hazard.

It is reported, that nationally, 500 house fires in the past seven years may have been caused by electric heat tapes. These are also often called pipe heating cables and consist of two wires enclosed in molded plastic insulation which emit heat due to the resistance of the conductive material to electrical current passing through the cable.

These tapes are commonly used in crawl spaces and in the substructures of homes and mobile homes, and are often energized after the first freezing temperatures. Some are thermostatically controlled and remain plugged in all year round.

Improper installation is a frequent cause of home fires. Lapping the tape over itself can result in a buildup in temperature and can result in a buildup in temperature and can possibly result in sufficient heat being generated to support ignition of materials in proximity of the tapes or of the materials used to construct the tapes themselves.

The following suggestions are offered to persons using these devices:

★ Inspect all heat tapes now or have a licensed electrician check for proper installation or deteriorated electrical installation. Refer to any installation instructions that accompanied the tape when purchased.

★ If you are purchasing new heat tapes or cables, know the diameter of the pipe you are protecting as well as the total length of pipe to be protected. Manufacturers normally suggest specific lengths of tape for certain pipe lengths and diameters. Match your needs to the heat tape you are buying.

★ Older heat tapes should be checked for cracks in the plastic insulation or bare wires; in such cases, replace the heat tape immediately.

★ Be aware, that not all heat tapes may be used with plastic pipe; check to make certain that the heat tape you are using is recommended specifically for the plastic pipe in question.

★ Manufacturers emphasize that heat tapes should NEVER be used over thermal insulation on a pipe, or near flammable objects. Inspect previously installed pipes to make certain these fire hazards do not exist in your home.

★ On the other side of the coin, make sure that the thermostat, on thermostatically controlled tapes, is located in the ambient air temperature you are trying to protect against. It's not unusual to find frozen pipes wrapped with heat tapes where the thermostat is located within a girding or under a porch or other shelter. In short, place the thermostat on the "cold" end of the pipe, or it may not turn on the current and fail to protect the pipe.

FOOTNOTE: This article was excerpted from the MECAP news, Vol. 10, No. 12, December, 1985. Also "Thanks" to Bill Ross, Asst. Director, EHP, O&M, for his valuable input on this subject.

"Oneida Health Board Openings"

The Oneida Health Board currently has three openings. Applications will be accepted by the Oneida Tribal Secretary up until 4:30 P.M., February 20, 1986. Application forms are available from Tribal Secretary, L. Gordon McLester, at the North Wing of the Norbert Hill Center, Room 6126. Monday - Friday 8:00 - 4:30 P.M.

ONEIDA COMMUNITY HEALTH ANNOUNCEMENT

Warm welcomes to Richard (Dick) Rosin, our new Chief Pharmacist. Pharmacy services will again be available beginning January 27, 1986.

CHANGES:

Patients who have insurance or M.A. will be required to bring their card when they pick up their prescriptions. If no card, you will be asked to return with it before your prescription will be given.

Pharmacy hours will be open from 8:30 A.M. to 5:00 P.M.

CLOSED: Wednesday, 8:30 A.M. to 1:00 P.M.

Noon hour, 12:00 to 1:00 P.M.

Fridays, 12:00 Noon to 2:00 P.M.

The hours will be strictly enforced.

The above measures are necessary to provide improved services to community members. Your cooperative efforts can bring about a decrease in waiting time for the patients.

Roberta Kinzhuma
Assistant Health Administrator

AA, ALANON, ALATEEN MEETINGS

Everyone's Friday Night Group (AA, Alanon, Alateen combined)

Place: Holy Apostles convent dining room

Time: 7:00 PM every Friday night

Note: OPEN MEETING EVERY FIRST FRIDAY OF THE MONTH

Hope for Tomorrow Alanon has also moved

Place: Green Community Building in Site II

Time: 6:30 PM every Tuesday night

Just for Today Alateen (age 12 to 18)

Place: Oneida Health Center Kitchen (go in back door)

Time: 6:30 PM every Monday night

AA closed meeting

Place: Oneida Health Center Kitchen

Time: 7:00 PM every Wednesday night

★ALSO EVERY THURSDAY, 8 pm United Amerindian Center Outpost, 430 Kellogg, Green Bay

ONEIDA MAN INJURED IN INDUSTRIAL ACCIDENT

George Melchert, Oneida was injured seriously while cleaning machinery at University Dressed Beef, Green Bay. At the time George was cleaning a machine another employee turned on the machine and the machine drew in George's hand which was severed except for a major artery and a few shreds of skin. While medics worked to preserve his hand he was transported to Milwaukee in the Flight of Life Helicopter.

George is now recuperating at Froedtert Hospital in Milwaukee, Wisconsin, where he will be for several weeks. If you would like to offer prayers of support or get well wishes you may do so by writing to:

George Melchert
Froedtert Hospital Rm. 4159
9200 W. Wisconsin Ave.
Milwaukee, WI 53226
or call 414-259-3000

NOTICE TOWN OF ONEIDA DOG OWNERS

Complaints have been received of dogs running at large and damaging property. Please take notice that Town Dog Ordinance No. 002 provides that dogs shall be confined to their owner's property and not allowed to run at large and that dogs running at large shall be seized and impounded.

Published by order of the Town Board
Marie Van De Bruggen, Clerk
Town of Oneida

ONEIDA BROWNIES

Congratulations to Oneida's Brownie Girl Scout Troop #42. Sixteen young Oneida Girls, all students of the Oneida Tribal School were invested into a branch of the Fox River Girl Scouts on January 28, at the Norbert Hill Center, while several of the girls parents and family members watched with pride.

The Investiture is a brief ceremony in which the girls all vow to uphold the Girl Scout Law and recite the Girl Scout Promise as they each light a candle. Concluding the ceremony they are presented with a Sash and Brownie pin.

After the ceremony was completed all joined in congratulating the new Brownies and shared in refreshments. Leaders for the Brownie Troop #42 are Julie Barton, Carol Robelia, and Sherry Mousseau.

Members of Brownie Troop #42 are Howie and Yosta Barton, Crystal House, Sunshine Webster, Josephine Skenandore, Tina Lopez, Sabrina Hill, Yako Webster, Renessa Bluebird, Christina Bluebird, Adriana Koffler, Melissa Mousseau, Grace Elijah, Shelbie Skenandore, Kathy Doxtator and Jennifer Berg.



ONEIDA BROWNIE TROOP #42



INVESTITURE CEREMONY N.H.C. ONEIDA

December 1985 Enrollments

| | | | |
|------------------------------|----------|--------------------------------|----------|
| ARCE, Joseph John | 9-25-80 | METOXEN, Celisha Sweetwind | 9-27-82 |
| ARCE, Michael | 9-1-76 | METOXEN, Chad David | 6-11-75 |
| ARCHIQUETTE, John Robert | 5-7-85 | METOXEN, Drew Lester | 6-21-85 |
| BAUMGART, Sheila Kaye | 1-28-68 | METOXEN, Marie Alanna | 9-3-77 |
| BELISLE, Jeffrey Wayne | 8-31-66 | METOXEN, Marissa Anne | 5-24-85 |
| BELISLE, Lisa Renee | 4-27-68 | METOXEN, Paul Michael | 12-13-81 |
| BENSON, Jennifer Lee | 5-25-73 | MILLER, Jonathan Wade | 10-18-73 |
| BOHN, Alexandra Nicole | 2-11-85 | MURPHY, Michael Eugene | 12-5-60 |
| BOHN, Richard Thomas | 2-11-85 | NICHOLAS, Carla Jean | 2-16-74 |
| BUNGE, Matthew Michael | 8-24-85 | NINHAM, Bobby Lee David | 7-15-82 |
| CANNON, Jerelyn Dawn | 6-4-63 | NINHAM, Capri Nickolei | 12-6-81 |
| CORNELIUS, Demeana La Terese | 3-17-80 | NINHAM, Cheyenne Lillian | 10-4-83 |
| CORNELIUS, Donna Theresa | 3-15-68 | NINHAM, Damon Victor | 2-26-77 |
| CORNELIUS, Michael James | 6-27-85 | NINHAM, Matthew Wayne | 9-5-83 |
| CORNELIUS, Randall Alan | 8-5-80 | PADRON, Consuelo | 10-31-62 |
| CORNELIUS, Yvette Evenina | 12-14-81 | PETERS, Jordan Joleen | 8-28-85 |
| DANFORTH, Cecelia Irene | 9-11-85 | POWLESS, Cheryl Elizabeth | 10-17-67 |
| DENNY, Kurt Allen | 10-1-70 | POWLESS, Winnona Christina | 11-3-82 |
| DOYEN, Edward Paul | 7-1-69 | PROCTER, Floyd Barry | 7-24-55 |
| DOYEN, William Paul Jr. | 7-3-70 | ROUSCH, Chester Field | 9-4-82 |
| DUCHARME, Samuel William | 7-29-84 | SCHULER, Anthony Ninham | 5-20-63 |
| ENGEBOB, Anthony Vincent | 3-18-85 | SKENANDORE, Danielle Marie | 4-7-85 |
| FLORES, Crystal Muriel | 5-5-84 | SKENANDORE, Lynn Marie | 1-15-83 |
| FLORES, David Lee | 4-10-81 | SKENANDORE, Ok-Wali | 6-1-78 |
| FLORES, Sacheen Linda | 10-29-79 | SKENANDORE, Zachariah Richard | 7-22-85 |
| FRANCO, Yvonne May | 8-28-72 | SMITH, Christian Tyler | 4-8-85 |
| GEREAU, Clinton Edward | 8-17-44 | SNELIUS, Charles Emerson | 1-3-69 |
| GERONDALE, Amanda Jean | 7-22-85 | SNELIUS, Morris Wayne | 2-7-67 |
| GRIFFITH, David Michael | 5-7-46 | SPENCER, Lynda Raye | 4-2-50 |
| HILL, Shawn Lee | 7-12-71 | SUMMERS, Alvin Frank | 11-10-66 |
| HOUSE, Bradley Reynold | 6-4-84 | SUMMERS, Curtiss Lee | 8-30-72 |
| HOUSE, Darren Leon | 7-24-72 | SUMMERS, Richard Roy | 7-2-65 |
| HOUSE, Elaine Dawn | 2-6-76 | THORSTENSON, Theresa Tekawitha | 8-5-82 |
| JORDAN, Christopher Lee | 4-24-72 | THORSTENSON, Wolfram Hawk | 3-12-81 |
| JORDAN, Darrick Paul | 3-14-77 | THORSTENSON, Yozina Lynn | 10-20-76 |
| KERNAN, Daniel Clyde | 8-18-42 | TROEMEL, Cynthia Marie | 11-11-70 |
| KINDNESS, Brian Keith | 7-3-62 | TROEMEL, Mark (NMN) | 6-10-73 |
| KINDNESS, Dale Robert | 9-12-58 | VANDER ZANDEN, David Paul | 7-12-63 |
| KINDNESS, Dean Alan | 11-20-66 | VANDER ZANDEN, George Wayne | 10-16-67 |
| KING, Sean Michael | 12-14-81 | VENTURA, Steve Evaristo | 7-29-83 |
| KUNSTMAN, Matthew Gerard | 6-21-71 | WAGNONE, Gerald Wayne | 2-10-65 |
| KUNSTMAN, Mary Beth | 9-13-73 | WEBSTER, Charise Mary | 7-6-81 |
| KUNSTMAN, Robert John | 2-11-64 | WILLIAMS, Anton Hawk | 5-13-78 |
| KUNSTMAN, Steven Richard | 4-22-62 | WILLIAMS, Forrest Galen | 3-13-77 |
| KUROWSKI, Daniel Nathon | 4-13-85 | | |
| LEMIEUX, Virginia Marie | 12-6-55 | | |
| MCLESTER, Dana Marie | 5-31-80 | | |
| MAURITZ, Rebecca Mary Mavin | 5-5-84 | | |
| MEHOJAH, Jack Robert | 8-24-64 | | |
| MEHOJAH, Kimberly Kay | 3-31-70 | | |
| MEHOJAH, Louis Edward | 4-16-66 | | |
| MELCHERT, Geraldine Lynn | 10-13-63 | | |
| MELCHERT, Jeremy Antone | 9-18-84 | | |
| MELCHERT, Marina Lynn | 4-16-84 | | |
| MENCHESKI, Nancy Ann | 2-5-72 | | |
| METOXEN, Brandon Scott | 8-5-83 | | |

Oneida Community Health Center

The Indian Health Service must now register all patients who receive medical, dental and Contract Health Services. This information is gathered and entered into an IHS computer located in Albuquerque, New Mexico for the purpose of maintaining an unduplicated file of all IHS/Tribal patients.

This information is used for: (a) health planning purposes; (b) provides a user-population profile; (c) third party billing information; and (d) provides current and updated basic demographic information.

Please complete this questionnaire and return to this office as soon as possible. This information is protected under the Privacy Act, as it becomes part of your Medical Record.

PLEASE COMPLETE ONE OF THESE FORMS FOR EACH MEMBER IN YOUR HOUSEHOLD WHO WILL BE REQUESTING CONTRACT HEALTH SERVICES NOW OR IN THE NEAR FUTURE.

PATIENT REGISTRATION QUESTIONNAIRE CONFIDENTIAL INFORMATION

| | | | | | |
|--------------------------|--|------------|----------|----------------------|------------------|
| Last Name, First, Middle | | Birthdate | | Birthplace | |
| Home Address | | | | Telephone No.: | |
| Social Security Number | | Tribe | Enrolled | | Degree of Indian |
| | | | Yes: No: | | Blood: |
| Father's Name | | Birthplace | | Mother's Maiden Name | |
| | | | | Birthplace | |
| | | | | Sex M F | |

THIRD PARTY ELIGIBILITY (ALTERNATE RESOURCE)

(This information pertains to above individual only)

| Type | Social Security/Medicaid or Policy Nbr | Dates of Eligibility |
|---------------------------|--|----------------------|
| Medicare A | _____ | _____ |
| Medicare B | _____ | _____ |
| Medicare Both A & B | _____ | _____ |
| Medical Assistance (WMAP) | _____ | _____ |
| RNIP — Medical Benefits | _____ | _____ |
| V.A. | _____ | _____ |
| Blue Cross Ins. | _____ | _____ |
| Other Health Ins. | _____ | _____ |
| Other | _____ | _____ |

If you have not filled this form out recently please do so it is extremely important for the following funding year.

University of Wisconsin-Stevens Point Scholarships For New Freshmen

The University of Wisconsin-Stevens Point will award about \$85,000 in scholarships to new freshmen entering the institution in the fall of 1986.

About 100 students will share the funds.

The money will be distributed to students who rank in the top 10 percent of their high school classes and have been active in organizations in their home communities and schools.

Students are given opportunities to compete for the scholarships after being accepted for attendance at the institution. Applications for the awards are sent to eligible students with letters which announce they are accepted for admission. Only those students applying before March 30, 1986 will be invited to compete for the awards.

There is an automatic award of \$100 to each high school valedictorian who applies.

Among the scholarships available will be 35 for \$500 apiece sponsored by the Alumni Association with money it collects in an annual fund drive. Twenty scholarships for \$200 apiece will be given from proceeds of an annual UW-SP Benefit Ball.

The Paper Science Foundation, with donations from related companies across the United States, will sponsor about 15 scholarships worth a total of \$2,000 during a four-year collegiate career.

Sixteen Elda Bark Walker Scholarships, in memory of a Wisconsin Rapids woman and patron of the arts at UW-SP, will be given in amounts of \$1,600 to cover more than a third of the total tuition and fees during four years of attendance on campus.

Other awards include two scholarships for \$500 apiece awarded by Marion Brazeau Fey of Wisconsin Rapids, an alumna; three for \$1,000 apiece provided by Melvin R. Laird, former U.S. Congressman from Marshfield and former U.S. Secretary of Defense.

There are numerous scholarships given directly by academic departments, including some not requiring students to be in the top 10 percent of their classes. Among these are music scholarships based on performing auditions.

In addition, nearly \$50,000 in additional funds will be awarded by the university and its foundation to continuing students during the academic year.

Inquiries about the scholarships may be forwarded by mail to Mrs. Karen Engelhard, Main Building, UW-Stevens Point, 54481. Her phone number is (715) 346-3811.

Information provided by the Univ. of Wis.-Stevens Point

University of Wisconsin-Platteville

Twenty-nine major buildings on campus are highlighted by a new fine arts center which features computerized lighting and laser systems and superior acoustics. A multi-million dollar addition to the engineering facilities will be completed soon. A Nautilus health and fitness center is located on campus. All majors emphasize practical experience as well as theoretical classroom training. For information on UW-Platteville call or write us at the Admissions Office, UW-Platteville, Brigham Hall, Platteville, WI 53818.

University of Wisconsin-Parkside Merit Scholarships For Incoming Students

Merit scholarships based on academic achievement are available to selected incoming students at the University of Wisconsin-Parkside. These scholarships, averaging about \$1000 per award, are intended for full-time students during their freshmen and sophomore years. The financial award or number of specific scholarships may vary in any given year from the figures listed below.

Application forms are available each year by January 1 at the UW-Parkside Information Center in the Campus Union, the Counseling Offices in the Wyllie Library-Learning Center, and, where noted, in other campus locations. Completed applications, unless otherwise noted, must be submitted to the UW-Parkside Office of Development and Alumni Affairs, Box No. 2000, 3322 Wyllie Library-Learning Center, Kenosha, WI 53141, Telephone (414) 553-2414.

UW-Parkside merit scholarships are in addition to many other scholarships based on academic achievement which are awarded by a number of private organizations in southeastern Wisconsin to outstanding students to attend college at Parkside and elsewhere. Information about those scholarships is best obtained from the high schools, libraries and the sponsoring organizations.

Following are merit scholarships available to incoming students through UW-Parkside:

UW-Parkside Alumni Association Merit Scholarships

6 at \$1000 each, payable in \$250 installments over 4 semesters. Criteria: academic achievement in high school or, for non-traditional age applicants, the potential for outstanding academic achievement.

William L. Lipman Memorial Merit Scholarship

1 at \$1000. Criteria: same as Alumni Merit Scholarships.

American State Bank Merit Scholarships

2 at \$1000 each. Criteria: same as Alumni Merit Scholarships, but must be permanent resident of Kenosha County.

George and Madeleine Molinaro Scholarships

2 for an academic year's tuition each. Criteria: academic achievement in high school by those desiring to be pre-medicine students. (Application forms are available at and may be submitted to the Division of Science, 344 Greenquist Hall.)

Alumni Association Loans

2 or more at \$1000 each. Criteria: same as Alumni Merit Scholarships; loan is forgiven if student obtains degree from UW-Parkside.

All material must be received by **March 15, 1986**. For more information and to receive an application contact: University of Wisconsin-Parkside, Development & Alumni Affairs, Wyllie Library/Learning Center, Room 3322, Box No. 2000, Kenosha, WI 53141, (414) 553-2414.

Information provided by the Univ. of Wis.-Parkside

- **Sometimes money is made available to particular majors or career areas within a university, college or technical school. Some examples might be Engineering Agriculture, Vocal Music, Journalism, Nursing, etc. Therefore contact and get information from the people both who work and teach in your area of interest.**

GED PROGRAM

1985 was the year in which the following people decided to return to school for a High School Equivalency Diploma. Not only did they decide to do it, they actually went and DID IT! We, their classmates, friends and families are proud of them. We also wish each of them success in their next goal whatever that may be.

CONGRATULATIONS 1985 GED GRADUATES

| | | | |
|----------------------|---------|--------------------|----------|
| JEFF THOMAS | 1-17-85 | PAULINE JOURDAN | 5-21-85 |
| ELIZABETH SKENANDORE | 2-5-85 | NINA JOHN | 6-20-85 |
| BART CORNELIUS | 2-13-85 | VERNON SMITH | 7-85 |
| FLORENCE JOHNS | 3-6-85 | SHELLY WHEELOCK | 7-18-85 |
| GROVER SMITH | 3-19-85 | TERRY METOXEN | 9-12-85 |
| KARL WEBSTER | 3-28-85 | DARYL METOXEN | 10-25-85 |
| DIXON SKENANDORE | 4-30-85 | MICHAEL SMITH | 10-30-85 |
| ROSE GREEN | 5-7-85 | BRIAN KINZHUMA | 11-5-85 |
| LOIS FRANKLIN | 5-8-85 | PAUL SKOLASKI | 11-7-85 |
| CAROL ELM | 5-9-85 | WARREN STEVENS | 11-26-85 |
| | | KENNETH SKENANDORE | 12-19-85 |

How about you and your future? Make 1986 the year you can get your GED. For more information you can contact THELMA MCLESTER or JULIE BARTON at 869-2343 or RICKI KEMPF at 869-2433. THEY DID IT, SO CAN YOU!

POSITIVE INDIAN DEVELOPMENT CENTER

The Positive Indian Development Center at 1183 W. Mason in Green Bay will be sponsoring a play entitled "Domestic Abuse is not an Indian Tradition." If you are interested in helping in any way, please call 494-2961 or 494-3834. We will be accepting items for a loan or donation for our plays to begin in March at the Norbert Hill Center throughout September.

We encourage any American Indian youth and adult to get involved. What is unique about the play is that we will be using the Oneida Language and a legend that is from the Oneida Nation in the traditional part of the play. Please help to support the Indian Community.

List of properties needed:

For Traditional Scene:

A Traditional scene (backdrop) or a hogan or long house
Traditional costumes for all
Family in first scene
Rugs & skins
Cradle board & doll
Bow & arrow
Dried corn etc. to hang
Eagle feather, cedar/sage
Flute

For Modern Scene:

A modern background of scant apartment
Sofa & chair
TV & Boom Box
Small kitchen chairs
Area rug
Phone
Clock
Lamp & end tables
Wastebaskets
Doll & blanket
Luggage
Extra decorative items for final scene

List of Characters:

In Traditional Scene:

Grandmother & Grandfather
Mother & Father
2 sons ages 12 & 9 years old
Daughter age 12 years old
Baby girl (we will use a doll)

In Modern Scene:

Grandfather
Mother & Father
Son age 12-13 years
Daughter 9 years old
2 friends of son both about 13 years old
2 policemen
D.A. Advocate
Baby (1 year old)

Stage Hands:

Backdrop artist
Set-up crew
Sound effects
Lighting
Make-up
Wardrobe
Curtain

FEBRUARY BIRTHDAY ANNOUNCEMENTS

Happy Birthday to Hordak, February 7
Love you much, Shera

Happy Birthday to Paul Elm, February 12
Love Mom

Happy Birthday to Bev King, February 23,
How old now?
Love from Donna & Kids

Happy Birthday to my daughter Crystal Ann Danforth who turned 4 February 2. I miss you!
Love Daddy

Happy Birthday to Yvonne Jordan, February 19
Tiger

Happy Birthday to Tyler Torres, February 2
Happy Birthday to Lorena Torres, February 6
Happy Birthday to Rick Torres, February 8
Happy Birthday to Alice Torres, February 13
Love Joanne, Joe, Melissa & Sonya

Happy Birthday to Wayne Snelius, February 7
The UNO cards are ready. Hope it's happy.
The Aliceas

Happy Birthday to Ellie, February 28th
From your sister Pogi

Happy Birthday to Barbara Mendoza, February 20
Gave by Dad & Mom

Happy 5th Birthday, T.J. Dessart, February 18
Love Mom & Dad

Happy Birthday to Lisa Moore, February 3
Gave by Grandpa & Grandma

Happy Birthday to our Mom & Grandmother February 14
Love Baby Sue, Ken & Diane

Happy Birthday to Warren "Squibly" Reiter February 25
From the FROG

Happy Birthday to Marlene Winters on February 28th
From You Know Who

Happy Birthday to Kathy Powless Gilsoul February 18
Love Mom & Dad

Happy Birthday to my big boy Kenton, February 1
Love Mom

Happy Birthday to Wenona Miller Big "10" on February 18
Love your family

BELATED BIRTHDAY ANNOUNCEMENTS

Happy Belated Birthday to Susan "Skin" Reiter From your family who likes chicken - January 12

Happy Belated Birthday to Kathleen King on January 21
From your family

Happy Belated Birthday to Bucko Reiter, January 5th. "Don't cry if we sing"
From your family

Happy Belated Birthday to Lenore Skenandore, January 21

Happy Belated Birthday to Michael Skenandore, January 31
Love Joanne, Joe, Melissa & Sonya

Happy Belated Birthday to Shantelle Metoxen Christjohn, January 5
GLC

Happy Belated Birthday to "Dad" Vince Skenandore, January 23
Love family

Happy Belated Birthday to Bonehead Susie Reiter, January 12
Guess Who?

Happy Belated Birthday to Tina Metoxen, January 10

Brand New Tribal Members

Congratulations to Steve and Sherry Stevens-Ladysmith, on the birth of their daughter "Maria Elizabeth", born January 25, 1986. She's named for her great grandmother Maria Hinton. Other grandparents are: Marj Stevens, Ernest L. Stevens Sr. & Lois Metoxen.

Gongratulations to Gary & Sharon House-Cornelius on the birth of their son, "Joslaga Gary", born January 15, 1986. The proud grandparents are Roy and Leone House and Dellora Cornelius. Joslaga means "Winter".

Engagement

Congratulations to Justine "Tiger" Skenandore and Robert Madrid on their engagement - Go for it! Free Chicken!

LOOKING FOR SCHOLARSHIPS?

The organizations listed below offer various awards to students meeting specific requirements. For more information, write directly to the organization. Please mention that you saw them in \$scholarship\$ Etc. Thank you.

Air Force ROTC/PA
Maxwell AFB, AL 36112-6663

Alcoa Foundation Scholarship Fund
Mellon Square
Pittsburgh, PA 15219

Alexander Graham Bell Association for the Deaf, Inc.
127 Volta Place N.W.
Washington, DC 20007

Alpha Kappa Alpha
5211 S. Greenwood Avenue
Chicago, IL 60615

American-Scandinavian Foundation
127 East 73rd Street
New York, NY 10021

American Association of Blood Banking
1117 N. 19th Street, #600
Arlington, VA 23314

American Association of Medical Assistants, Inc.
20 North Wacker Drive
Suite 1575
Chicago, IL 60606

American Congress on Surveying and Mapping
210 Little Falls Street
Falls Church, VA 22046

American Consulting Engineers Council
1015 15th Street, N.W.
Washington, DC 20005

American Council of the Blind
1211 Connecticut Ave., N.W.
Suite 506
Washington, DC 20036

American Dental Hygienists' Association
444 North Michigan Avenue
Suite 3400
Chicago, IL 60611

American Dietetic Association
430 North Michigan Ave.
Chicago, IL 60611

American Geological Institute
4220 King Street
Alexandria, VA 22302

American Indian Scholarships
335 Jefferson SE
Suite D
Albuquerque, NM 87108

American Institute of Architects
1735 New York Avenue N.W.
Washington, DC 20006

American Institute of Cooperation
1800 Massachusetts Ave., N.W.
Suite 508
Washington, DC 20036

American Library Association
50 East Huron Street
Chicago, IL 60611

American Medical Technologists
710 Higgins Road
Park Ridge, IL 60068

American Physiological Society
9650 Rockville Pike
Bethesda, MD 20014

American Society of Enologists
P.O. Box 411
Davis, CA 95617

American Society of Photogrammetry
210 Little Falls Street
Falls Church, VA 22046

AMVETS National Headquarters
4647 Forbes Boulevard
Lanham, MD 20706

Associated Western Universities, Inc.
142 East 200 South, Suite 200
Salt Lake City, UT 84111

Association for the Deaf, Inc.
3417 Volta Place NW
Washington, DC 20007

Association of Official Analytical Chemists
1111 North 19th Street
Suite 210
Arlington, VA 22209

Association of Surgical Technologists
Caller No. E
Littleton, CO 80120

B'nai B'rith Youth Organization
1640 Rhode Island Avenue, N.W.
Washington, DC 20036

Broadcast Education Association
1771 N. Street, N.W.
Washington, DC 20036

Broadcast Music Inc.
320 West 57th Street
New York, NY 10019

Business and Professional Women's Foundation
2012 Massachusetts Ave. NW
Washington, DC 20036

The Catholic Library Association
461 West Lancaster Avenue
Haverford, PA 19041

Civitan International Foundation
P.O. Box 2102
Birmingham, AL 35201

Daughters of the Cincinnati
122 East 58th Street
New York, NY 10022

Disabled American Veterans National Headquarters
P.O. Box 14301
Cincinnati, OH 45214

The Dog Writers Educational Trust
Kinney Hill Road
Washington Depot, CT 06794

The Dow Jones Newspaper Fund, Inc.
P.O. Box 300
Princeton, NJ 08540

Education Communications Scholarship Foundation
721 N. McKinley Road
Lake Forest, IL 60045

Entomology Society of America
4603 Calvert Road
College Park, MD 20740

Epilepsy Foundation of America
4351 Garden City Drive
Suite 406
Landover, MD 20785

Graphic Arts Technical Foundation National Scholarship Trust Fund
4615 Forbes Ave.
Pittsburgh, PA 15213

Graphic Communications International Union
1900 L Street, NW
Washington, DC 20036

Harry S. Truman Scholarship Foundation
712 Jackson Place, NW
Washington, DC 20006

International Ladies' Garment Workers' Union
1710 Broadway
New York, NY 10019

The Jeannette Rankin Foundation
P.O. Box 4045
Athens, GA 30605

Knights of Columbus
P.O. Drawer 1670
New Haven, CT 06507

Marine Corps Scholarship Foundation, Inc.
James Forrestal Campus
P.O. Box 3008
Princeton, NJ 08540

Minority Engineering Program
204 Rolla Building
University of Missouri-Rolla
Rolla, MO 65401

Miss America Pageant
1325 Boardwalk
Atlantic City, NJ 08401

Miss Teenage America Pageant Teen Magazine
8490 Sunset Boulevard
Los Angeles, CA 90069

Muscular Dystrophy Association Research Department
810 Seventh Ave.
New York, NY 10019

National Association for the Advancement of Colored People
186 Remsen Street
Brooklyn, NY 11201

National Association of Bank Women
Suite 1400
500 North Michigan Ave.
Chicago, IL 60611

National Association of Plumbing-Heating-Cooling Contractors
P.O. Box 6808
Falls Church, VA 22046

The National Council on the Aging, Inc.
600 Maryland Ave., S.W.
West Wing 100
Washington, DC 20024

National Federation of the Blind
1005 Nebraska Street
Sioux City, IA 51105

National Society of Professional Engineers
1420 King Street
Alexandria, VA 22314

National Society of Public Accountants
1010 North Fairfax St.
Alexandria, VA 22314

Naval Medical Command
Code 554
Department of the Navy
Washington, DC 20372

NFBA Education Foundation
The NFBA Building
1010 Massachusetts Ave., NW
Washington, DC 20001

Nurses' Educational Funds, Inc.
555 West 57th Street
New York, NY 10019

Portuguese Continental Union
899 Boylston Street
Boston, MA 02115

The Poynter Fund
Personnel Department
Times Publishing Company
P.O. Box 1121
St. Petersburg, FL 33731

Presbyterian Church (U.S.A.)
The Vocation Agency
475 Riverside Drive, Room 430
New York, NY 10115

Red River Valley Association
8512 Tamarac Lane
Wichita, KS 67206

The Refractories Institute
301 Fifth Avenue
Suite 1517
Pittsburgh, PA 15222

Scholastic Awards
730 Broadway
New York, NY 10003

Society of Women Engineers
United Engineering Center, Rm. 305
345 East 47th Street
New York, NY 10017

Soil Conservation Society
7515 Ankeny Road
Ankeny, IA 50021

Soroptimists International of the Americas, Inc.
1616 Walnut Street
Philadelphia, PA 19103

Transportation Clubs International
1040 Woodcock Road
Orlando, FL 32803

United States Jaycees
Jaycee War Memorial Fund
P.O. Box 7
Tulsa, OK 74121-0007

Vertical Flight Foundation
217 North Washington St.
Alexandria, VA 22314

V.F.W. National Headquarters
Broadway at 34th Street
Kansas City, MO 64111

Washington Crossing Foundation
P.O. Box 1976
Washington Crossing, PA 18977

• Most colleges have openings and are eager to accept students who are ready to benefit from college level instruction. Most require some evidence of accomplishment and seriousness of purpose. Grades are one of proving yourself.

• This paper lists many examples of financial aid opportunities. There are thousands of others. Action: Research other sources: Libraries, Guidance Offices, Write to schools that interest you.

HIGHER EDUCATION ANNOUNCEMENTS

A note to thank all the students for the grade reports that were turned in. We were very pleased to see everyone trying so hard and doing so well. For those who haven't remembered, it's a requirement of the Education programs, that our office receive a copy of your grades at the end of the semester/quarter and an official grade report at the end of the school year.

For anyone interested or students planning to continue in the Vocational or Higher Education program, you can now start to complete the 1986-87 Financial Aid Form. You can obtain this form from your school or our office. Also, the Oneida Scholarship Application is to be completed for each year you plan on attending school; priority date April 1st.

If you have any questions in regards to any of the above information or need assistance feel free to contact our office.

Oneida Education & Job Training Office
P.O. Box 365
Oneida, WI 54155
(414) 869-2173

ANNOUNCING

THE 1986 HEADLANDS INDIAN HEALTH CAREERS PROGRAM: JUNE 13 - AUGUST 9

An eight-week summer program designed to increase the science and mathematics backgrounds and communication skills of **Native American** students, presently in their **senior year of high school or freshman year of college**, interested in a **health career**. Applicants should have completed at least two years of algebra and two science courses and maintained a 2.50 GPA (B-average). This academic enrichment and reinforcement program consists of mini-block courses in biology, chemistry, physics, mathematics, and communication skills and is designed to increase the students' backgrounds and skills so they may achieve levels of performance necessary for health professional schools. The program also informs students of the variety of health careers and of the need for Native American health professionals. Participants receive: (1) **All expenses paid** — including transportation, tuition, room and board; (2) **\$300 stipend**; (3) **4 semester credits**.

Teaching Assistant/Dorm Counselor/Advanced Placement Students (TADCAPS) positions are also available for **Native American** students majoring in a **health related career** presently in their **junior or senior year of college or graduate school**. TADCAPS serve as dorm counselors and tutors, assist in labs, and attend advanced classes (seminars and tutorials). Instructors prepare special readings and discussion topics for them and meet with them in tutorial sessions. In addition to all expenses being paid, a \$1,600 stipend is also granted to each TADCAP.

WARNING: This is not a summer camp — it is an intensive and rigorous academic program. If you are expecting an easy summer or a vacation in Northern Michigan — you will be rudely disappointed.

For more information detach the card below and fill in the reverse side. This card should reach us by 1 March 1986 in order to accommodate processing and the application deadline. **There are no exceptions to the application deadline of 15 March 1986.** You may also request information by calling 405-271-2250.

Information for application in Education Office, NHC, 869-2111.

NEW RULES FOR ONEIDA CIVIC CENTER

I would like to inform all the readers of our paper that you may start to see articles written about drug and alcohol abuse submitted by our youth that have been using our facilities.

I am going to try something on our youth who think that they can come to our center after drinking or using drugs.

In the past we've had it where the youth who are caught are suspended for one week. The second time it happened we suspended them until they took 8 hours of counseling.

We are starting to get a few again that are testing us and trying to get away with something, but I have since revised our suspension requirements. Here is what will happen now if a youth is caught using or after having used drugs or alcohol and they come onto the grounds or into the building.

First offense; they will be sent home immediately on the van. Just as soon as I can, I will notify one of the parents. The youth will then be suspended for two (2) weeks from the building and the grounds. They will not be allowed to participate in any of our activities.

The second offense will be; eviction from the building for one month. They will be required to be here at 8:30 on Saturday morning and I will have movies here that they will have to view in a room by themselves. I will then require them to write an essay on the film. This will then be typed and sent to the Kalihwisaks with the youths name attached for publication in the paper. There will be a series of two or three films that they will have to do this on. The fourth week they will have to write an essay on why they were drinking or using drugs. This one will have their name, age, and address on, plus it will tell who their parents are. They will not be allowed back in until this is completed, so if they refuse to do this they will never be allowed here or at any of our activities. If it becomes necessary we will pursue a court order barring them from here so that whenever they come by, the police can pick them up for a violation of a court order.

This may sound harsh to some people but look at our side of this. Some days we have had as many as 163 in the building. We have had trouble with the same ones. We only have had to suspend 5 in the past year for this offense of coming here after drinking.

Based upon our highest turnout this is only 3% of troublemakers.

Let's get on and praise these other 97%; they come here, use the facilities, and never or hardly ever give us any trouble. If it were not for these youth our jobs would be unbearable.

So from now on if you see letters discussing drug and alcohol abuse or on opinions of the films you will know that these youth have gotten themselves into trouble with our department.

Sincerely Submitted,
Cliff Webster, Recreation Director