

\* \* \* \*

W.I.C. (Women, Infant, Children Supplemental Food Program)

Our WIC mugs say, "WIC WORKS", and that certainly is true. Researchers have proven that WIC mothers have less anemia (low iron in blood), fewer premature babies, and less complications during pregnancy. WIC infants and children also enjoy better health due to WIC.

Besides the special WIC foods, a great deal of WIC's success is related to the nutrition education that WIC participants receive.

To improve our program's effectiveness and outcome, we will begin nutrition education sessions each month. All check issuance will take place the first two days of each WIC week. Certifications will continue as usual, as will check issuance in Green Bay at the Amerindian Center. The check pick-up dates and times for February are as follows:

ONEIDA COMMUNITY HEALTH CENTER:

Monday, Feb. 6, 1984  
10:00-12:00 noon  
3:00-5:00 p.m.

OUTPOST, GREEN BAY:

Tuesday, Feb. 7, 1984  
9:00 a.m. - 4:00 p.m.

\* \* \* \*

THE PHYSICIAN ASSISTANT

Many physicians facing the increased need for medical services are utilizing physician assistants. A physician assistant (referred to as a P.A.) is a skilled health professional qualified by academic and clinical experience to provide patient care under the supervision and direction of a licensed physician. In this way the services of your doctor are extended and medical care can be provided to more patients. As a direct extension of the physician, the P.A. can evaluate patient problems which allows the physician to focus on more urgent or complex patients.

The physician-P.A. team is unique in that the physician delegates duties and is legally responsible for the P.A.'s medical action. It is important to note that the

physician is always available for consultation if you or the P.A. deem it necessary.

P.A. duties are many and include obtaining a medical history, performing a physical exam, assisting in surgery, making rounds in the hospital with the physician, performing diagnostic procedures and therapy.

P.A.'s are certified nationally through rigid testing and by the State Medical Examining Board. They must maintain certification through continuing medical education.

The physician assistant is not a replacement for your physician but is to provide you with the best possible medical care under the direction of your physician.

If you have further questions, please ask your doctor or physician assistant.

The Oneida Community Health Center is pleased to have Mr. Robert Morris, Physician Assistant working with Dr. Craig and Dr. Wood.

\* \* \* \* \*

Here are the answers to the Nosy Neighbors puzzle:

1. Jimmy Durante
2. Pinocchio
3. Miss Piggy
4. Sammy Davis, Jr.
5. Henry Kissinger
6. Richard Nixon
7. Kilroy
8. W. C. Fields
9. The Tin Man
10. Barbra Streisand
11. Bob Hope
12. Dick Tracy



Kalihwisaks is distributed monthly. It is free to all Oneida Enrolled Tribal Members. If you know of someone who is not receiving the Kalihwisaks please have them send their name and address as they are listed on the Oneida Rolls to P.O. Box 365 Oneida, WI 54155 or call 414-869-2083.

THANK YOU  
KALIHWISAKS STAFF



February Issue  
Volume 21

# KALIHWI-SAKS

PRONOUNCED: GAH-LEE-WHEE-ZOCKS  
 MEANING: SHE LOOKS FOR NEWS

P. O. Box 365  
 Oneida, WI 54155  
 414-869-2083

KALIHWI-SAKS is the official publication of the Oneida Tribe of Indians of Wisconsin and is printed bi-weekly. The beginning of the month is local (Oneida, DePere, Green Bay and Seymour) and the end of the month is a monthly issue which is distributed to all tribal members.

### STAFF

GRACE KOEHLER	COORDINATOR
HILDA ALICEA	SECRETARY
KENNETH DENNISON	MACHINE OPERATOR
CARLA REITER	OFFICE HELPER
MELVIN WEBSTER	OFFICE HELPER

### SHAKLEE PRODUCTS

Products in harmony with nature. Personal care, cleaning, and vitamins.

Call: Lloyd or Sharon Powless  
 869-2744

### WANTED TO BUY: OLD U.S. COINS

Will buy individual coins or collections.

For more information, call James E. White at 869-2226

### CONVENIENCE CORNERS

1920 Freedom Road

Groceries---Gas---Laundromat  
 CALL 869-2709

### CASSETTE TAPES ONEIDA LANGUAGE LESSONS \$6.00

Cassette tapes are available at the Oneida Language Office, Sacred Heart Center, room 4316, 869-2274. The office also has taped stories and other materials which have appeared in the KALIHWI-SAKS.

ALSO: BEAR BOOK - a \$12.00 collection of bear stories from Oneida's during WPA project in 1939.

### ONEIDA ONE STOP

OPEN: Monday - Saturday  
 6:00 a.m. - 10:00 p.m.  
 Sunday  
 7:00 a.m. - 10:00 p.m.

GAS----GROCERIES----AUTO REPAIR

CALL 869-1030

### ONEIDA TOBACCO ENTERPRISE

Oneida . . . . . 869-2702  
 Green Bay . . . . . 497-2242  
 Freedom Road, . . . . . 869-2468

### "CHIEFS"

Floyd and Loretta Metoxen, OWNERS  
 869-2974

### ONEIDA TRADING POST

CRAFT SUPPLIES AND FINISHED PRODUCTS

Nori Damrow By appointment  
 Sharon Powless 869-2744

### \*\*WELDING\*\*

Will do any type of welding  
 Call J&R WELDING  
 869-2915

### LAMAZE CLASSES . . .

The Oneida Community Health Center and the Childbirth Education Association are offering a seven week series of Lamaze Classes in prepared childbirth beginning Tuesday evening, January 17th. Classes will be held weekly through February 21st, at the Oneida Community Health Center. Lamaze Classes are designed to teach breathing techniques and exercises to better prepare expectant parents for the childbirth experience.

If you are pregnant and at approximately nine weeks before your due date, you are invited to register. A "coach", husband-friend-or relative, should accompany you. Cost of the series of classes is \$25.00 per couple, but will be adjusted according to what you can afford.

For information and registration please contact the Community Health Nursing Office at 869-2711, ext. 248, or the Childbirth Education Association at 499-9095.

\* \* \* \*

### PHARMACY & YOUR HEALTH

#### A WINTER HAZARD . . .

Those living in the so-called Sunbelt States miss some of the joys and hazards of the winter season. For the rest of North America, December through March usually provide ice, snow, and cold, windy weather. For the elderly---especially those over age 75---winter provides a special hazard, *accidental hypothermia*. This condition may occur when the body temperature drops below 95 degrees F. If not treated promptly, death can be the outcome.

Hypothermia - low body temperature - is often overlooked or confused with other health problems. Common symptoms include generalized confusion, a bloated face, trembling on one side of the body, slurred speech, and drowsiness. With continued fall in body temperature, one may become delirious and lapse into coma.

### PHARMACY & YOUR HEALTH, Continued

Hypothermia has been known to occur when cold weather is combined with head injuries, certain disease states, and even the use of certain drugs (including alcohol and some tranquilizers). To help prevent accidental hypotemia, one should dress in multiple layers of clothing to insulate the body and trap warm air around the body. One should also avoid getting wet (which causes more heat loss than when the body is dry).

\* \* \* \* \*

\*\*\*\*\*  
 \*\*\*\*\*  
 \* UNTIL FURTHER NOTICE . . . \*  
 \* Kathy King or Bob Arneson will be \*  
 \* the contact person for Indian Child \*  
 \* Welfare and Family Services \*  
 \* respectively. Please feel free to \*  
 \* contact them at the Health Center, \*  
 \* 869-2711. \*  
 \* Your tolerance to our temporary \*  
 \* shortage of staff is greatly appre- \*  
 \* ciated. \*  
 \*\*\*\*\*

\*\*\*\*\*  
 \*\*\*\*\*  
 \* MARLENE SUMMERS...is temporarily \*  
 \* filling-in in Chemical Dependency and \*  
 \* has been doing an excellent job there \*  
 \* and at the Oneida Tribal School. \*  
 \* THANKS, Marlene, for being there! \*  
 \*\*\*\*\*

The added construction of our building is coming along as expected, but your continued consideration is still needed; the results will be better service!

All things are circular . . .  
Our lives, families, bands and tribes.  
In recovery, I will become a link in a circle of support  
enabling me to give and receive.

The stronger the circle, the smaller chance that I  
will return to drinking or using drugs.

Sharon Day-Garcia

# Children of addicts need a special kind of help



—Journal photo

The experts call it 'chemical dependency.' The kids call it 'lonely.'

## ANN'S WORLD OF INDIAN ARTIFACTS

OPEN TUESDAY-SATURDAY 10 - 6

Closed every Sunday & Monday

ANN FEATURES A COMPLETE LINE OF  
TURQUOISE, PENDLETON BLANKETS,  
BASKETS, DOLLS, LEATHER GOODS,  
INDIAN GREETING CARDS, RUGS,  
NOVELTY ITEMS, AND MUCH MORE.

(COMPLETE SILVER REPAIRING)  
WILD RICE 6.95 LB.,  
INDIAN CORN 1.25 QT.

14 KT. GOLD MEN & WOMEN RINGS, CHAINS,  
CHARMS, & EARRINGS.

HWY 29 4 MILES WEST OF ST. MARYS  
HOSPITAL WATCH FOR TEEPEE FRAME.

SENIOR CITIZENS      CHARGE IT !!!  
10%                      LAY - AWAYS!!  
DISCOUNT

*Ann Skenandore*

\*ANN IS BUYING\*

Oneida made baskets and some bead work  
See me on Mondays. Hwy 29 4 miles West  
of St. Marys Hospital.  
WATCH FOR TEEPEE FRAME.

JOIN THE FUN AT:  
**Chiefs**

SPECIAL! \$2.00 Pitchers,  
Tuesday & Thursday nights  
starting at 6:00 p.m.

OPEN TUESDAY - SUNDAY  
CLOSED MONDAYS

HALL FOR RENT: CALL 869-2974.

Floyd & Loretta Metoxen  
Proprietors.

**PRO-SWEEP**  
*& Chimney Cleaners*

497-9112  
Green Bay  
Steve

Now's the time to have your  
Chimney cleaned for Next Year.  
We'll clean it, check it and  
let you know if anything else  
needs fixin.  
(REMEMBER PROTECT YOUR YOUR  
LARGEST INVESTMENT "YOUR  
HOME").

SWEEPS LUCK,  
PRO SWEEP

REPAIR WORK

ELECTRICAL CONTACT  
PLUMBING LEROY KING  
869-2426 or 869-2670  
CARPENTRY

SUMMERS JEWELRY SALE

The jewelry I sell is made by the brands of the Navajo & Zuni. I get my jewelry wholesale, which means I can have lower prices and save you money. Call or stop by and look at my catalog.

1861 Poplar Lane 833-7502  
Seymour, WI 54156

OLD U.S. COINS  
WILL BUY INDIVIDUAL COINS OR  
COLLECTIONS. FOR MORE INFORMATION  
CALL JAMES WHITE 869-2226

PROFESSIONAL  
INDEPENDENT  
DRAFTING  
SERVICE



Any Amount of Drafting -  
From Redraws to New Drawings  
Any Type - From Industrial  
To Residential

JANM. THOMPSON  
824 Smith  
GREEN BAY, WI 54302  
(414) 432-4493

Top Quality Work Done At A Reasonable Price

Gary G. Metoxen  
District Agent

The Prudential  
Insurance Company  
of America

891 Anderson Drive  
Green Bay, WI 54304  
Office - 414-499-3100  
Res 414-869-1075

*Prudential*

\*PHOTOGRAPHY\*

Weddings - Anniversary - Family  
portraits - Graduation pictures  
Contact: Mike King  
832 15th Ave.  
Green Bay, WI  
498-0120  
VERY REASONABLE!!!!!!!

UPHOLSTERY

Cecil Jordan, Bruce Jordan, Ray  
Jordan  
732 S. Baird  
Green Bay, WI  
432-4238  
FREE ESTIMATE - QUALITY WORKMANSHIP  
FAIR PRICES!

THRIFT N' GIFT HOUSE

Off E on S. County Line Rd. Open  
12 - 5 Tuesday - Saturday or by  
appointment.

Dresser w/mirror Ice skates  
Dining room set Snowmobile suits  
1 Sloppy Jo chair Old Singer sewing  
Antique rocker machine  
1 Tricycle 1 - 2 wheeler with  
White corn training wheels

67 Buick Skylark - \$150

RUTH SKENANDORE  
869-2171

*The Thrift N' Gift House*

LOCATED ON S. CTY LINE ROAD BETWEEN  
ADAM DRIVE & G IN WEST DEPERE  
OPEN 12-5 TUESDAY THRU SATURDAY  
OR BY APPOINTMENT

RUTH SKENANDORE (414) 869-2171

TWELVE THINGS TO DO IF YOUR LOVED ONE IS AN ALCOHOLIC

1. Don't regard this as a family disgrace. Recovery from alcoholism can come about as in any other illness.
2. Don't nag, preach or lecture to the alcoholic. Chances are he has already told himself everything you can tell him. He will take just so much and shut out the rest. You may only increase his needs to lie or force him to make promises he cannot possibly keep.
3. Guard against the "holier-than-thou" or martyr-like attitude. It is possible to create this impression without saying a word. An alcoholic's sensitivity is such that he judges other people's attitudes toward him more by small things than outspoken words.
4. Don't use the "if you loved me" appeal. Since the alcoholic's drinking is compulsive and cannot be controlled by willpower, this approach only increases his guilt. It is like saying, "If you loved me, you would not have tuberculosis."
5. Avoid any threat unless you think it through carefully and definitely intend to carry it out. There may be times, of course, when a specific action is necessary to protect children. Idle threats only make the alcoholic feel you don't mean what you say.
6. Don't hide the liquor or dispose of it. Usually this only pushes the alcoholic into a state of desperation. In the end, he will simply find new ways of getting more liquor.
7. Don't let the alcoholic persuade you to drink with him on the grounds that it will make him drink less. It rarely does. Besides, when you condone his drinking, he puts off doing something to get help.
8. Don't be jealous of the method of recovery the alcoholic chooses. The tendency is to think that love of home and family is enough incentive for seeking recovery. Frequently the motivation of regaining self-respect is more compelling for the alcoholic than resumption of family responsibilities. Or you may feel left out when the alcoholic turns to other people for help in staying sober. You wouldn't be jealous of the doctor if someone needs medical care, would you?
9. Don't expect an immediate 100% recovery. In any illness there is a period of convalescence. There may be relapses and times of tension and resentment.
10. Don't try to protect the recovering alcoholic from drinking situations. It's one of the quickest ways to push him into a relapse. He must learn on his own to say "no" gracefully. If you warn people against serving him drinks you will stir up old feelings of resentment and inadequacy.
11. Don't do for the alcoholic that which he can do for himself or which must be done by himself. You cannot take his medicine for him. Don't remove the problem before the alcoholic can face it, solve it, or suffer the consequences.
12. Do offer love, support and understanding in his sobriety.

# LOADED WITH SOBERING CONSEQUENCES

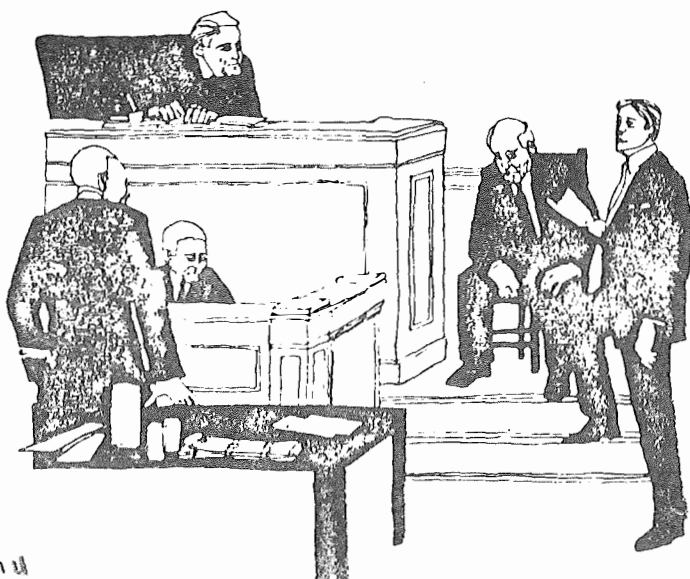
## PENALTIES

CONVICTION	FORFEITURE/FINE	JAIL	LOSS OF LICENSE	ASSESSMENT	POINTS
1st OWI	\$150-\$300 (plus \$150 surcharge)		3-6 mo. susp.	Yes	6
2nd OWI	\$300-\$1,000 (plus \$150 surcharge)	5 days-6 mo.	6-12 mo. Rev.	Yes	6
3rd or more OWI	\$600-\$2,000 (plus \$150 surcharge)	30 days-1 yr.	1-2 yrs. Rev.	Yes	6
1st refusal chem. test			6 mo. Rev.	Yes	
2nd refusal chem. test			1 year Rev.	Yes	
3rd refusal chem. test			2 years Rev.	Yes	
Causing Injury while OWI	\$300-\$2,000 (plus \$150 surcharge)	30 days-1 yr.	1-2 yrs. Rev.	Yes	6
Causing great bodily harm while OWI	up to \$10,000 (plus \$150 surcharge)	Up to 2 yrs.	2 yrs. Rev.	Yes	
Homicide while OWI	Up to \$10,000 (plus \$150 surcharge)	Up to 5 yrs.	5 years Rev.	Yes	
1st driving after rev/susp. for OWI	\$150-\$600	Up to 6 mo. *	6 mo. Rev.		6
2nd driving after rev/susp.	\$300-\$1,000	10 days-6 mo.	6 mo. Rev.		6
3rd driving after rev/susp.	\$1,000-\$2,000	30 days-9 mo.	6 mo. Rev.		6
4th driving after rev/susp.	\$1,500-\$2,000	60 days-1 yr.	6 mo. Rev.		6
5th & Subsequent	\$2,000-\$2,500	6 mo-1 yr.	6 mo. Rev.		6
1st violation of Occupational Lic.	\$150-600		6 mo. Rev.		6
2nd violation of Occupational License	\$300-\$1,000	Up to 6 mo.	6 mo. Rev.		6
Open Container	\$64 (passenger) \$120 (driver)				

\* Jail mandatory if charged as crime.

## Facts About . . . Wisconsin's NEW Drunk Driving Law

- \* ASSESSMENT
- \* EDUCATION
- \* TREATMENT



### NOTICE!!!

President Reagan has signed into law a new job training bill called the Job Training Partnership Act, otherwise known as JTPA. JTPA will replace CETA effective October 1, 1983. As of this date, the CETA Office will hereby be known as the Oneida Career Development and Placement Office.

The Oneida Tribe Career Development and Placement Office's emphasis will be placed on preparation for placement in jobs in area businesses and industry according to Labor Market Information and future employment opportunities with the Oneida Tribe.

Other services provided are career exploration and planning, job-seeking skills training, classroom training, on-the-job-training and counseling. These services will assist individuals in maximizing employment opportunities which will eventually lead to long-term employment and job retention.

The Oneida Career Development and Placement Office is open to anyone interested in increasing their employment and career opportunities.

Further information on JTPA services may be obtained by calling either 869-2752 or 833-6841. You may also stop in to visit the office in the Oneida Tribal Building at 1288 Fish Creek Road.

### !!!!ATTENTION!!!!

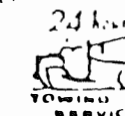
Have you been putting off going back to school to complete your high school education? Now is the time to act!

The Oneida GED classes will continue to operate even though they now have a new sponsor called the "Job Training Partnership Act" which became effective October 1, 1983.

For more information, call either 869-2752 or 833-6841 or stop by the Career Development and Placement Office (formerly CETA) located in the Tribal Building at 1288 Fish Creek Road.

Auto & Truck Service • Body Work Painting  
Most Types of Welding • Sand & Gravel

VANS SERVICE



Scott VanDenBerg  
(414) 788-1849  
John VanDenBerg  
(414) 788-5463

Hrs 8:00 to 5:00  
1377 Freedom Rd  
DePere WI 54115

Winter Special (Winterize your car)

Preston good for -40, test battery and charging system, most cars \$12.95

Whole line of new batteries starting as low as \$35.00

Oil change & lube (5 qt. system) \$11.95

If you have any questions about your insurance, this message is for you.

Most of us are uncertain at times whether we have enough life insurance. But many of us just continue to worry about our family's security. As a representative of Metropolitan Life Insurance Company, I can help you find out where you stand. You may be pleasantly surprised, or at least free from doubt. Isn't peace of mind worth a few minutes of your time?



Wayne D. Doxtater  
Sales Representative

417 South Adams P.O. Box 1427 Green Bay WI 54305  
Office (414) 437-6521 437-0300 Residence (414) 869-2932

\* INDIAN FOSTER HOMES NEEDED \*

The Oneida Community is in need of licensing more Indian Foster homes for our young youths. If you are interested in providing care for our Indian children in need, please contact Ken Ninham at 869-2711, extension 262. Thank you for your cooperation.

Ken Ninham, ICW, B.S.W.  
Oneida Comm. Health Center  
Oneida, WI 54155

The Indian Child Welfare Program has been established to insure protection of the best interests of Indian children and families by providing assistance in the operation of child and family service programs.

Any assistance or information needed regarding adoption, foster care, and termination of parental rights, is available upon request.

Call us; we are here to serve you.

Ken Ninham, ICW, B.S.W.  
ase Coordinator

\* ONEIDA DOMESTIC ABUSE PROGRAM \* OUTREACH OFFICE

We now have an OUTREACH office at the Sacred Heart Center, Room 1318 (on the second floor, near the chapel).

The telephone number is 869-1232.

I will be at the OUTREACH Office every TUESDAY, from 8:30 a.m. to 5:00 p.m.

Please feel free to "drop-in", or give me a call.

I will be available all other days including the 3rd Saturday of the month at the Oneida Health Center, but you will need to call during the week to set up a time convenient for our meeting. The number for the Health Center is 869-2711, and my extension is 261.

Bob Arneson  
Domestic Abuse Program

\*\*\* HIGH BLOOD PRESSURE SCREENING PROGRAM EXPANDS SERVICES \*\*\*

High Blood Pressure is often called the "silent killer", because many people with high blood pressure don't know they have it. Having your blood pressure checked may prevent heart attack, stroke, or kidney disease from developing. New screening sites are available, sponsored by the Oneida Community Health Nursing Program.

The sites and times are:

- Sacred Heart Center - 1st Tues. each month  
9:00-11:00 a.m.
- Tribal Building - 1st Friday each mth.  
9:00-11:00 a.m.
- Civic Center - 2nd Friday each mth.  
9:00-11:00 a.m.
- Elderly Feeding Site- (Site II) - 3rd Friday each mth.  
8:30-9:30 a.m.

\*\*\* FAMILY SERVICES AVAILABLE \*\*\*

Counseling services in the areas of Family, Marriage, Personal counseling, and Parent Effectiveness Training are available to all members of the Oneida community through the Family Services Department located in the Oneida Health Center.

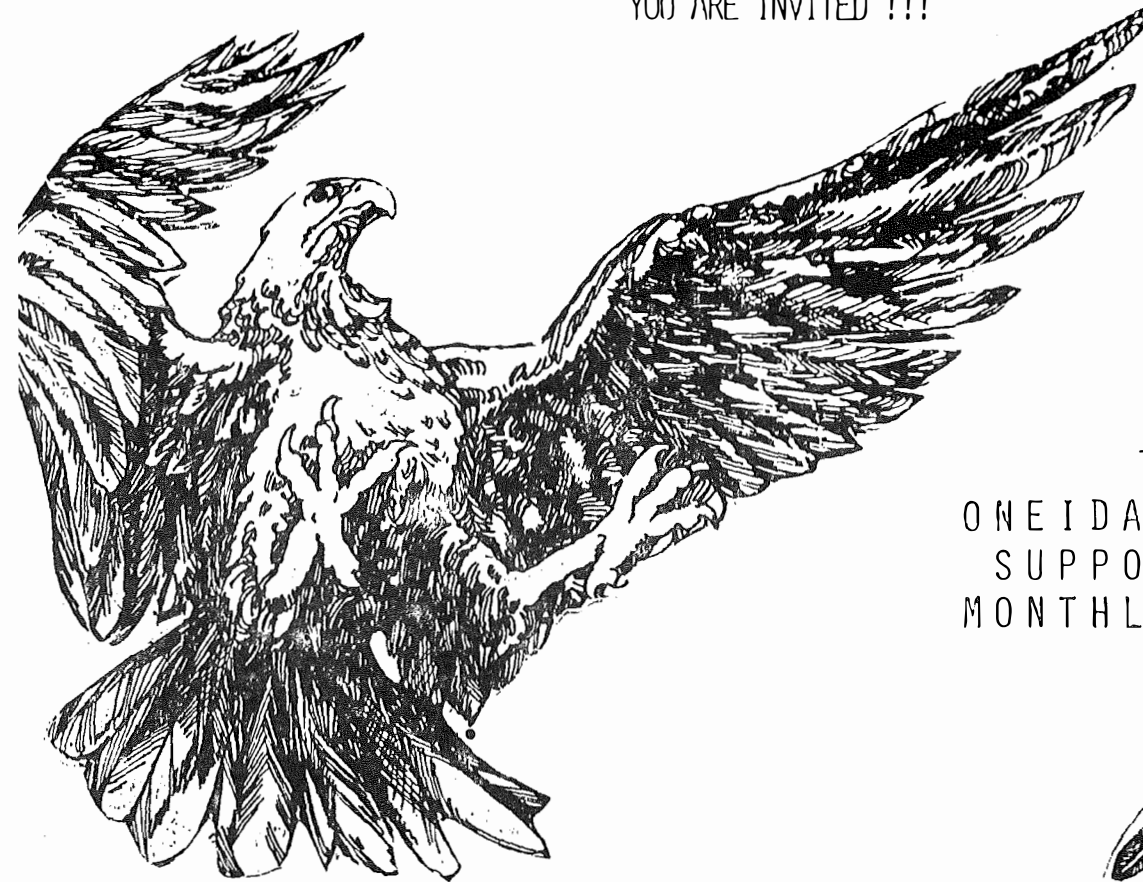
In addition to regular work hours, we are providing the above services on the third Saturday of the month.

Please feel free to call for an appointment so we can better serve you.

(869-2711, ext. 261)

Ken Ninham - Bob Arneson

YOU ARE INVITED !!!



TO THE  
ONEIDA SELF-HELP  
SUPPORT GROUPS'  
MONTHLY MEETING



"TOM PORTER"  
VIDEO PRESENTATION  
"COMMUNITY SPEAKER"  
BEING FORGIVING  
POTLUCK SUPPER

DATE  
JANUARY 21, 1984

TIME  
4:30 - ???

PLACE  
SITE 11 COMMUNITY BUILDING  
307 PARK DRIVE  
ONEIDA, WI. 54155  
(OFF RANCH ROAD)

IF YOUR EXPERIENCING PROBLEMS WITH ALCOHOL AND /OR DRUGS PLEASE FEEL FREE TO ATTEND THIS GROUP TO GET THE MUCH NEEDED SUPPORT AT THIS TIME IN YOUR LIFE. YOU ARE ALSO OFFERING SUPPORT TO THERS WHO ARE HAVING PROBLEMS WITH THIS NUMBER 1 KILLER OF INDIAN PEOPLE (ALCOHOL).

\* AL-ANON MEETING\*

An Al-Anon meeting will be beginning in Oneida. The meeting will be held at the Health Center in the conference room. (Downstairs) Al-Anon meetings will be held every Wednesday night at 7:00 p.m., starting January 11, 1984.

Al-Anon is related to A.A., but unlike A.A. Al-Anon is for people who are having problems with friends, relatives, family members and spouses that may have a drinking problem. In Al-Anon people come in to solve problems related to living with and dealing with an alcoholic. If you feel you may need this special support --- you are more than welcome to come and join us.

CHEMICAL DEPENDENCY

If you feel that you are in need of services regarding problems with alcohol and or drugs counseling, information and referral services are available. You can call for assistance at the Oneida Community Health Center, in the Chemical Dependency Department at 869-2711.

The greatest gift ever given is life itself. The second gift is a chance to honor myself and others by living sober.

Humbleness has been described as the art of being honest and sincere. Two qualities which will nurture sobriety.

Sharon Day-Garcia



Drink the winds, Let the waters flow free

The 1983-84 Low Income Energy Assistance Program (L.I.E.A.P) is now underway and will run through March 31, 1984.

Eligible persons may pick up and fill out an application at the Income Maintenance office located at the Tribal Building (1288 Fish Creek Rd.-De Pere).

The established guidelines for the program are as follows:

HOUSEHOLD SIZE	HOUSEHOLD INCOME LIMITS GROSS MONTHLY INCOME		
	100%	125%	150%
1	\$ 405.00	\$ 506.00	\$ 608.00
2	\$ 545.00	\$ 681.00	\$ 818.00
3	\$ 685.00	\$ 856.00	\$ 1028.00
4	\$ 825.00	\$ 1031.00	\$ 1238.00
5	\$ 965.00	\$ 1206.00	\$ 1448.00
6	\$ 1105.00	\$ 1381.00	\$ 1658.00
EACH ADDITIONAL	\$ +140.00	\$ +175.00	\$ +210.00

A household's payment is determined by it's gross monthly income level and fuel status.

GROSS MONTHLY HOUSEHOLD INCOME	FUEL OIL - LP GAS CANADIAN GAS	OTHER FUELS
At or less that 100% of poverty	\$ 310.00	\$ 290.00
More than 100% - 125% of poverty	\$ 235.00	\$ 220.00
More than 125% - 150% of poverty	\$ 155.00	\$ 145.00

\* All gross income received by the household in the calendar month prior to the month of application will be counted.

\* There will be no deductions allowed (except for self-employment) from gross income for employment related expenses, child care, setasides nor for any other reasons.

\* Any income that was intended for more that one month will be prorated.

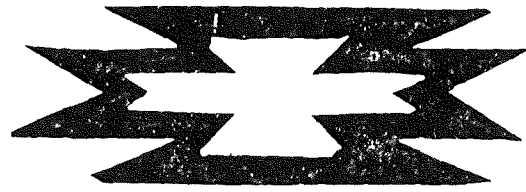
\* Persons living in subsidized housing are NOT eligible for energy assistance.

For any further questions please feel free to phone our office at any of the below listed numbers.

Oneida Tribal Income Maintenance Office  
P.O. Box 365 -1288 Fish Creek Rd. - De pere  
Oneida, Wi. 54155

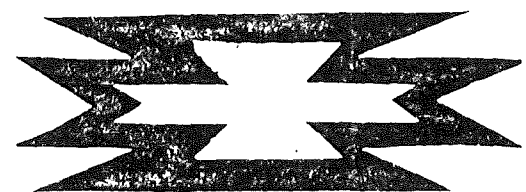
869-2752  
or  
833-6841

# Oneida FOOD DISTRIBUTION PROGRAM



<p>VEGETABLES FRUITS</p>	<p>MILK</p>
<p>MEATS</p>	<p>BREADS CEREALS</p>

PROVIDING NUTRITIONAL NEEDS  
TO THE INDIAN COMMUNITIES



1288 Fish Creek Road.  
DePere, Wis. 54115  
869-2752 833-6842

Nori Damrow, certifier



Oneidas bringing several hundred bags of corn to Washington's starving army at Valley Forge, after the colonists had consistently refused to aid them.

ONEIDA  
COMMUNITY HEALTH CENTER



Oneida, WI 54155



UGWA DEHOLUH YATEHE  
Because of the help of this Oneida Chief in cementing a friendship between the six nations and the Colony of Pennsylvania, a new nation, the United States was made possible.

414-869-2711

DENTAL INFORMATION: Nursing Bottle Mouth

Bottle feeding is one method of providing nourishment to an infant, but too often the nursing bottle containing sweetened liquids is misused as a pacifier for comforting the infant or controlling behavior. This habit can lead to Nursing Bottle Mouth, a condition in which a 2, 3, or 4 year old child's teeth are destroyed by dental caries (tooth decay).

What causes Nursing Bottle Mouth? The type of liquid in the bottle and feeding habits that result in prolonged exposure of the infants teeth to this liquid cause Nursing Bottle Mouth. Decay can occur when sweetened liquids are frequently given to the infant throughout the day and night, especially when the infant is falling sleep.

How Does Nursing Bottle Mouth Happen? As soon as the infants teeth appear in the mouth, they are susceptible to decay. The sugar contained in formulas, some juices, and other sweetened liquids, mix with plaque (a thin, sticky, colorless film of bacteria that constantly forms in the mouth). This interaction forms acid that attaches tooth enamel, and decay begins. Each time sugar is eaten, whether in solid or liquid form, acid will attack the teeth for 20 minutes, if the teeth are not immediately cleaned. Daytime pacifying is harmful because the teeth have direct, prolonged contact with sugar. There is also increased concern where the infant is allowed to fall asleep with the bottle in their mouth. During the day, saliva helps to wash some of the liquid out of the mouth. However, at bedtime, or during naps, the saliva flow decreases, allowing the sugary liquid to pool around the teeth. When this pooled liquid remains in the mouth for prolonged periods, teeth are constantly attacked by acids.

In our next informational report, we will discuss how to prevent Nursing Bottle Mouth. In the meantime, if you have any questions or concerns, feel free to call the dental clinic at 869-2711, extension 264.

Dental Staff

WELL AND SEPTIC PROGRAM

At present there is a need for qualified applicants in the well and septic systems program. To qualify there is certain criteria that must be met.

1. Person must be an enrolled Oneida Tribal member.
2. Must have enough land to allow for installation of well and septic system.
  - a. Land may be taxable, tribal, or trust property.
3. Land must pass percolation test by Indian Health Services before either a well or septic system can be installed.

Application forms can be obtained at the Home Improvement Office located in the Tribal Building located 1288 Fish Creek Road and County Trunk "H".

If you have any questions, please call Gerald Kurowski, Home Improvement Program (HIP) Coordinator at 869-2753 or 833-6841.

ONEIDA RECREATION

For everyone out there, we will be having different games scheduled at the gym on almost every Saturday afternoon. They will be starting at 5:00 p.m. The price to get into all these games is \$.25 for everybody.

The kitchen will always be open where we will be having: hamburgers - 65¢, hot dogs - 50¢, candy - 35¢, and pop - 50¢. We will be having french fries and popcorn later on.

There is also games in the lobby that can be played: pinball machine - 10¢, a bowling game - 25¢, and fooseball - 25¢.

So watch for the games and come down and have an evening of fun.

On January 8 the Oneida Ladies basketball team played the Oneida High School girls.

Jumping out to a quick start was the Oneida girls. They continued this lead through the first half with a strong show in defense.

Starting the second half the Ladies began with a tight press causing the opponents to turn over the ball. The game ended Ladies 44 Girls 41. "Too close for comfort."

The Oneida Girls are coached by Rick Hill and the Oneida Ladies by Dan Ninham.

On Saturday, January 13, the Oneida Ladies will be playing the Golden Oldies coached by Ronnie John at 5:00 p.m. at the Sonny King Gym.

HONOR THE CHILDREN POWWOW

Saturday Grand Entry - 2:00 p.m.  
Sunday Grand Entry - 1:00 p.m.

Arts and Crafts Booths (limit of 22 tables)  
Indian Baby Show  
Recognition of youth from all areas . . .

Location: Premontre Gym, Ridge & Mason Sts. (Hwy. 54), Green Bay, WI

JANUARY 28 - 29  
ADMISSION: \$2 (Under 5 Free)

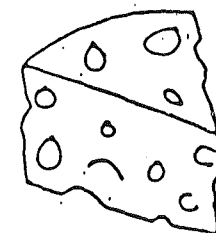
Contact: Stan Webster, 414-494-2961

HONOR THE EARTH EDUCATION FOUNDATION  
Presents

TRADITIONAL BIBOON (Winter) POW-WOW

Saturday, January 21, 1984  
New Post Elementary School Gym  
Pot Luck Feast - 4:00 p.m.  
Open Drum Pow-wow - 6:00 p.m. til ?  
Arts & Crafts - Traders Welcome

No drugs or alcohol allowed  
Not responsible for accidents or loss of property



FREE  
CHEESE, BUTTER  
AND  
CHOICE OF OTHER COMMODITIES  
(CORNMEAL, HONEY, DRY MILK)

++++

APPLICATION AND DISTRIBUTION  
SACRED HEART CENTER - ONEIDA

++++

FRIDAY, JANUARY 27, 1984  
8:30 A.M. - 12:30 P.M.

(IF SUPPLY LASTS)

\*\*\*\*\* OUTAGAMIE COUNTY RESIDENTS ONLY \*\*\*\*\*



CHEESE and BUTTER and other COMMODITIES will be distributed to the following household income levels on Friday, January 27.

GROSS MONTHLY HOUSEHOLD INCOME less than:										
	\$608	\$818	\$1028	\$1238	\$1448	\$1658	\$1868	\$2078	\$2288	\$2498
HOUSEHOLD:	1	2	3	4	5	6	7	8	9	10
HOUSEHOLDS OF 1-3:	5 pounds of processed cheese, 1 pound of cheddar 1 pound of butter and 1 dry good.									
HOUSEHOLDS of 4-6:	Double amount.									
HOUSEHOLDS of 7 or more:	Triple amount.									

PLEASE bring your own grocery bags.



COURSE: Basic Police Training

CLASS NO. 47

Training Dates: 4/8 - 6/15/84  
Application Deadline: 3/1/84

CLASS NO. 48

Training Dates: 9/9 - 11/16/84  
Application Deadline: 8/1/84

COURSE: Supervisory Enforcement Officers  
Training

CLASS XVII

Training Dates: 4/15 - 5/4/84  
Application Deadline: 3/5/84

COURSE: Command/Management

CLASS IX

Training Dates: 6/3 - 6/15/84  
Application Deadline: 4/9/84

COURSE: Basic Firearms Instructor

CLASS VII

Training Dates: 3/18 - 3/30/84  
Application Deadline: 2/6/84

PERSONNEL

POSITION: Bookkeeper  
LOCATION: Oneida Nursing Home  
SALARY: Grade 9 5.27/hr. minimum -  
Negotiable  
CLOSING DATE: January 23, 1984

Applications should be submitted to:

Mr. Dale P. Wheelock, Personnel Director  
Oneida Tribe of Indians of Wisconsin  
P. O. Box 365  
Oneida, WI 54155

\*\*BIRTHDAY WISHES GO TO THE FOLLOWING\*\*

Wayne Wishart Jan. 4  
Debbie Wisneski Jan. 28  
Kyle Wisneski Jan. 23  
Joe Webster Jan. 11  
Vicki Webster Jan. 12  
Jenny Wishart Jan. 19  
Shantel Christjohn Jan. 5

FOR SALE

Red leather wheelchair  
Call 869-2954 after 5:30 or 869-2711

3-bedroom modular home  
2 full baths, stove & refrigerator go with  
All carpeted except kitchen - 7 yrs. old  
Asking \$25,000  
Call 869-2823 if interested

AM/FM car radio & cassette player  
Asking \$40.00  
Call 869-2737

1974 Liberty Mobile Home 14 x 70  
On 2 acres of tribal land with well,  
septic system, electric and telephone  
service.  
Included are 25" color TV with outside  
antenna.

8 x 10' toolshed, insulated and has elec-  
trical outlets.  
Located at 2481 Government Road  
Asking \$10,500  
Call 833-2410

Cross Country Skis  
Used only one year  
Skis, shoes & bindings  
Asking \$60  
Call 869-1174

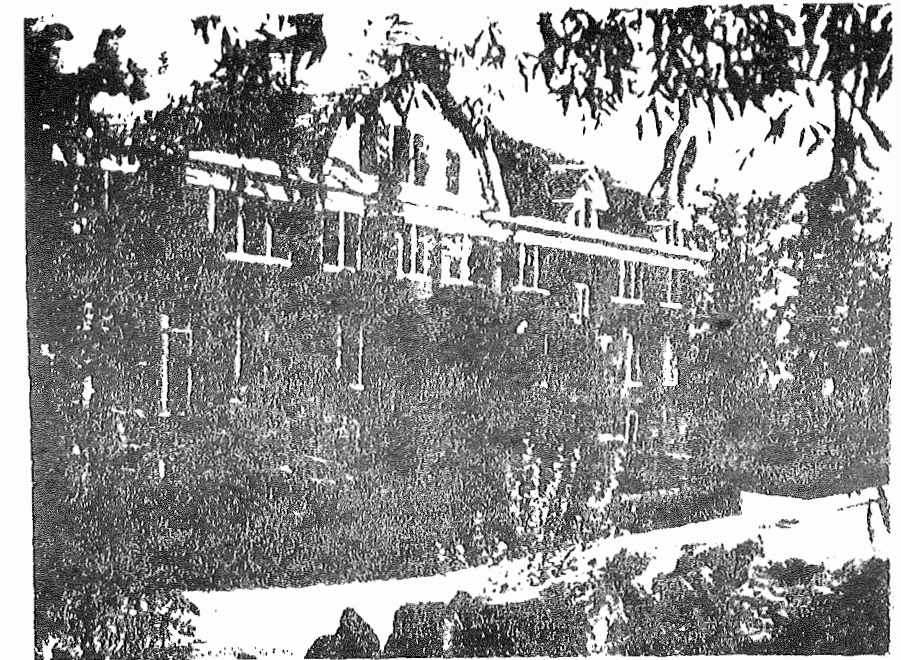
8-point star quilt - homemade  
Blue & white stars on white background  
Call 1-414-829-5445

AM/FM Multiplex 8-track recorder with  
earphones - two 12 x 23 speakers  
Lloyd's (new needle)  
Excellent condition  
Asking \$100 or best offer  
Call between 1-5 at 869-2500

White Corn  
Call Henry Skenandore  
Phone: 833-2411  
County Trunk H 2112  
\$1.00/quart

Two 500 lb. Hereford Heifers  
\$300 each  
Call 869-2171

1973 Chevy Impala Station Wagon  
Rusty, but runs good.  
Asking \$300  
Call 869-2171



*The Indian School from the old stone steps.*

# Winnebago Indian School Reunion

**Fri., Sat., Sun., July 13, 14, 15, 1984**

## Snyder Park

6 miles from School on Hwy. 10 West of Neillsville

Registration Fees: Adults - \$3.00 Children 1 - 12 - \$1.50

1. Camping Available
2. Swimming - Playground
3. Bring Costumes
4. Bring own Craft Stands - Food Stands allowed
5. Meals will be provided
6. 3 Big Calendar Day Events
7. Open to the Public - School Tours

### — ITEMS NEEDED —

- \*DONATIONS
- \*SIGN MAKER
- \*COOKS
- \*PHOTOGRAPHERS
- \*SPONSORS
- \*FORMER STUDENTS' ADDRESSES
- \*FORMER EMPLOYEES' ADDRESSES
- Dates of Employment & Job Title

Please send registration fees and donations to

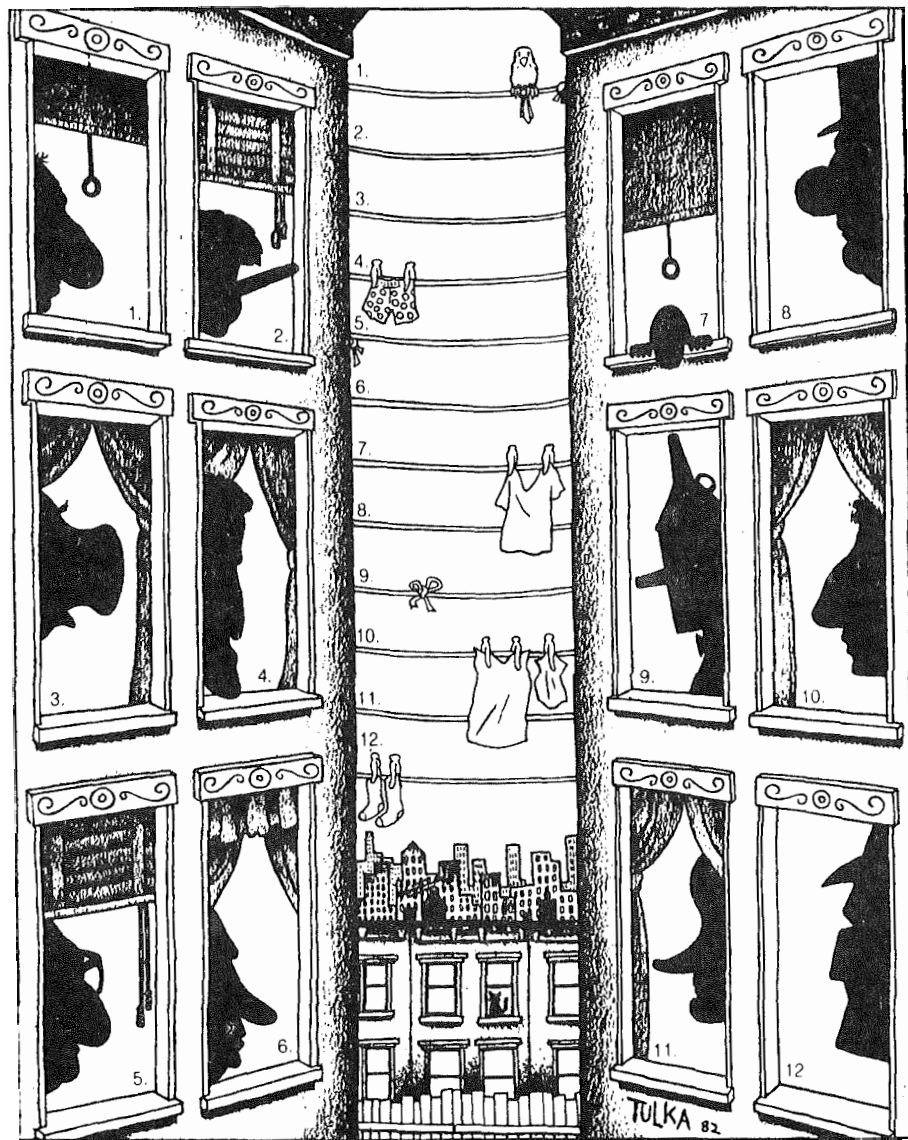
First National Bank  
450 Hewett Street - NEILLSVILLE, WI 54456  
ACCT. NO. 5012-9320 (Make sure Acct. No. is on Letters)  
**NO ALCOHOLIC BEVERAGES ON GROUNDS - AREA POLICED**

For further information contact

PEARL STORM  
P. O. Box 13  
Neillsville, WI 54456

**Nosy Neighbors**

There's a bit of gossip going on between the apartment dwellers in this month's Puzzler. As it happens, all are famous people or characters whose distinctive schnozzes should help you readily identify them. In case you have any problems, the names are below.



Answers can be found on the last page!!

The above puzzle is taken from GAMES Magazine.

the afternoon. In the past, classes will be starting on Friday mornings rather than in the afternoon. In the past, classes have begun at 3:00 p.m. on Fridays and ended late on Saturday afternoons. This spring semester classes will be starting at 11:00 a.m. on Friday so two science labs could be scheduled within the weekend format to accommodate fifty students. We know that this will be difficult for some of the students but this was the only avenue available to us to get all of the courses and their labs in within the weekend schedule of Fridays and Saturdays. This will mean that some of your employees will have to leave earlier for Stevens Point on Fridays than they did in previous semesters.

We hope this will not inconvenience tribal operations to any great extent. We will try to insure that classes will begin later on Fridays in the future semesters. If you have any questions concerning the change or in general about the Associate Degree Program, please do not hesitate to call me or Mrs. St. Germaine at 715-346-3576. We will be happy to answer your questions and work with you in any way possible.

AMERICAN INDIAN TRAINING PROGRAM

The American Indian Training Program in UWM's School of Social Welfare has been in existence for six years. We offer fellowships to American Indians who wish to pursue their Master's of Social Work degree here at UWM. This year we are supporting nine students, two of whom will be graduating in December of 1983.

We have been given unofficial word that our program will be funded at the level of its present funding. That means we will be able to welcome several new students in the fall of 1984.

The Training Program offers tuition and a \$441 per month stipend. Students may elect to attend summer school as well as the regular school year. To qualify you must be accepted into UWM's Graduate School of Social Welfare. Applicants must also present a certification of tribal affiliation and show financial need.

Please call or write me if you know of anyone who is interested and qualifies for this fellowship. Since my position is funded on a much reduced level, I may not be in when you call. Please allow the phone to ring at least ten times. The Native American Studies Program will answer the phone and take your message. I will return your call as soon as possible. My office hours are Tuesdays 8:30-4:30 and Thursday 11:30-4:30. I hope to be hearing from you soon.

Sincerely,

Susan Chicks, Coordinator  
American Indian Training Program

U.S. INDIAN POLICE ACADEMY

Re: Application Deadlines for Training at the United States Indian Police Academy

We have been experiencing late submission of applications and floods of last minute telephone calls asking for consideration to attend the United States Indian Police Academy.

We were fortunate to have some late applicants approved this past few weeks. We were recently informed by the Acting Director, Mr. Melvin Gibson, of the United States Indian Police Academy they cannot make anymore exceptions in the future.

We are again attaching the United States Police Academy's training schedule for FY 84. Please note the application deadlines are dated for each course. This is the deadline for the applications at the academy. Therefore, you will need to ensure your applications reach our office at least five working days ahead of the deadline at the academy.

You are also reminded that applications for the basic police training course must have attached the applicant's full and completed medical examination report signed by a physician.

We would also like a statement from your office recommending approval and that the applicant is fully eligible to be considered for such training.

The training schedule is as follows:

PUBLIC HEARING NOTICE

COMMUNITY DEVELOPMENT BLOCK GRANT

A Public Hearing open to Tribal members has been scheduled for Thursday, January 26, 1984 at 1:30 p.m. to receive suggestions and proposals for projects to be considered for a Community Development Block Grant Application. The grant is a competitive application and the total amount of funds requested from all the Tribes east of the Mississippi River will greatly exceed the total available from the Department of Housing and Urban Development. The maximum grant available to the Oneida Tribe is \$250,000. Projects that involve economic development, community facilities and improved housing stand the best opportunity of being funded. A complete list of eligible projects is available in the Planning Office.

The hearing will be held in the downstairs conference room of the Tribal Building at 1288 Fish Creek Road.

NWTI

NWTI will begin accepting applications for admission on January 3, 1984. These Associate Degree programs are Electro-Mechanical Technology, Electronics, and Electronics-Communications, and are based on the Green Bay campus. The first year of the Electronics program will be available on the Marinette campus as well. However, after the first year in Marinette, the student will have to take the second year on the Green Bay campus.

Requisite for admission to these programs is Technical Mathematics I or satisfactory placement on NWTI's math placement examination. This examination will be made available so that students who did not take Technical Mathematics I will have an avenue of meeting the requirement. NWTI will be able to make the placement math test available through the mail to your high school if you are willing to monitor the test and return it to us.

Students will not be admitted to any of these programs if they do not meet the requirement in mathematics. However, NWTI will have instruction available so that students can obtain the required math knowledge prior to Program admission.

Students do have the opportunity at NWTI campuses to take mathematical course work on an individual basis. This opportunity will also be available during the summer session. Hopefully, these methods will alleviate the problem for those who were not aware of the math requirement.

If you have any questions on this matter, please contact Robert Budz at 498-5498. Questions on the first year of the Electronics program at Marinette should be referred to Daniel Goron at 498-5748.

Sincerely,

Henry A. Wallace, Jr.  
Administrator/Student Services

UPDATE & TIME CHANGE OF THE ASSOCIATE DEGREE PROGRAM AT UWSP

The Associate Degree Program is progressing very well since it began as a pilot project two and one-half years ago. The student enrollment has increased now to fifty. The students are taking about 7 credits per semester. The students are here for approximately ten weekends out of each semester on a two weekends on and one weekend off schedule.

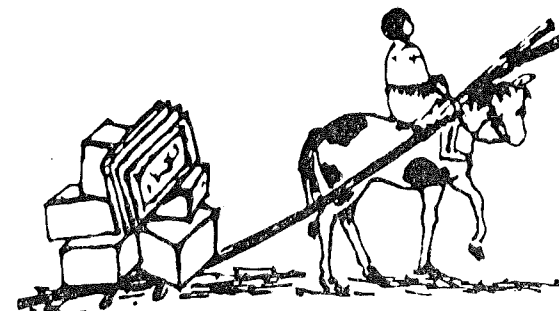
The Associate Degree Program is an entry level degree program which is technically one-half of a Bachelor's degree. The weekend college format selected by the tribal members was designed so that people who work full-time or have young children can still work toward a degree.

One major asset of this program is that we work with the students throughout the semester providing advising and counseling. Mrs. Martha St. Germaine is the advisor/counselor and her job is to work with the Associate Degree students totally so that success is more attainable for the students.

The courses available will be Psychology 110, English 101, Math 50/51, and Astronomy 100 this coming spring semester. The classes will begin on February 3, 1984.

There is one major change we would like to alert you to this coming semester. Because of the increase in the number of students and also due to the science course requiring lab sessions, classes will be starting on Friday mornings rather than in

# Oneida Trading Post



The ONEIDA TRADING POST has moved into the PRICE SLAUGHTER HOUSE MALL --off Highways 41 and 54, behind A&W ROOTBEER RESTAURANT. Abalone conchas and Pendleton blankets are newest supplies in January.

Regular store hours:

Friday	10 to 9
Saturday	10 to 6
Sunday	10 to 5

CHANGE OF BUSINESS LOCATIONS

This is to inform our readers that the Business Committee has moved to the Sacred Heart Center and has a new phone listing of 869-1260.

Also, the Personnel Office is now located at the Oneida Nation Memorial Building (Civic Center) and their phone number is still 869-2771.

MESSAGE FROM OUR NURSING HOME ADMINISTRATOR

As administrator of the Oneida Nursing Home, I wish to address, and hopefully dispell, some of the rumors going through the community regarding the care given to the residents of the nursing home. It is true that the recent cold weather brought problems like frozen and broken water pipes. However, every effort was made to ensure the comfort and safety of the nursing home residents. Maintenance men worked around the clock to repair the broken water pipes as quickly as possible. Numerous people were brought in to find a viable solution to the problem so that a similar situation does not occur in the future. If indi-

viduals from the community have questions regarding the nursing home, they are encouraged to call or stop by for answers to their questions.

The nursing home has recently been surveyed by the State Division of Health. Their findings are available for inspection at the nursing home Monday through Friday from 8:00 a.m. to 4:30 p.m. In their findings, the State commended the staff for the excellent care given to the residents of your nursing home as well as the cleanliness of the building. In short, the care given to residents of the Oneida Nursing Home can be matched against any other nursing home in the State of Wisconsin.

Rick L. Johnson

PRESS RELEASE FOR IMMEDIATE NOTIFICATION

MA-NE Wisconsin Winter Crafts Celebration in the Woodland Indian Tradition will take place consecutive Thursdays: January 19, 26, and February 2 from 10-12 a.m. and 1-2 p.m. at the State Historical Society of Wisconsin.

Cecelia Lonetree will be demonstrating Traditional Beadwork on January 19, and Truman Lowe will demonstrate German silver techniques. Films and exhibits will be shown in conjunction with the celebration.

Funding made possible in part by Dane County Cultural Affairs Commission. For more information call: 608/262-2704.

BEST WISHES

Best wishes to Diane & Ed King on the birth of their new son from your family.

Best wishes to Juan & Glynis Alicea and baby Maria in their new home. Hope it's filled with many special moments. Love the rest of the Alicea's. We'll be over for supper soon!!

POWWOW COMMITTEE MEETING

A Powwow Committee Meeting was held and the following plans have been made for the July 4, 5, 6, 7 & 8 Powwow.

- There will be an Art Show - artists and craftsmen will be there.

-There is also a parade scheduled for July 4th.

-The Oneida Princess will be picked on July 4th.

-An Oneida Honor Marathon will be held with the following marathons run:

- \* 26 mile
- \* 13 mile
- \* 6 mile
- \* 3 mile

This marathon is in honor of Levi Webster.

-They are also attempting a track & field Olympics. They are looking for someone to be in charge of this.

-Ronny Jourdan will be the M.C. this year.

-There will also be an attentive fund raising held by the Powwow Committee on March 3-4. The site has not yet been decided.

ELIJAH SMITH VISITS ONEIDA

Elijah is a retired halfback and member of the American Indian Athletic Hall of Fame at Haskell Indian Junior College in Lawrence, Kansas.

Elijah was here to visit his sister, Mrs. Frissell Elm of Oneida and brother Bill Smith of Milwaukee. He also visited his nephew, Mr. & Mrs. Nathan Smith & family. Before he got to Oneida, he went to visit his son, Ray Smith, who is the head football coach at Hope College in Holland, MI. Elijah makes his home in Sun City, Calif.

His other nephews, Blake & Kent Smith and Norbie Elm didn't get to see him.

Blake was here over the holidays to visit his father Nathan & Caroline.

Blake is attending U.W. Oshkosh majoring in Business Administration.

Kent is a senior at Bowler High School playing on the football, baseball and basketball team.

Norbie Elm is in the Marine Reserve stationed in California.

Blake & Kent hope to attend U.W. Madison September 1984.

ONEIDA RECREATION

We had a game at the Sonny King Gym. It was held on Saturday night between our Oneida Recreation Boys High School basketball team and our Oneida Men.

I feel that these men should be called the Golden Oldies as they are just like old hit records, you never get tired of hearing or seeing them.

It was an excellent game as our young men ran and jumped off to a nine point lead at the half. It was at this point that team captain Ron John pulled his team together and they really started a tremendous comeback. The end result was a 84-79 victory for the men.

Players for the men were: Ron John, Yogi Metoxen, David Powless, Jack Powless, Geno Danforth, Francis Skenandore, Bob Thomas, Eugene Powless, Ken Webster, Bob Christjohn, Lloyd Powless, and Pete King & Ernie Stevens.

Playing on the Recreation High School team were: Keith Cottrell, David Schuyler, Ror Hill, Fran John, Jerry Delgado, Matt Denny, David Stevens, Wayne Metoxen, Jubee Doxtator, Bob Madrid, and Hugga Powless.

At half time the plaque was given to Sonny King by Purcey Powless that will hang in our gym forever. It is a plaque in appreciation to Sonny for all the years of work that he has done for the Recreation Program. Once again, we all thank you for all the things you have done.



The following are poems written by the GREY PANTHER:

"Bartender's Point of View"

He came in with his pockets lined with silver. Dropped a few coins on the bar; had a Brandy. Told me he used to be a country star.

"You don't have to be loud to play music," he said. "We stopped at every little spit on the road always packed 'em in, had a crowd."

"Gettin' older, left me with a bad heart. Now, I don't sing on lighted stage floors. Used to make a lot of Boo-Coo money at honky-tonks with flowin' beer and swingin' doors.

"Your Dream"

I long for my flesh to be inside of you, circling upward to kiss your belly. Now, with anxieties spent on spirits, I only touch you within a world of dream people. (I could sleep for an eternity on loved soaked clouds, beneath me.) Your love is comforting, like a soft robe. I have shown you my weaknesses, making me vulnerable, to quiver beneath your opalescent body. I need you to return the sunlight captured within your oceanic eyes. I want your gentle kiss, to have the power to awaken me. I have dreamt of you too many nights, you have been away far too long.

"For: B. Osuha"

Tomorrow you will dance, pouring your soul out to drums. An Indian soul; woman's soul, your dancing soul. } CHORUS

Though your people live high among mountains, you will dance with them. When feeling soft buckskin swaying to your rhythm, you sing a song for the deer; Grand Entry draws near.

Drum-beats become your own heart-beats, as you circle a fancy dancer's feet. He catches you up in mirrors, strapped along calico arms. There he holds you until the Two-Step begins to throng.

(Chorus)

The following was submitted by LOREN:

UNDERSTANDING

"But of him are ye in Christ Jesus, who of God is made unto us wisdom . . ."

1 Corinthians 1:30

I believe we ought to get all the education we can, but we dare not make it our god. John Dewey once defined education as the systematic, purposeful reconstruction of experience; but so much of modern education leaves out God. What we are actually doing is reconstructing our sins. We expand our sins, enlarge them, multiply them. We need education, but not just for the mind and body; we also need education for the spirit. Man has a spirit, and in our educational system today, we need a spiritual emphasis. If we bring up a generation that lacks the wisdom that God can give, they can turn into educated savages and fools. "The fear of the Lord is the beginning of wisdom" and education. Let's make sure our rock is God.

Almighty God, I am grateful to you that your Word educates my spirit and makes me whole.