

*****SEMI/SWEET DRINKS*****

DRY DOCK MANHATTAN (1 serving)

1/3 cup well-chilled black cherry soda
2 teaspoons lime juice
1/4 teaspoon bitters

Combine all ingredients in cocktail shaker. Add ice.

□ □ □ □ □ □ □ □ □ □ □ □ □ □ □ □

GINGER 'N' BITTERS (1 serving)

1 serving of ginger ale
generous dash of bitters

Shake bitters into highball or old-fashioned glass. Add ice and ginger ale. Stir and serve with stir rod and twist of orange.

*****TART TASTING DRINKS*****

THIN 'N' TONIC (1 serving)

3/4 cup quinine water
Ice cubes
Lime slice

Pour quinine water over ice cubes in glass. Squeeze juice from lime slice into drink; then add slice.

□ □ □ □ □ □ □ □ □ □ □ □ □ □ □ □

PILGRIM'S PROGRESS (1 serving)

2 jiggers cranberry juice
2 jiggers pineapple juice
Lemon slices

Mix pineapple and cranberry juices in large pitcher; pour over crushed ice in tall glass; garnish with lemon slices.

□ □ □ □ □ □ □ □ □ □ □ □ □ □ □ □

MILD-EYED MARGARITA (1 serving)

1 cup bitter lemon or lime soda
Juice of 1 lime
2 teaspoons sugar
Salt to taste
Crushed ice

Pour soda in ice cube tray and allow to freeze thoroughly. Place in blender container; add lime juice and sugar; process. Rub lime around rim of glass and dip in salt. Serve the mixture over crushed ice in the salted glass.

*****PUNCHES*****

SPARKLING FRUIT SLUSH (10 servings)

2 pints unsweetened pineapple juice
2 6-oz. cans pink lemonade concentrate
1 cup water

Add juice of 1 lemon or lime

Mix ingredients and freeze overnight. Remove from freezer just before serving. Stir well. (Keeps in freezer)

□ □ □ □ □ □ □ □ □ □ □ □ □ □ □ □

CARDINAL PUNCH (44 servings)

1 quart cranberry juice
1 pint orange juice
2 lemons squeezed or 2-oz. lemon juice
4 quarts ginger ale

Combine juices with ice and chill. Pour into punch bowl over block of ice and add ginger ale. Garnish glasses with mint sprig. (May add orange sherbert scoops.)

□ □ □ □ □ □ □ □ □ □ □ □ □ □ □ □

WASSAIL ON THE WAGON (1 1/2 gallons or 64 4-oz. servings)

1 gallon apple cider
1 quart hot water
1/2 cup instant tea
2 tablespoons lemon juice
1 1/2 teaspoons powdered cloves
1 1/2 teaspoons cinnamon
1/2 cup sugar
1 cinnamon stick

Heat water, add tea, cider, lemon juice, sugar, cinnamon, cloves, and cinnamon stick. Serve warm.

KALIHWI•SAKS

*The Official Publication
of the Oneida Nation*

This publication is distributed free to all enrolled Oneida Tribal members. If you know of someone who is not receiving KALIHWI•SAKS, please have them send their name and address as they are listed on the Oneida rolls to:

KALIHWI•SAKS
Oneida Tribe of Indians
of Wisconsin
P.O. Box 365
Oneida, Wisconsin 54155

or call:

414 — 869-1260

KALIHWI•SAKS is distributed locally at the beginning of each month. Distribution nationwide is made at the end of each month.

STAFF:

Bobbi Webster — Editor

**ORIGINAL COVER DESIGN
CONCEPT:**

Mary Lee LeMieux

Redrawn by:
Loren Moore

Layout and Design:
Bobbi Webster

Table of Contents

Features

New Editor, "Kalihwisaks" 2
NHC Acquisition 2
Oneida Rodeway "TOPS" Out 3
Irene Moore Activity Center 4
Oneida Public Safety Dept. 5 & 6
Oneida Story "Great Light" 7 & 8
Johnson O'Malley Funding News 9
Sharon Metz Announcement 9
Grandparents Feast Thank-you 10
Anna John Nursing Home Trims Tree 11
Oneida Health Center News 13 & 14

Programs and Announcements

AJNH Calendar of Activities 12
Scholarship News 15 - 17
Announcements & Calendar 18
Special Wishes 19
Opportunities in Health Professions 20
Women's Volleyball Schedule 21
Art Exhibition & Application 22
Christmas Wishes 23
Employment Opportunities 24 & 25
Ads 26
Upcoming Winter Events 27
Birthdays, Births, Anniversaries, Congratulations & Memoriams 28
Ads 29
Wisconsin Public Service Announcement 30
Holiday Party Planning 31 & 32

DECEMBER 20, 1985

NEW KALIHWSAKS EDITOR BOBBI WEBSTER



She•ku:

I would like to take this opportunity to introduce myself as the new Kalih•wisaks Editor. As of November 12, 1985, the Kalih•wisaks has separated from the newly established Oneida Printing Enterprise.

The Kalih•wisaks is presently located in the Norbert Hill Center, Room 6335, of the Business Committee Wing, phone: 869-1260, ext. 118.

During the 1986 publishing year, I will be remodeling the Kalih•wisaks in regard to content, format and paper quality; various other upgrading is necessary for a more effective and efficient newspaper. As Editor, I will be formulating policies and a survey for the readers' input in the changes to occur in the Kalih•wisaks.

During the month of January, Kalih•wisaks will be publishing one monthly issue due to the re-organization and relocation of the paper.

New deadlines for 1986 will be developed and posted in the first issue in 1986. Deadline for submitting news, notices, etc., is January 10, 1986; for publication, January 7th, 1986. So that this publication can become timely and efficient, these deadlines must be strictly adhered to. If you have suggestions, questions or comments, please call or write:
Bobbi Webster, Editor
Kalih•wisaks
P.O. Box 365
Oneida, WI 54155

Thank you and Merry Christmas and Happy New Year.

Norbert Hill Center Acquisition Final Report

The Oneida Tribe of Indians of Wisconsin now owns the Norbert Hill Center facility at Oneida, previously known as the Sacred Heart Seminary. A consideration of \$800,000 was made by the Oneida Tribe for the existing improvements. The Green Bay Diocese transferred the improvements and 118.71 acres of land to the Oneida Tribe. No consideration was given for the land.

The replacement value of the Norbert Hill Center is \$7,000,000 to \$9,000,000. Therefore the consideration given was less than 1/10 the current value in terms of dollar amounts.

There are, however, a number of other values that apply. Eighty acres of the 118.71 acres are **original** 1838 Treaty lands and were reserved by the Oneida Tribe for educational purposes in 1892. This point has dominative significance over all other values in terms of the relationship of the Oneida Tribe to the United States government.

Finally, the Norbert Hill Center is in very good condition and provides adequate office space and other space use for a myriad of Tribal projects. It is a hub of daily activity that generates positive programming that benefits each and every one of us.

A complete detailed report will be forth coming to the General Tribal Council meeting in January.

*This Report has been submitted to Kalihwisaks by: Loretta V. Metoxen, Negotiator

Planning a Party?

The holiday season is rapidly approaching! Traditionally, the holidays are a time when family and friends get together, a time of celebration. As hosts and hostesses, we want to be mindful of all our guests — those who drink alcohol and those who do not.

The Community Health Nurses offer the following tips to keep in mind when entertaining during this festive season:

- * Always serve food when serving alcohol. Food in the stomach slows the rate at which the body absorbs alcohol. Foods that are high in protein, such as meats and cheese, are especially good because they stay in the stomach longer.
- * When serving an alcohol punch, make it with a non-carbonated base. Alcohol is absorbed more quickly by the body when combined with a carbonated mixer, such as ginger ale. Try using fruit juice or tea as a base for party punches.
- * Provide several jiggers at the bar, so mixed drinks can be measured. At an informal party, guests often mix their own drinks. If a jigger is handy, they are more likely to use it than "guess" at what seems to be the "right amount."
- * Don't force drinks on your guests. Under normal circumstances, the body metabolizes approximately one drink per 1½ hours. Although you want your guests to enjoy themselves, you don't want them to over do it. Don't rush to refill glasses as soon as they are empty. Many guests may accept drinks they'd rather not have to avoid appearing rude to their host or hostess.
- * Offer nonalcoholic beverages at your party. About 1/3 of the adult population chooses not to drink at all. Many people like to have one or two drinks during an evening, but no more. Others choose to drink on one occasion, but not another. When someone says "No thanks, . . ." don't push it. There are approximately ten million Americans for whom even one drink is too many. Have nonalcoholic drinks available.

* Finally, if guests drink too much, don't let them drive. Provide transportation or persuade them to stay until they can get home safely. As a host or hostess, you can play an important part in the prevention of drunk driving.

The Community Health Nurses wish you a happy and **safe** holiday season.

RECIPES FOR NON-ALCOHOLIC DRINKS

Note: The "jigger" is used as standard measurement in many of the mixed drink recipes. A jigger is usually one and one-half ounces of liquid. You may use less or more, depending on how large a drink you wish to make.

"Bitters," an ingredient in some of the mixed drinks, does contain alcohol. It takes 72 dashes of bitters to equal 1/2 oz. of alcohol. The bitters may be omitted.

*****SWEET DRINKS*****

MEXICAN SUNSET (1 serving)

1 cup chilled orange juice
1/2 jigger grenadine

Pour the orange juice into a tall glass. Add grenadine and allow to settle on bottom. May be served over ice.

□ □ □ □ □ □ □ □ □ □ □ □ □ □ □ □

SHIRLEY TEMPLE (1 serving)

1 serving of ginger ale or 7-up
1 jigger or grenadine

Fill highball or old-fashioned glass with ice cubes and ginger ale or 7-up. Add grenadine. Garnish with orange slice and cherry.

□ □ □ □ □ □ □ □ □ □ □ □ □ □ □ □

PINA COLADA PERFECTO

1 jigger creme of coconut
2 jiggers pineapple juice
1 1/2 jiggers club soda

Mix over ice.

Wisconsin Public Service Corporation

Eligibility Requirements for Weatherization Program

Number in Household

1
2
3
4
5
6
7
8

Income Level

\$ 7,875
\$ 10,575
\$ 13,275
\$ 15,975
\$ 18,675
\$ 21,375
\$ 24,075
\$ 26,775

To apply for the program please call the Wisconsin Public Service Office at 433-1444 and ask to speak with Lynn Hallada. She will ask you to provide the following information:

Proof-of-ownership of the property.

This can be documented by a copy of customer's Homestead Credit, Real Estate Tax Bill or Deed.

Verification of income can be achieved by calling the following agencies or by the customer's Tax Form, if they file taxes.

SOCIAL SECURITY OFFICE	433-3901
DEPARTMENT OF SOCIAL SERVICES	497-3500
HOUSING ALLOWANCE OFFICE	435-7561
YOUR SAVINGS (JUST INTEREST)	000-0000

We would like twelve months consumption, previous year works out the easiest.

I will be willing to help any customer get the information they need to apply for the program and make it as easy as possible. If you are unable to come and see me I will go to your home and fill out the application there.

Sincerely,

Lynn Hallada
Marketing Representative

600 North Adams • P.O. Box 19002 • Green Bay, WI 54307-9002



Oneida Rodeway "Tops" Out

FOR IMMEDIATE RELEASE

December 6, 1985

(ONEIDA, WI) — Ceremonies commemorating the topping out of the new Oneida Rodeway Inn across from Green Bay's Austin Straubel Airport, will be held at 3:30 P.M. Thursday, December 12, 1985. The ceremony comes 13 months to the day after ground was broken for the \$10.5-million three story structure.

Work on the project began in early spring with the clearing of the wooded site. Actual construction of the building began in June. The facility, expected to open in June of 1986, will contain 202 rooms, including 12 suites. One of the suites is a three room grouping called the Governor's Suite. It is expandable to five through the use of adjoining rooms. It and four other suites will contain gas log fireplaces.

The hotel is designed to primarily serve the commercial market (traveling businessmen) as well as conventions and business seminars. In addition, it will offer special weekend packages in conjunction with Oneida bingo, located in the Irene Moore Activity Center, immediately adjacent to the Oneida Rodeway Inn site.

The topping out ceremonies will be highlighted by the raising of a lighted Christmas tree to the roof of the center of the hotel (54 feet or approximately five stories high.) Normally, topping out ceremonies are a ritual reserved for skyscrapers. However, the ceremony is appropriate in this case since the Oneida Rodeway Inn will be the tallest building on Oneida Tribal lands. It is expected that the hotel will be a major element of the Tribe's continuing economic development.

A very brief outdoor ceremony is planned in front of the building, after which participants will move inside the partially completed structure for refreshments and tours of the hotel's first floor. Various community leaders and Tribal members have been invited to the event.

Speakers will include Oneida Tribal Chairman Purcell Powless; Tribal Economic Development Director and Hotel Corporation President Bruce King; Charles Kinsley, President of Geupel Demars, Indianapolis, IN, co-developer of the project; and Guy Begent, Regional Vice-President of Rodeway Inns, Dallas, TX.

by Charles Leonard, Tribal Public Relations Consultant



Irene Moore Activity Center

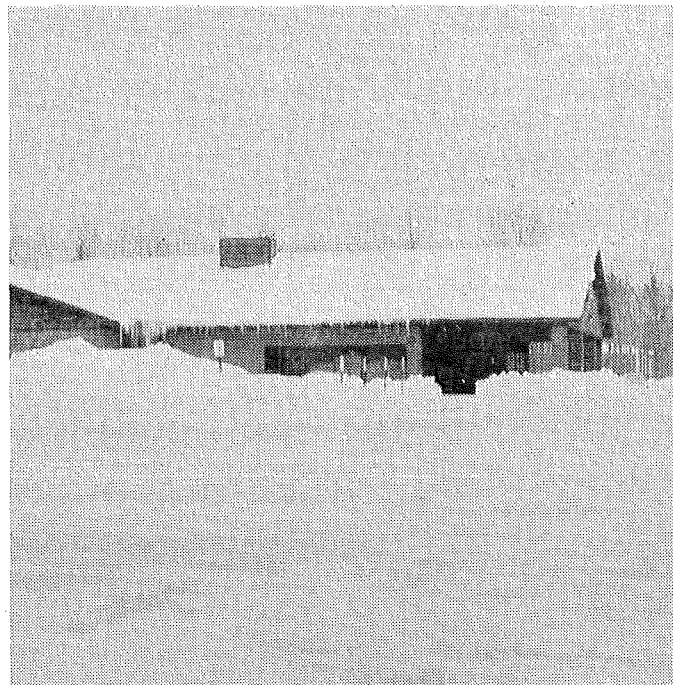
The beautiful Irene Moore Activity Center (IMAC) is located in a scenic woodland setting on original Tribal Lands pursuant to an 1838 Treaty, on Airport Road, County Trunk GG across from Austin Straubel Airport in Brown County. Construction on the Center began in the fall of 1982 with revenues generated by the Oneida Tribal Enterprises, primarily Oneida Bingo. The unique facility was completed in April 1983 and at this time the building was dedicated to a distinguished Tribal Elder, Irene Moore, who was the first Oneida woman to hold the position of Chairperson for the Oneida Nation.

At this point IMAC houses 4 operations, the Bingo Activity, a food service & giftshop operation and a tobacco outlet operated co-operatively with the Tobacco Enterprise.

The IMAC is a facility open to accommodate other tribal functions in addition to those previously mentioned. The IMAC has hosted Tribal Meetings, receptions, large dinner parties, and Community informational meetings.

With the revenues generated by the activities and operations of IMAC, the Oneida Tribe is able to finance and subsidize approximately 27 Tribal Programs, to name a few — Oneida Recreation, Oneida Nursing Home, Oneida Tribal School and Headstart, Plant Management, Oneida Cannery, Commission on Aging and a Tribal Public Safety Department.

The manager Sandra Ninham and Assistant Manager Alma Webster began the Bingo operation as volunteers in the fall of 1976, beginning in a gymnasium with additional volunteer help from their families to run bingo one night a week. Since that time the operation outgrew the small gymnasium and now consumes a facility of approximately 30,000 sq. ft. The IMAC is currently open seven days a week and employs approximately 124 workers in areas of tobacco & Bingo sales, Maintenance, parking lot attendants, food service workers, giftshop sales persons, callers, floor workers, security, supervisors, and management.



Arleen Elm

Benefit Advocate

ONEIDA COMMISSION

ON AGING

12 to 4:30 p.m. M-F

869-2448

Service for Elderly Housing, SSI,
Medicare, Supplementary Ins.,
Veterans Adm. Papers

Oneida Community Cannery

Norbert Hill Center, Room 1144

Indian Corn — \$2.75 qt.
Jams & Jellys — \$1.50 ½ pt.
Apple Butter, Blackberry Jam, Apple Jelly

We will take your orders
to make corn soup & cornbread
for Christmas

Call for more information — 869-2737
Canning info available
Monday — Friday
Open 8:00 A.M. — 4:30 P.M.
Closed Dec. 25th thru Jan 3rd, 1986

Senior Energy Aide

Contact Hazel Sommers
Location: Multi-Purpose Center
Hours: 12:00 - 4:00
Call 869-2448

Thrift N' Gift House

Off E on S County Line Road
Open 12 to 5 Tues, through Sat.
or call Ruth at 869-2171
For Sale: White Corn and Wood

ATTENTION

Hunter Safety classes will be made available when we get an enrollment of 7 (seven) or more youth.

To register for classes call Oneida Conservation Department at 869-1420

(ONLY youth ages 12 and older)

Carol's Cannery's Favorite X-Mas Cookies

1 c. solid shortening
1 c. sugar
3 eggs
½ tsp. salt
Beat until creamy
Add 3 c. flour
2 tsp. cream of tartar
1 tsp. Baking soda
1 tsp. Vanilla

Mix until well-blended, Chill 1 hour. Roll out on floured board. Cut out & bake. 10-12 min. at 350°, let cool and decorate.

Birthdays

Shantelle Le Beau, 1 year old.
love from your Gramma Charlene "Elsie"
Cornelius

Happy Birthday to Stacey Danforth on Nov-
ember 26th.

Happy Golden Birthday Loretta Hill, Dec. 13th.
from Mom and Slab

Happy Golden Birthday Loretta, December 13.
from Amanda and Kenny

Happy Birthday Audrey Funmaker "25".

Happy Birthday Commanche Pecore "4".

Happy Birthday Don Webster, December 7th.

Happy Birthday Gina Powless, December 17th.

Belated Birthday to Tom Jerome Pecore.
from Son Commanche

Births

November 23rd, welcome a new grandson to
Sky. Baby "Sky" comes from Sedro Wolly, WA.

Welcome a new baby brother to Chad Doxtator,
Mom and Dad are Gerald and Brenda! Baby
brothers name is "Eric Eastman Doxtator".

Anniversaries

Happy 50th Anniversary Ma & Pa (Hilton and
Verna Charles) December 18th, 1985.

We love you; God Bless you, your Kids

Happy 30th Anniversary on December 17th,
1985. Mom and Dad.

Love you, Vinnie

Happy Anniversary Joe and Helen Webster
December 31, 1985 # "30", Wish you the best!

Happy 40th Anniversary to Angie and the
"Chief". Keep him going Angie!

From "One Away"

Congratulations

Congratulations to Stephan Danforth who shot
his first deer at 8 am on opening day while
hunting with his grandpa, Leland.

Memoriam

In loving memory of Carolyn Metoxen who
joined the Great Spirit 7 years ago Jan. 1, at the
young age of 20.

I cannot express the special qualities which
made Carolyn such a joy to us and such a
comfort to so many others. In her memory there
is courage, as well as sadness. In the worst of
difficulties she endured in her short life she
never gave in to dispair, these words though fail
to convey the strength and beauty of this free
spirited girl.

Sadly missed by Grandma Prudy Doxtator &
Family

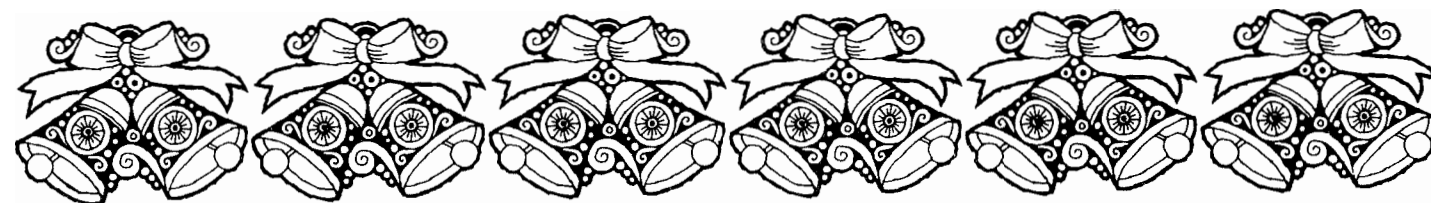
***"Remember" 1 issue in January
1986, Deadline Jan. 10th.***



Oneida Public Safety Department Officers Sworn In

Approximately 100 people witnessed a historical event for the Oneida Tribe, at the Norbert Hill Center, December 9th, 1985; the Oneida Tribe formally swore in the Chief of Public Safety and 13 additional Security Officers in a ceremony conducted by Sharon House Cornelius, Oneida Tribal Attorney. Among other law enforcement agencies in attendance were, representatives from the Menominee Tribal Police, Brown and Outagamie County Sheriff's Departments and the Ashwaubenon Public Safety Department. The ceremonies opened with a traditional Oneida prayer of thanksgiving which was offered by an honored Oneida elder, Amos Christjohn, followed by a warm welcome from Vice-Chairman Richard G. Hill, at which time he emphasized the major importance of the Public Safety Department. The formalizing of the Oneida Tribe's Department of Public Safety is "not to disrupt present security protection, but to compliment what's already in effect", Richard went on to say "as the Oneida Tribe takes on more responsibilities it is imperative that we get involved with this type of department for the general welfare and safety for all our Tribal members and neighbors of the Oneida Community."

Tribal Attorney Gerald L. Hill reflected upon some of the history behind developing the Department of Public Safety. Originally the Oneida Bingo Operation initiated the need for Tribal Security over its operations. It was at this time the Oneida Tribe employed top professional Police Officers from Brown and Outagamie County Sheriff's Departments, which eventually led to the training of additional Security Officers and developed into the present Public Safety Department. Each of these Officers have completed an accredited training program in Police Science.



Prior to the formal Swearing-In, James L. Danforth, Chief of Public Safety, took an opportunity to voice his appreciation for all who have assisted in the development of the Department. Among those mentioned were: Representatives from Brown and Outagamie County Sheriff's Departments, Ashwaubenon Public Safety Department, and most importantly, the Oneida Business Committee, Oneida Law Department and Tribal Law Enforcement Officers. In closing, James added, "The Oneida Public Safety Department will need the cooperation and help from the adjoining County Sheriff's Departments to successfully serve the people. The most important thing I want to relate to the community is that I and my staff will treat everyone who comes to us with great respect; Public Relations is going to be one of our number one goals."



Following an introduction of the entire Public Safety Department, all Officers were formally sworn-in by Tribal Attorney Sharon House Cornelius. Congratulations were exchanged and a dinner of Venison Stew was shared by everyone.



The Oneida Public Safety Officers are as follows: Chief of Public Safety, James L. Danforth; Senior Conservation Warden, Terry Jordan; Assistant Conservation Warden, Ralph L. Powless, *Dennis G. Powless, a 13 year veteran of the Outagamie Sheriff's Department; *Weldon Ted Hawk, an 11 year veteran of the Brown County Sheriff's Department; *William Saur, a 12 year veteran of the Brown County Sheriff's Department; *Gary Ness, a 6 year veteran of the Ashwaubenon Public Safety Department; and Tribal Security Officers: Vern Doxtator, Steve Hill, Ronald E. King, Susan R. Posypachala, Jeffery Prevost, Phillip Skenandore and Mark Stanchik.

* These Officers are currently employed by the Sheriff's Departments in both counties as well as the Oneida Public Safety Department.

UPCOMING EVENTS AT THE WILDLIFE SANCTUARY

DECEMBER	■	DECEMBER	■	DECEMBER
1	2PM	Reptiles and Amphibians Program		
5	7PM	Furbearers of Wis. Waterways Series (Muskrat, Otter, Mink)		
7	8AM-4PM	Friends bird seed pickup		
	10AM & 1:30PM	Making Green Wreaths Workshops		
8	10AM-3PM	Friends bird seed pickup		
	2PM	Mammals of Wisconsin Program		
9	1PM	Animal stories for Preschoolers		
13	8PM	The Coming of Comet Halley		
14	11AM-4PM	Christmas Wildlife Art Festival		
15	2PM	Hunters of the Sky Program		
18	6:30 PM	Wildlife Sanctuary Photo Club		
22	2PM	Life of Bobcat Program		
25		MERRY CHRISTMAS TO ALL !!		
28	7PM	Walk When the Moon is Full		
29	2PM	Reptiles and Amphibians Program		
JANUARY 1986	■	JANUARY 1986	■	JANUARY 1986
5	1-3PM	Winter Film Festival "Basics of Cross-Country Skiing" and Ski waxing Mini-Clinic		
11	10AM	Public Snowshoe Hike		
12	9AM-2PM	Beginners Taxidermy Workshop		
	1-3PM	Winter Film Festival "Hawks" and The Broadwing Hawk Program		
14	1PM	Animal Stories for Preschoolers		
16	7PM	Friends of the Sanctuary Annual Meeting		
17	1PM	Animal Stories for Preschoolers		
18	9AM-5PM	Snowshoeing in Door County		
19	1-3PM	Winter Film Festival "Animal Populations" and Wild Friends Program		
24	4:30-9PM	Project Wild-Workshop for Teachers K-6th Grades		
25	10AM	Public Snowshoe Hike		
	9AM-3PM	Project Wild Workshop (con'd.)		
	7PM	Snowshoeing When the Moon is Full		
26	1-3PM	Winter Film Festival "Water Planet" and Amphibians of Wisconsin Program		
27		Last day to order bird seed from "Friends"		
FEBRUARY	■	FEBRUARY	■	FEBRUARY
1	10AM-2PM	Ice Fishing Basics for Children		
	8AM-3PM	Bird Seed Pickup		
2	1-3PM	Winter Film Festival "The Last Stronghold of the Eagles" and Birds of Prey Program		
	10AM-4PM	Bird Seed Pickup		
8	all day	Friends of the Sanctuary Winter Family Fun Day (alt. day 2/15)		
9	1-3PM	Winter Film Festival "Night of the Sun" & Wis. Ice Age Trail Program		
11	1PM	Animal Stories for Preschoolers		
14	1PM	Animal Stories for Preschoolers (repeat)		
16	1-3PM	Winter Film Festival "Flight to Survival" & Wis. Crane Program		
22	10AM	Public Snowshoe Hike		
23	1-3PM	Winter Film Festival "The Wisconsin Forest" and Wis. Whitetails Program		
24	7PM	Ski When the Moon is Full		

★ ★ ★ ★ ★ ★ ★ ★ ★ ★ ★ ★ ★ ★ ★
All of these programs and many others are offered on a regular basis at the Wildlife Sanctuary. Please call 497-6084 for more information and to register for programs.

Sponsored by
Green Bay Park and Recreation Department

PERSONNEL OFFICE
Oneida Tribe of Indians of Wisconsin
Job Description

POSITION: Secretary (Part-Time)
LOCATION: Oneida Headstart — Norbert Hill Center
RESPONSIBLE TO: Headstart Director
SALARY: Grade 8 \$5.15/Hr.
ISSUING DATE: December 12, 1985 **CLOSING DATE:** December 22, 1985

Equal Employment Opportunity Statement

The Oneida Tribe of Indians of Wisconsin does not discriminate on the basis of race, color, national origin, sex, religion, age and handicapped status in employment or the provision of services. However, individuals of Indian ancestry will be given preference by law in initial employment or re-employment.

Applications/Resumes Shall be Submitted To:

Personnel Office
Oneida Tribe of Indians of Wisconsin
P.O. Box 365
Oneida, WI 54155

Duties & Responsibilities:

1. Types letters, memos, reports and forms.
2. Sorts, indexes and files records and materials relevant to the Headstart Program.
3. Acts as receptionist, answering phones, taking messages.
4. Composes routine replies to general inquiries and correspondence.
5. Compiles data and information for reports.
6. Prepares vouchers, and maintains related records.
7. Checks Profits and Loss Statements and weekly printouts for accuracy.
8. Completes monthly DPI Food Report.
9. Maintains strict confidentiality in all personnel matters.
10. Does other job related duties as assigned.

QUALIFICATIONS

1. High School Diploma or GED required.
2. Good Knowledge of office practices and procedures, terminology, and equipment.
3. Typing skills, minimum of 50 wpm accurately, test required.
4. Knowledge of Business Math and English.
5. Ability to keep accurate, up-to-date records and files.
6. Ability to plan, organize, and schedule priorities effectively.
7. One year clerical experience required.

**Tribes Will Vote On Distribution Formula
for Johnson O'Malley Funds:**

Acting Deputy Assistant Secretary Hazel Elbert asked tribal and Alaska Native leaders in a letter dated November 14 to vote on a revision of the formula for the distribution of Johnson O'Malley (JOM) funds. JOM funds are used for special programs for Indian students attending public schools. In her letter, Elbert listed seven formula options. The tribes and Alaska villages have 60 days in which to vote, beginning December 3 and ending January 31. Revision of the formula is required periodically by Public Law 95-561. Many tribes and villages have presented comments and recommendations about changes in the distribution formula. The present formula is based in part on what the state spends per pupil for education — which tends to give the states spending more a greater share of the JOM funds. "Many tribes feel there is a need for a more equitable distribution of funds," said a Bureau of Indian Affairs education spokesman. Consultations about the formula were held with tribes last summer. All tribes and Alaska Native villages are allowed one vote. Some of the larger tribes consider this unfair since the smallest tribe has the same influence as the largest. For more information about the options and the voting procedure contact Maribel Printup, BIA Office of Education Programs, Washington, D.C., at (202/343-6364).

Press Release

TO: ALL MEDIA
FROM: STATE REPRESENTATIVE SHARON METZ
RE: LIEUTENANT GOVERNORSHIP
DATE: NOVEMBER 25, 1985

State Representative Sharon Metz, D-Green Bay, today announced her intention to seek the Democratic nomination for Lieutenant Governor in 1986.

She announced in Green Bay, Milwaukee, Madison, Mosinee and Eau Claire. A copy of her announcement speech is enclosed. Rep. Metz is the first woman from any major party in Wisconsin to announce her intention to run for this position.

Rep. Sharon Metz
118 West, State Capitol
Madison, WI 53702
(608) 266-5840

Ken Strasma, Campaign Mgr.
408 N. Henry #J1
Madison, WI 53703
(608) 251-2975

* Editor's Note — Announcement speech available in Kalihwisaks office.

The Fourth Annual Grandparent Feast

Grandmothers, Grandfathers, Great Grandmothers, Great Grandfathers began to arrive at the two Head Start Centers at 11:30 on Tuesday, November 22 for the Fourth Annual Head Start Grandparent Feast.

They came with their invitations in their hand and their symbol which would tell them where they were to go. In Oneida, the grandparents carried the symbols of Earth Mother, Grandfather Thunderer, and Grandmother Moon and Elder Brother Sun — the four elements that we need to grow our food.

Special beaded feathers were ready for honoring the Great Grandmother of Damon Skenandore and Justyn Metoxen, Mrs. Mary Clark, who, at 93 years was the oldest Grandmother; Simon Moore, at 84 years and the Great Grandfather of Joey Powless and Vanessa King was the oldest Grandfather. Youngest Grandparent recipients were Johnathan Stevens' Grandmother, Patricia Huff, and Sara Smith's Grandfather Ronnie John, both a "tender" 43 years.

Celisha Metoxen and Allen Webster's grandparents Yvone Metoxen and Tony and Levinia Webster came the farthest traveling from South Milwaukee.

Traditional foods, or those that were given to the world by the Native American people, were served: squash, pumpkin pies, cranberry, corn soup, wild rice, fry bread and venison, along with turkey were served at the two Centers, along with the traditional Fall Drink of Blackberries. Many people helped make this day a great success, including the new Oneida Conservation officers who were able to get us enough venison to satisfy everyone. Ann Skenandore donated both corn and wild rice.

Parents and Head Start Staff donated supplies, desserts, and a great deal of time either cooking, setting up, or cleaning up following the feast.

On Sunday, Gordie and Betty McLester prepared one deer for roasts and stew; Monday morning, Mark Powless, father of Joey Powless, responded to the emergency of the second deer, returning within hours with more roasts and stew meat to be cooked by parents and staff people.

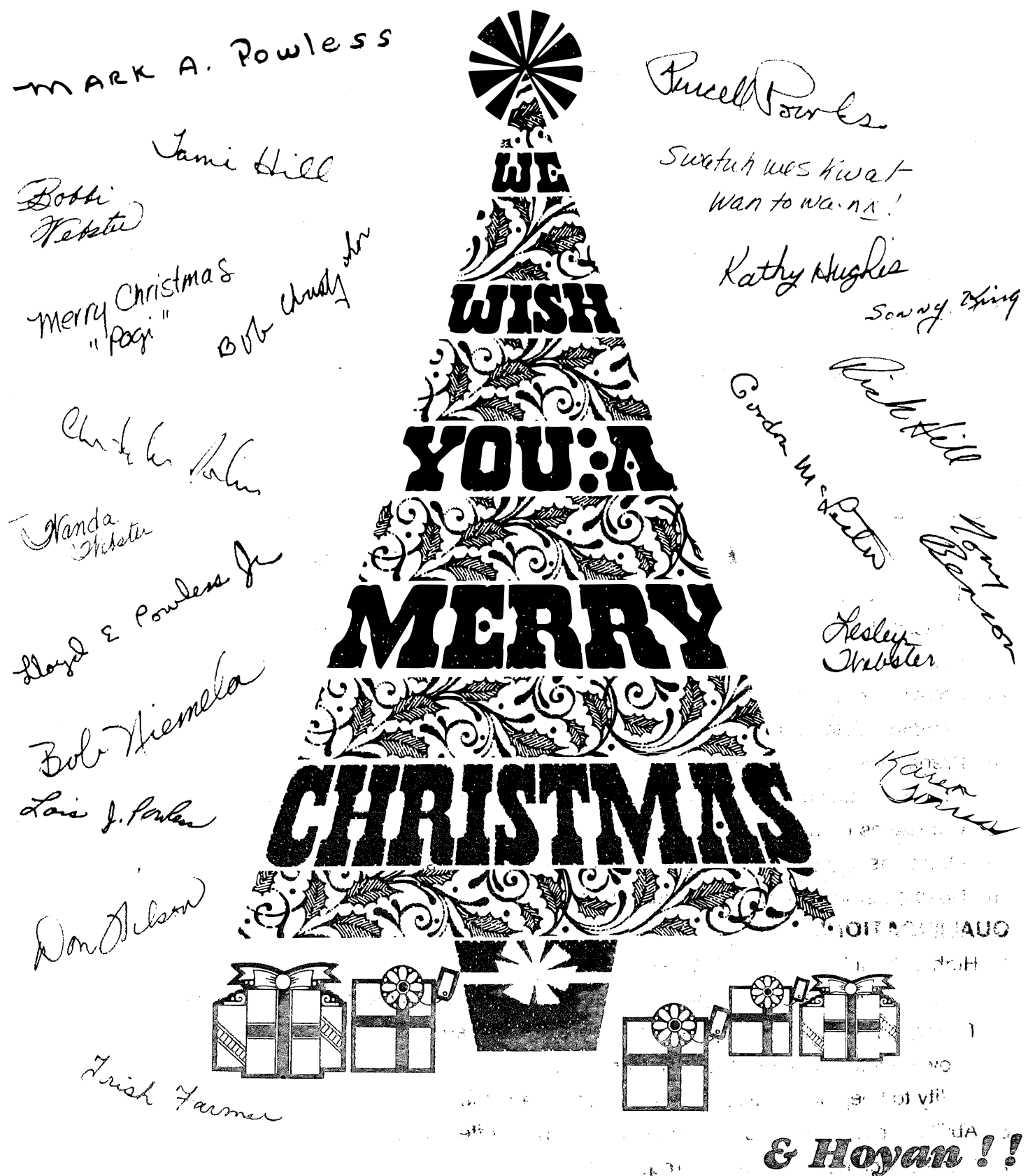
We are grateful to all of those who helped us have this wonderful day with the Grandparents: Cecilia Adams, who allowed us to use her roaster and then donated it to Head Start, Grandparents, Carol Elm and Gordie and Betty McLester, and all of the Parents: Vicky Reed, Lennette White, Shelly Skenandore, Bev Anderson, Joan King, Laura Cornelius, Helen Teller, Gail Ellis, Joanne Skenandore, Debbie Skenandore, Mary Webster, Corinne Zhuckkahoese, Grace Koehler, Deb Wisneski, Vange Danforth, Sherry King, Diane Thorstenson, Sandie Hill, Debbie Powles, Mark Powless, Cheryl VandenBerg, Judy Stenens, Inez Skenandore, Ginna Johnson, Patsy White, Anita Barber, Sharon Cornelius, Debbie Doxtator, Sue Koepke, Louise King, Celene Elm, Margaret Cornelius, Vicki Cornelius, Nancy Metoxen, Cathy Metoxen, Rae Ann Porter, Claudia Danforth, Doreen Reed, Barbara Hill-Hawkins in Oneida.

In Green Bay, the volunteers who made that Center's feast a success were: Bob and Luann Balza, Cally King, Wendy Maskewit, Ann Skenandore, Barbara Maresh, Phyllis Torrez, Faye Stevens, Joyce Hill and Kathy Fields. Cub Foods and Tri-Star Gas Station both made donations. Phyllis Torrez and Sandy Ninham served as "proxy grandmas" for 2 children. Debby Herrera arrived at the Center with 20 Pumpkin Pies, and 9 containers of Kool Whip to top it off!

The time flew by quickly and smoothly because of all these people who volunteered to help; The NHC kitchen and maintenance staff were also a big help for the success of the day.

But most of all, it was Head Start Staff themselves who made the day a tremendous success, as they worked with the children of the Fall season to prepare them for this event.

Merry Christmas to All from Everyone in The Business Committee Wing of the Norbert Hill Center



Shakopee Mdewakanton Sioux Community

Dear Arts Advocate:

The Shakopee Mdewakanton Sioux Community would like to invite all Native American students in K-12 to participate in their Native American Student Arts Exhibition. This non-juried exhibition will be the first in our Cultural Center. An opening reception is planned for January 31st from 3:00 p.m. -5:00 p.m. and the exhibition will run through February 14th.

We would like to recognize our young artists as well as increase art appreciation and cultural awareness in youth. Please help us by encouraging participation from the students. It may be their first exhibition experience and we'd like to have a good turnout. All participants will receive a certificate and special invitations for their family and friends.

Art work must be two dimensional and matted. (Preferably not framed in glass though, because of possibility of damage in mailing.) All works should be sent directly to Judy Nygard Broekemeier, Exhibition Coordinator, 2330 Sioux Trail N.W., Prior Lake, Minnesota 55372.

Upon closing the show, all works will be sent back UPS or Parcel Post **collect**. Please specify which you prefer on the application blank below which needs to be attached to the back of the art work.

We will need the art work by January 10th at the latest, so make sure you allow enough mailing time, or that you drop it off by that date.

Call 445-8900 with questions or 447-3524 after 5:00 p.m.

Our thanks for your help with this endeavor . . . we hope for an enriching arts experience for all!

Sincerely,
Susan Totenhagen
Tribal Chairperson
Shakopee Mdewakanton Sioux Community

Native American Student Art Exhibition January 31 - February 14

Artist _____

Age _____ Grade _____

School _____ District _____

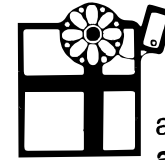
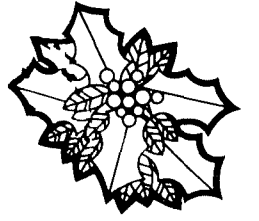
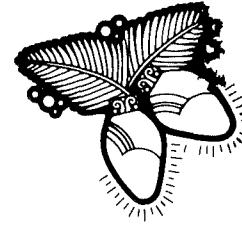
Address _____

Send Art Back via (circle One): UPS Parcel Post

Title of Work _____

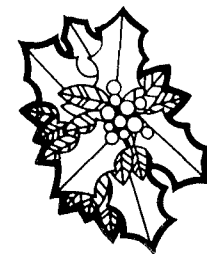
I understand that the Cultural Center will make all provisions to keep the art work safe during the exhibition but is not responsible for lost or damaged work.

Signature _____




Christmas is a time of year we all think of spending with our families and also a special time of the year for sharing festivities in our homes, entertaining and decorating. The residents of the Anna John Nursing Home also share in the joys of the holiday season. On Friday, December 13, they spent the afternoon decorating their lounge and trimming their Christmas Tree. Each resident has an ornament to contribute to their very special tree, their ornaments came from their families, and are kept by the staff to decorate the tree for the years to come. After Tree Trimming everyone was served coffee and Christmas Cookies. If you are interested in volunteer work at the Anna John Nursing home please feel free to take a tour through the home and meet the residents and staff, contact Lynne Collins for more volunteer information.

A Very Merry Christmas From The Anna John Nursing Home!



Activity Schedule, month of December, 1985

Sunday	Monday	Tuesday	Wednesday	Thursday	Friday	Saturday
9:00 Catholic Communion 2:00 Oneida Singers 6:00 Church	9:00 Coffee Social 10:00 Crafts 1:00 Bus Ride 3:00 Episcopal Mass	10:30 Outing Methodist Church 10:45 M&M 2:00 Bingo 6:30 Puppet Show	9:30 Movement & Music 12:30 Shopping to East Town Mall 6:00 Church 6:30 Ceramics	9:00 Open Crafts 1:00 Resident Council	9:30 Bible Study 10:30 Crafts 1:15 Catholic Mass	
9:00 Catholic Communion	9:30 Salvation Army 10:30 Coffee 1:00 Bus Ride 3:00 Episcopal Mass Everett Williams B-Day	10:30 Outing Methodist Church 10:45 M&M 2:00 Bingo	9:30 Movement & Music 1:00 Beauty Boutique 6:00 Church 6:30 Ceramics	9:00 Open Crafts 12:00 Out to Lunch! 4:30 Hobart Country Crickets	9:30 Bible Study 10:30 Crafts 1:00 Trim The Tree /Dining Room Immaculate Conception Children's Choir	10:00 St. Ann's Children's Choir/Dining Room
9:00 Catholic Communion 6:00 Church	9:00 Coffee Social 10:00 Crafts 1:00 Bus Ride 3:00 Episcopal Mass	10:30 Outing Methodist Church Christmas Party 10:45 M&M 2:00 Bingo	9:30 Movement & Music 2:00 Johnny Len 6:00 Church 6:30 Ceramics	9:00 Frost X-Mas Cookies 1:00 Catholic Mass 2:00 Movie: White X-Mas with Bing Crosby & Danny Kaye	9:30 Bible Study 10:30 St. Joseph's X-Mas Program 1:30 Film: X-Mas	
9:00 Catholic Communion 6:00 Church	9:00 Coffee Social 10:00 Crafts 2:00 Bingo	10:00 X-mas Party — Santa Claus! 3:00 Episcopal Mass	CHRISTMAS DAY! 		9:30 Bible Study	
9:00 Catholic Communion 6:00 Church	9:00 Coffee Social 3:00 Episcopal Mass	10:30 Outing Methodist Church 2:00 Monthly Birthday Party and Bingo				

1985-86 Womens' Volleyball Rules

1. Ten girls are allowed on each roster.
2. There is a \$10.00 fee for each player. Fee must be paid or team forfeits each game that person plays.
3. Games are to start promptly at 6:00 and 7:15. There will be a 15 minute waiting period. After 15 minutes team forfeits. After 5 minutes second and third game is forfeited.
4. Each team must start with 4 girls — NO LESS!
5. Teams with a bye must furnish two referees for both matches.
6. A player added on 1 week before playing must also pay their fee **when** added.
7. Rosters may be changed at half time, after January 21, 1986.
8. There will be a 3 minute break between games.
9. There will be 3 time outs per game.
10. Upon volleying for serve the ball must go over the net 3 times.
11. When ball hits net on serve, the serve will be lost.
12. Any player on net will lose ball.
13. Any player crossing over the center line with hand(s) or feet will lose ball.
14. Bringing young children/babies is strongly discouraged. Please try not to bring them due to accidents, interference of game & stopping a game for crying children. Parents will be responsible for children's actions who they bring to the games.

Women's Volleyball Schedule

	Dec. 10	Dec. 17	Dec. 24	Dec. 31
8:00	1 vs. 3	1 vs. 4	No games	No games
9:15	2 vs. 5	2 vs. 3	Happy Holidays!!	Happy Holidays!!
(only this game)	4 Bye*	5 Bye*		
	Jan. 7	Jan. 14	Jan. 21	Jan. 28
6:00	1 vs. 2	1 vs. 5	2 vs. 4	1 vs. 3
7:15	4 vs. 5	3 vs. 4	3 vs. 5	2 vs. 5
	3 Bye*	2 Bye*	1 Bye*	4 Bye*
	Feb. 4	Feb. 11	Feb. 18	Feb. 25
6:00	1 vs. 4	1 vs. 2	1 vs. 5	2 vs. 4
7:15	2 vs. 3	4 vs. 5	3 vs. 4	3 vs. 5
	5 Bye*	3 Bye*	2 Bye*	1 Bye*

*All teams who have a Bye **Must** furnish referees for that nights games!

January 21, is the half time.

Fort Lewis College **ANNOUNCEMENT**

Enhancing Opportunities for Indians in the Health Professions

Fort Lewis College, in conjunction with the Association of American Indian Physicians and the University of Arizona College of medicine, is organizing a conference to be held on the Fort Lewis College campus in Durango, Colorado, on May 24, 25 and 26, 1986. The objective of the conference is three-fold: 1) to identify and discuss those major problems, both cultural and educational, that confront Indian students at each level of preparation (secondary school, college and professional school); 2) to propose strategies that will address these problems; and 3) to develop a network to improve communications and provide support systems for Indian students in Health Professions tracks.

We plan to bring together representatives from Tribal Education Offices, High School counselors, College faculty and admissions officers and Professional School representatives. A.A.I.P. will present its spring Pre-Admission Workshop during this Conference and the A.A.M.C. Office of Minority Affairs will conduct a Simulated Minority Admission Exercise as well.

Conferees will reside in dormitory facilities and meals will be available at cafeterias on campus with costs being subsidized by conference sponsors. The site of the Conference was carefully selected to allow participants an opportunity to work together in an environment and campus committed to quality education for Indian students. Fort Lewis is located in the Four Corners Region and provides services to several major Indian reservations in Colorado and adjacent states.

We hope that you will mark down these dates before your calendar gets filled and plan to join us for a productive encounter.

In early 1986, you will receive an additional mailing that will include a tentative schedule of events and a registration packet. Please give this matter your prime attention so that we may reserve a spot for you early since the conference will be limited to 200 participants.

In the meantime, if you should like further information, please contact any of the co-coordinators below.

Thank you for your consideration and cooperation.

Sincerely,

John E. Dever, Jr., Ph.D.
Program Director
Minorities in Health
Careers (HCOP)
Fort Lewis College
Durango, CO 81301
(303) 247-7995

Terry Hunter
Executive Director
Association of American
Indian Physicians, Inc.
6805 S. Western
Suite 504
Oklahoma City, OK 73139
(405) 631-0447

Andrew M. Goldner, Ph.D.
Associate Dean
University of Arizona
College of Medicine
Tucson, AZ 85724
(602) 626-6216

Diagnosis of Periodontal Disease (Gum Disease)

If you do not see your dentist regularly, you may not realize that you have periodontal disease until irreversible damage has been done to your gums and the bone around your teeth. This is because the disease usually progresses slowly, over the course of many years, without causing any special discomfort. Discomfort can occur, however in the later stages of the disease. So don't wait until it hurts!

During checkups, your dentist will examine your gums to see if you have any periodontal problems. Dental radiographs (xrays) will aid in the diagnosis.

You can help your dentist — and yourself — in your fight against periodontal disease by learning its warning signs. If you notice any of the following signs, see your dentist immediately:

1. Gums that bleed when you brush your teeth
2. Gums that are red, swollen or tender
3. Gums that have pulled away from the teeth
4. Pus between the teeth and gums when the gums are pressed
5. Permanent teeth that are loose or separating
6. Any change in the way your teeth fit together when you bite
7. Any changes in the fit of your partial dentures
8. Bad breath

More information will be provided next month as to the extent of gum disease within the Native American community and the steps that are taken by our dental team to aid you in obtaining optimal oral health.

DON'T WAIT TILL IT HURTS is a publication of the American Dental Association and copies are available at the Oneida Health Center dental clinic. Please stop in for additional information.

MICHAEL P. LEWITZKE, D.D.S.
Dental Director

HENRI OUDENHOVEN, C.D.A.
Dental Auxilliary Supervisor

Parent Support Group Meetings

EVERY MONDAY EVENING at 6:00 p.m. at the
COMMUNITY BUILDING in Site II.

★ ★ ★ ★ ★

The Oneida Community Health Center wishes to thank RON PYTEL for his hard work and dedication to our community over the past SEVEN YEARS. Ron will be going to South Dakota and we hope his future is filled with only good happenings.

"Good Bye" wishes additionally extended to BRUCELYN CORNELIUS and VIC DOXTATOR.

★ ★ ★ ★ ★

Oneida Health Center WELCOMES:

SHERRY KING — Support & Prevention
Specialist

Sherry will be working specifically with women through the AODA services.

FLORENCE PETRI — Accts Control
Clerk

Florence is working in the Billing Department and comes to us with a degree in Accounting.

★ ★ ★ ★ ★

DEAR COMMUNITY MEMBERS:

Please provide reception with any insurance/ Medical Assistance information, address changes, or information changes that relate to you or your family. Current information is very important for us to keep up to date. We are studying the possibility of limiting paperwork for you, the patient, so that your Health needs will be taken care of in a more efficient manner.

Thank you,
Administration

COUNTY RESCUE is the ONLY authorized emergency rescue service contracted to provide coverage to the Oneida Reservation. Their phone number is 469-9777. If any other rescue service is called, payment of this service will be the responsibility of the patient or person concerned.

Clip & Post Near Phone

EMERGENCY UTILITY/WATER SUPPLY FAILURES after hours should be directed to 788-1991 OR 498-3182. PLEASE . . . DO NOT CALL these numbers if your septic system fails. These numbers are for water supply failure only.

WE ARE HERE TO SERVE OUR COMMUNITY. KEEPING NOTE OF THE ABOVE NUMBERS AND INFORMATION WILL ENABLE US TO CONTINUE SERVING YOU EFFICIENTLY.

A.A. MEETINGS

Every Wednesday at 7:00 in the kitchen of the Oneida Health Center. Every Thursday at 8:00 p.m. at the United Amerindian Ctr Outpost, 403 Kellogg St., Green Bay.

ALAnon & ALAteen MEETINGS

Every Wednesday at 7:00 p.m. in the Conference Room of the Oneida Health Center.

A.A., ALAnon, ALAteen, COMBINED MEETINGS

Every Friday at 7:00 p.m. in the Conference Room of the Oneida Health Center. Open meetings on the last Friday of the month.

EVERYONE WELCOME!

IF YOU NEED TO SPEAK TO A DR. AFTER HOURS:

You may call the Health Center (869-2711) and receive a recording which tells you to call our answering service 437-6007. When reached, the answering service will contact the "Dr. on call" for that day, and he or she will return your call. PLEASE MARK THIS PHONE NO. NEAR YOUR TELEPHONE.

CARBON MONOXIDE TESTING

Because of the threat that exists from the carbon monoxide poisoning from faulty gas heaters, the Oneida Health Center has obtained equipment to test your home for carbon monoxide gas.

Priority for testing will be given to mobile homes and to older homes with gas space heaters. If you would like your mobile home tested for carbon monoxide, contact John Spangberg at the Oneida Health Center. . .

869-2711

CARBON MONOXIDE POISONING

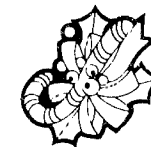
Carbon Monoxide is a colorless, odorless, poisonous gas that is left over when a gas heater is not operating properly, or in parked cars with the engine running and a faulty exhaust system.

Symptoms of carbon monoxide poison include sudden headaches, weariness or tiredness and dizziness, followed by nausea, vomiting and death. Often, victims of carbon monoxide just fall asleep and don't wake up.

To avoid carbon monoxide poisoning, you should have your gas heater or furnace inspected by a service technician each heating season, preferably before the start. To avoid carbon monoxide poisoning in your car, make sure your entire exhaust system is in good repair, avoid parking with the engine running when possible, and when you must park and leave the engine running — open the window part way to let fresh air in.

Special Wishes From "Anna"

Happy Birthday to
Lynn John
Trisha John
Kirk John, Dec. 25
Darrel John
Melinda Doxtator
And our Chief,
Purcell Powless, Dec. 25



A very Merry Christmas to my Mother, to all my children, grandchildren, and Great-Grandchildren, and to all my relatives near and far.

To Anna John Nursing Home Residents and our new Administrator, Whitney Mills, and his staff,

To Trust Committee Members

To Transportation Committee

To Oneida Reservation Commission on Aging & Staff & all elderly people,

To the Nutrition Program who have served our very special meals so faithfully, Mary, Althea and Arleen,

To Tribal School and Staff,

To Headstart and Staff,

To B.C. and all other Tribal Employees

MAY SANTA CLAUS BE VERY GOOD TO YOU AT X-MAS AND A HAPPY NEW YEAR TO ALL OF YOU
HOYAN



FROM ANNA

Dear Oneida Community:

The Oneida Branch Presidency of the Church of Jesus Christ of Latter Day Saints would like to extend its warmest greetings for the Christmas season. At this time, we would like to reaffirm to the Oneida Community our belief in Jesus Christ, and state, that He lives. From the Book of Mormon we know that Jesus Christ visited the Indian People of this hemisphere. Indian prophets predicted his birth and they watched for the signs in the heavens that would confirm his arrival here upon the earth. Not only did these Indian prophets predict his coming, but they also recorded his visit to the Indian people here in the America's.

Recently the Prophet of the Mormon Church stated that we believe in Christ. We accept and affirm His teachings as revealed truths from God. We know Him to be the literal Son of God. We love Him as our resurrected Lord and Savior.

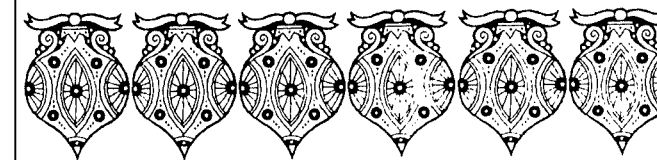
The Oneida Branch Presidency wishes to publicly state that Jesus Christ lives. Let us look beyond the commercialism of our Saviours birth, and remember that He lives.

Sincerely Yours,

Ira Cornelius,
President

John E. Powless, Jr.
First Councillor

John Koenigs
Second Councillor



Anna Jobn Nursing Home

Winner of both the raffle 24" pine cone wreath and the door prize "candle pine cone centerpiece" was Connie Metoxen. CONGRATULATIONS!

I would like to thank the VFW Auxillary Post 7784 for their help on Saturday, November 23, 1985. Woody Webster's singing and organ playing was enjoyed by all and the delightful banjo playing by Rhupart Adams was appreciated.

A special thanks to Yvonne & Frank Skenandore, Amelia Cornelius and Priscilla Manders for their generous donation of corn soup for our Craft & Bake Sale.

All donations of baked goods were also gratefully appreciated.

Proceeds from the successful Craft & Bake Sale will be used towards the purchase of a new TV for the Activity Room.

A special thanks to Van's Coral for the donation of the many flowers. They were appreciated by all and made lovely centerpieces.

Many, many thanks go to the family of Anna Demerath for their generous memorial donation to the Activity Department. This money will also be used toward the purchase of a TV for the Activity Department. Thank you, we are eternally grateful.

Lynne Collins — Activity Director

Turkey Throw Results

Turkey winners were, Jackie Wacek, Clarince Cornelius, Travis Smith, Terry Blackowl, Ema Schutz, Ralph Denny Jr., Lois Skenandore, Bertha Cornelius, Todd Van De Hei, Kathy Hughes, Jean King, Kathy King, Cary Danforth, Sandy Ories, and Mercie Cornelius.

We would also like to thank all those who sold squares on the turkey sheets. Your help was

greatly appreciated. THANK YOU !!! Arlene Benson, Ellie King, Stephanie Cornelius, Nori Damrow, Diana Denny, Tracey hill, Troy Hill, Rod Hill, Hanson Skenandore, Cliff Webster, Marie Scott, Cathy Delgado, Sonny King, and Curt Danforth.

A special thanks to all who signed up.

Oneida Recreation

Attention — All Patients of the Optical Clinic of the Oneida Health Center:

The two calendars shown here reflect Dr. Marcin's schedule for the remaining month of DECEMBER and for JANUARY of 1986.

Please make note of the change in times and dates that Dr. Marcin will be at the clinic.

The January issue of Kali?Wisaks will have new calendars for FEBRUARY and MARCH.

DECEMBER				
M	T	W	TH	F
16	17	18 DR. IS IN ALL DAY	19 DR. IS IN ALL DAY	20
23	24	25 MERRY XMAS! (CLOSED)	26 DR. IS IN ALL DAY	27
30	31 DR. IS IN MORNING ONLY			

JANUARY				
M	T	W	TH	F
		1 HAPPY NEW YEAR! (CLOSED)	2 DR. IS IN ALL DAY	3
6	7 DR. IS IN MORNING ONLY	8 DR. IS IN ALL DAY	9 DR. IS IN ALL DAY	10
13	14 DR. IS IN MORNING ONLY	15 NO DR. Open for adjustments fittings, or to make appointment	16 DR. IS IN IS IN ALL DAY	17
20	21 DR. IS IN MORNING ONLY	22 NO DR. Open for adjustments fittings, or to make appointment	23 DR. IS IN IS IN ALL DAY	24
27	28 DR. IS IN MORNING ONLY	29 NO DR. Open for adjustments fittings, or to make appointment	30 DR. IS IN IS IN ALL DAY	31

Two Scholarships Offered By

The American Congress on Surveying and Mapping and
The American Society of Photogrammetry

The Berntsen Scholarship in Surveying

The Berntsen Scholarship in Surveying was made possible by Berntsen, Inc. of Madison, Wisconsin.

PURPOSE

The purpose of the Scholarship is to provide financial assistance to a full-time undergraduate student pursuing a four-year degree in surveying.

ELIGIBILITY

Any person who is enrolled in a four-year degree program in surveying may apply for this scholarship. One scholarship may be awarded each year to the student who is judged to be the best qualified, and who will use the scholarship to continue his or her study in an accredited college or university in the year for which the scholarship was given. Previous holders of the scholarship are eligible to apply for the award in any succeeding year provided the other requirements of eligibility are satisfied.

APPLICATION

Applications are to be submitted to the Education Director, ACSM-ASP, for receipt by January 15, and must include: (1) a completed application form; (2) proof of enrollment in or acceptance by a college or university; (3) the applicant's plans for continuing his or her formal education; (4) a statement by the applicant of the reasons he or she merits the award; (5) records of academic performance and standing; and (6) four letters of recommendation at least three of which must be from faculty members.

SELECTION

Selection will be made by the ACSM-ASP Fellowship Committee. Selection will be based on appraisal of the applicant's (1) justification of award, (2) educational plan,

(3) academic performance and standing, (4) potential for development, and (5) financial need.

AWARD

The successful applicants will be notified of their selection by the Education Director of ACSM-ASP on or about February 15. The award will consist of a \$1,000 check to the recipient. The award will be presented at the Annual Convention of the ACSM-ASP, regularly held in March.

For more information and/or application, contact: Education Program, Attention: Berntsen Scholarship, 210 Little Falls Street, Falls Church, VA 22046.

The Schonstedt Scholarship in Surveying

This scholarship was made possible by a donation from the Schonstedt Instrument Company of Reston, Virginia.

The award is to be used for undergraduate study in surveying and will be made to a worthy student who has completed at least two years of a four-year curriculum leading to a degree in surveying.

Selection will be made on the basis of the applicant's educational and career plans, prior academic record, and recommendations of faculty members.

Application deadline is January 15. For more information and an application, write to: Education Program, Attention: Schonstedt Scholarship, 210 Little Falls Street, Falls Church, VA 22046.

—provided by the American Congress on Surveying and Mapping and the American Society of Photogrammetry.

*Submitted by Oneida Higher Education Offices

NATIONAL SCHOLARSHIPS IN BROADCASTING

presented by the NATIONAL ASSOCIATION OF BROADCASTERS in cooperation with the BROADCAST EDUCATION ASSOCIATION HONORING the dedicated service to broadcasting by—

HAROLD E. FELLOWS: Four annual scholarships in the amount of \$1,250 each, for study in any area of broadcasting.

WALTER PATTERSON: Two annual scholarships in the amount of \$1,250 each, for study toward a career in radio.

IN GENERAL
Scholarships will be awarded for a period of one scholastic year, normally two semesters or three quarters, for study in the junior or senior year, or for study in the Graduate School. Current scholarship holders are not eligible for reappointment in the year following their award. No sexual, racial or ethnic considerations. The applicant must, under any scholarship, pursue a course of study for a degree in a University or College which is an institutional member of the BEA.

BASES FOR SELECTION

There should be substantial evidence of superior academic performance and potential to be an outstanding contributor to the field. The candidate should be

able to communicate interest in the general field of Broadcasting. There should be evidence that the applicant has a high order of integrity and sense of responsibility.

NOTE: For the FELLOWS scholarship, the applicant must be (or have been) an employee of NAB member radio or TV stations or networks, OR must have engaged in a formal internship program for either academic credit or financial compensation at such stations or networks, OR must be a child of an employee of such stations or networks.

PROCEDURES FOR APPLICATION

The application form asks for personal data, academic, broadcast experience and other activity records, a written statement of goals, and written statements from references.

DEADLINE FOR APPLICATION

January 15. Winners will be announced at the annual (spring) meeting of the Broadcast Education Association. Procure an application form from: Prof. Bruce A. Linton; Scholarship Chairman, BEA; Stauffer-Flint Hall; University of Kansas; Lawrence, Kansas 66045

Northwest Missouri State University

New Mathematics/Science Teaching Scholarship Offered

Northwest Missouri State University is looking for a few good science students: The University will provide the four-year training, computer work stations, housing and recreation opportunities on its campus in Maryville.

Upon successful completion of the training program, a two-year tour of duty in Missouri Schools is required.

If the above sounds like the University is preparing for battle, it is. The battle is to halt the loss of science teachers in the state's schools.

"This scholarship program is designed to attract outstanding high school seniors into our teacher education programs in science and mathematics," says Bill Dizney, head of student specialized services and coordinator of the new scholarship program.

Dizney says the University will provide a maximum of 30 special math and science scholarships each year. He thinks with the emphasis on increasing base salaries for teachers and the increased financial aid for students in the science and mathematics, schools will be more competitive with industry for the top ranking students.

The value of the math and science scholarships at Northwest vary depending on the criteria met by the student.

Students graduating in the upper five percent of their high school class or receiving a score of 28 or higher on the ACT would receive a \$1,670 scholarship to cover a year's academic fees and room charges.

Students graduating in the upper six to 15 percent of their high school class would receive a \$1,285 scholarship to cover a year's academic fees and one-half of the room costs.

Students graduating in the upper 16 to 25 percent of their high school would receive a \$900 scholarship, the amount of academic fees paid by most students for a year.

A computer work station is also provided in each residence hall shared by two Mathematics/Science Teaching Scholarship recipients.

Figures compiled by the Missouri Department of Elementary and Secondary Education indicate that in the next two years, 200 additional teachers of mathematics will be needed in the state. That's three times the number graduated in 1983-84 in Missouri who were granted teacher certification. Data indicate a similar shortage in biology, chemistry, and physics.

Dr. Arthur Mallory, Missouri commissioner of elementary and secondary education, said the new mathematics /science scholarship at Northwest is a positive step in attracting and retaining the very best people in the teaching profession.

"It has been my conviction for some years that the single most important decision we must make is who will teach our children in the next 10 to 15 years," said Mallory. "Fifty percent of those currently teaching in our school systems will retire in the next 10 years. Northwest's scholarship should help attract strong and capable young people into mathematics and science teaching."

—provided by Northwest Missouri State University, Maryville, Missouri 64468-6001.

MSOE President's Scholarships

Covers tuition for four full years of study at the Milwaukee School of Engineering.

Awarded on an academically competitive basis.

Qualifications:

- High school senior graduating in spring of 1986
- Maintaining a cumulative grade point average of 3.2 or higher on a 4.0 scale
- Completed algebra I, algebra II, geometry and chemistry or physics
- Currently enrolled in advanced mathematics and physics or chemistry
- Applied for admission to MSOE

For more information, contact the MSOE Admissions Office at

P.O. Box 644, Milwaukee, WI 53201-0644

or call toll free 1 (800) 558-4653 or Metro Milwaukee (414) 277-7200

Financial Aid Checklist (Places to look)

1. The Financial Aid Office at the school you plan to attend is probably your best source of financial aid. Information about state, national and local aid is often available as well as about funds the school has to award.
2. The area in which you plan to study may have some of their own awards. For instance, a music school, business school or psychology department within a large university may administer some scholarships or grants separately. An automotive or medical division of a technical school also might have resources at their disposal that are not administered by the school's Financial Aid Office.
3. Your high school may have some awards that require an application.
4. The employers of your parents may have opportunities for children of employees. Even your employers may have something. Newspapers often have awards for their carriers, and golf caddies may have something sponsored by a sporting goods manufacturer.
5. Investigate all organizations that you or your parents belong to. Look at church, lodges, clubs and even mutual insurance companies. Don't forget DECA, FFA, Scouting, KC's, etc.
6. Local civic organizations such as Elks, Kiwanis, Moose, American Legion, Rotary, etc. often make funds available for students to attend educational programs.
7. State and national organizations related to your possible college major may prove an excellent source of no need financial aid.
8. Compete in some of the many contests that are offered. Often few compete and even fewer prepare diligently.
9. Some ethnic groups have scholarships on a local, state and national level. Minority scholarships are especially big now as schools try for affirmative action.
10. Individuals often give money to a business, union, club, school, professional organization to use for scholarships. Ask everyone if they know of anything. The awards that are hard to find may have little or no competition.
11. Consider funding available through the military service. The National Guard and Reserves have educational benefits as do the enlistment programs, ROTC, Academies and professional programs. Obviously, some degree of military commitment is involved.
12. Taking advanced classes in high school or taking certain tests, such as the Advanced Placement or the College Level Examination Program tests, may be worth college credits or advanced standing in technical schools. This may save a half year's tuition and expenses.
13. Keep reading \$scholarship\$ Etc.

Attention College Students

Emergency Scholarship Funds From AAIA

The Association of American Indian Affairs (AAIA) announces an Emergency Aid Scholarship program to provide grants of up to \$300.00 to Indian college students who face a needy financial situation that may interrupt their studies. Eligible students include American Indian or Alaskan Natives who are currently enrolled at an accredited college, university, or post secondary education program. Instead of an application, needy students are requested to submit a letter to the Association that includes: name, address, financial aid officer, and phone number of the institution, brief budget of resources and expenses; amount of aid requested; year in school; subject of study; tribal affiliation, and enrollment number; and social security number. Letters should be addressed to:

Scholarship Coordinator
Association on American Indian Affairs
95 Madison Avenue
New York, NY 10016