

## KALIHWI — SAKS

The logo of the Kalihwi-saks, the official publication of the Oneida Tribe of Indians of Wisconsin, encompasses much tribal symbolism. Building upon the heritage of the publication and the heritage of the Oneida people, this fairly recent adaptation of the logo by Oneida artist, Mary LeMieux, integrates traditional thought and contemporary artistic form.

The first written publication which specifically addressed tribally-relevant issues was known as "The Scout." Although only a local newsletter, it sufficed as a means of informing the reservation community of local events and concerns. Very quickly, however, it altered in format and content and grew to become a viable publication with a readership of approximately 8,000.

Because our people are matrilineal, it is not uncommon for our women to hold many responsible positions within the tribe. For much of this paper's history the position of editor has been held by a woman. Therefore, as the paper evolved and the banner reflected the word for "scout" in the Oneida language, it was logical that the name would be made feminine, viz., "Kalihwi-saks," figuratively translated as "She looks for news."

The border which circumscribes the logo reminds us that all things in life are cyclical. Just within the border are overlapping semi-circles or domes. These domes represent Mother Earth, and particularly, "Great Turtle Island," the traditional reference to the North American continent. The symbols ( ) represent the Great Tree of Peace, which in turn signifies the forming of the Iroquois Confederacy of which the Oneida nation is a part.

Within the circle one sees a proud Oneida woman with braided hair. Her braids signify that her mind is clear and that she is in balance with Creation. Her view is unclouded and unobstructed. It continues over the grasses and the medicines and the trees. It reaches to our eldest brother, the Sun. A scout must have this quality of clear vision, and must be able to return to the people with accurate information of what has been seen and what is now known. This is the responsibility of the publication, **Kalihwi-saks**. This is its logo.

### Kalihwi-saks

P. O. Box 365  
Oneida, WI 54155

NON-PROFIT  
ORGANIZATION  
U.S. POSTAGE  
**PAID**  
Oneida, WI 54155  
Permit No. 4



## TWELVE THINGS TO DO IF YOUR LOVED ONE IS AN ALCOHOLIC

1. Don't regard this as a family disgrace. Recovery from alcoholism can come about as in any other illness.
2. Don't nag, preach or lecture to the alcoholic. Chances are he has already told himself everything you can tell him. He will take just so much and shut out the rest. You may only increase his needs to lie or force him to make promises he cannot possibly keep.
3. Guard against the "holier-than-thou" or martyr-like attitude. It is possible to create this impression without saying a word. An alcoholic's sensitivity is such that he judges other people's attitudes toward him more by small things than outspoken words.
4. Don't use the "if you loved me" appeal. Since the alcoholic's drinking is compulsive and cannot be controlled by willpower, this approach only increases his guilt. It is like saying, "If you loved me, you would not have tuberculosis."
5. Avoid any threat unless you think it through carefully and definitely intend to carry it out. There may be times, of course, when a specific action is necessary to protect children. Idle threats only make the alcoholic feel you don't mean what you say.
6. Don't hide the liquor or dispose of it. Usually this only pushes the alcoholic into a state of desperation. In the end, he will simply find new ways of getting into more liquor.
7. Don't let the alcoholic persuade you to drink with him on the grounds that it will make him drink less. It rarely does. Besides, when you condone his drinking, he puts off doing something to get help.
8. Don't be jealous of the method of recovery the alcoholic chooses. The tendency is to think that love of home and family is enough incentive for seeking recovery. Frequently the motivation of regaining self-respect is more compelling for the alcoholic than resumption of family responsibilities. Or you may feel left out when the alcoholic turns to other people for help in staying sober. You wouldn't be jealous of the doctor if someone needs medical care, would you?
9. Don't expect an immediate 100% recovery. In any illness there is a period of convalescence. There may be relapses and times of tension and resentment.
10. Don't try to protect the recovering alcoholic from drinking situations. It's one of the quickest ways to push him into a relapse. He must learn on his own to say "no" gracefully. If you warn people against serving him drinks you will stir up old feelings of resentment and inadequacy.
11. Don't do for the alcoholic that which he can do for himself or which must be done by himself. You cannot take his medicine for him. Don't remove the problem before the alcoholic can face it, solve it, or suffer the consequences.
12. Do offer love, support and understanding in his sobriety.

All things are circular . . .  
 Our lives, families, bands and tribes.  
 In recovery, I will become a link in a circle of support  
 enabling me to give and receive.

The stronger the circle, the smaller chance that I  
 will return to drinking or using drugs.

Sharon Day-Garcia

# Children of addicts need a special kind of help



The experts call it 'chemical dependency.' The kids call it 'lonely.'

## KALIHWI-SAKS

The Official Publication  
 of the Oneida Nation

This publication is distributed free  
 to all enrolled Oneida Tribal members.  
 If you know of someone who is not  
 receiving the KALIHWI-SAKS,  
 please have them send their name  
 and address as they are listed on  
 the Oneida rolls to:

KALIHWI-SAKS  
 Oneida Tribe of Indians  
 of Wisconsin  
 P. O. Box 365  
 Oneida, WI 54155

or call:

414 — 869-2083

KALIHWI-SAKS is distributed local-  
 ly at the beginning of the month.  
 Distribution nationwide is made at  
 the end of each month.

### STAFF:

Grace Koehler, Coordinator  
 Hilda Alicea, Secretary  
 Loren Moore, Press Operator

### COVER AND DESIGN:

Original Artist:  
 Mary LeMieux

Resemblance and Color:  
 Loren Moore

Layout and Design:  
 Grace Koehler and Hilda Alicea

# TABLE OF CONTENTS

## FEATURES

Oneida Rodeway Inn . . . . .	2
Department of the Interior . . . . .	6
Faith Rallies, Inc. . . . .	8

## ANNOUNCEMENTS

Miss Indian World . . . . .	10
Job Openings . . . . .	11
Happy Birthdays/For Sale . . . . .	12
Second Annual Wisconsin Indian Arts Festival . . . . .	13
Wisconsin National Guard Pays Off . . . . .	14
The Oneida Retirement Community . . . . .	16
Educational Programs . . . . .	17
Oneida Community Gathering . . . . .	20
Notice to Tribal Hunters . . . . .	20

## DEPARTMENTS

Personnel Office . . . . .	23
Oneida Law Office . . . . .	23
JTPA . . . . .	24
Norbert Hill Center . . . . .	25
Oneida Tribal Enrollment Office . . . . .	26
Oneida Health Center . . . . .	27

DECEMBER ISSUE — VOLUME 2 — 1984



3. Learns alcoholism is a disease
4. Express desire for help
5. Attempts to stop drinking
6. Desire for alcohol persists
7. Starts to react in group therapy
8. Told alcoholism can be arrested
9. Care for personal appearance, hygiene begins
10. Attempts at honest drinking
11. Spiritual needs examined
12. Dawn of new hope
13. Desire for group therapy grows
14. Belief that a new life is possible
15. Regular nourishment taken
16. Application of spiritual values begins
17. Beginning of realistic thinking
18. Diminishing fears and anxieties
19. Family and friends appreciate efforts
20. Natural rest and sleep
21. Some self esteem returns
22. New set of moral values start unfolding
23. Desire to escape passes
24. New circle of stable friends
25. New future faced with determination and courage
26. Adjustment to family needs
27. New interests develop
28. Increase of emotional control
29. Rebirth of ideals
30. First steps toward economic stability
31. Appreciation of real values
32. Rationalizations recognized
33. Increased interest/activity in group therapy
34. Confidence of employer begins
35. Begin contentment in sobriety
36. Improved peace of mind
37. Full appreciation of spiritual values
38. Return of respect of family and friends
39. Continuous, comfortable feeling of sobriety begins
40. ENLIGHTENED AND INTERESTING WAY OF LIFE OPENS UP WITH ROAD AHEAD TO HIGHER LEVELS THAN EVER THOUGH POSSIBLE
41. RECOVERY

ROLE

BEHAVIOR

FEELINGS

May end one dependent relationship and move into another  
Nurturer for family

Family Hero (Superachiever)

Often oldest or the "special" child

Tries to hold family together  
Attempts to cover family shame by overachieving  
May identify with and marry an alcoholic  
Get family into treatment but won't go themselves  
Follows pattern of parent most identified with

Responsibility  
Inadequacy  
Insecurity  
Guilt

Scapegoat

Often the second child, may be abused physically or emotionally

Non-achiever  
May rebel or run away  
Own peer group most important  
Get attention in any way  
Blames themselves for family problems  
Only gets negative attention  
May attempt suicide

Hurt  
Left out  
Inadequacy

Lost Child

One or more children, withdrawn

Not achieving, not criticized (as if not there)  
Detached physically and emotionally  
May become promiscuous, hard to form any strong emotional attachments  
Learns no socialization skills

Loneliness  
Inadequacy  
Unimportance

Mascot

May be the youngest, hyperactive

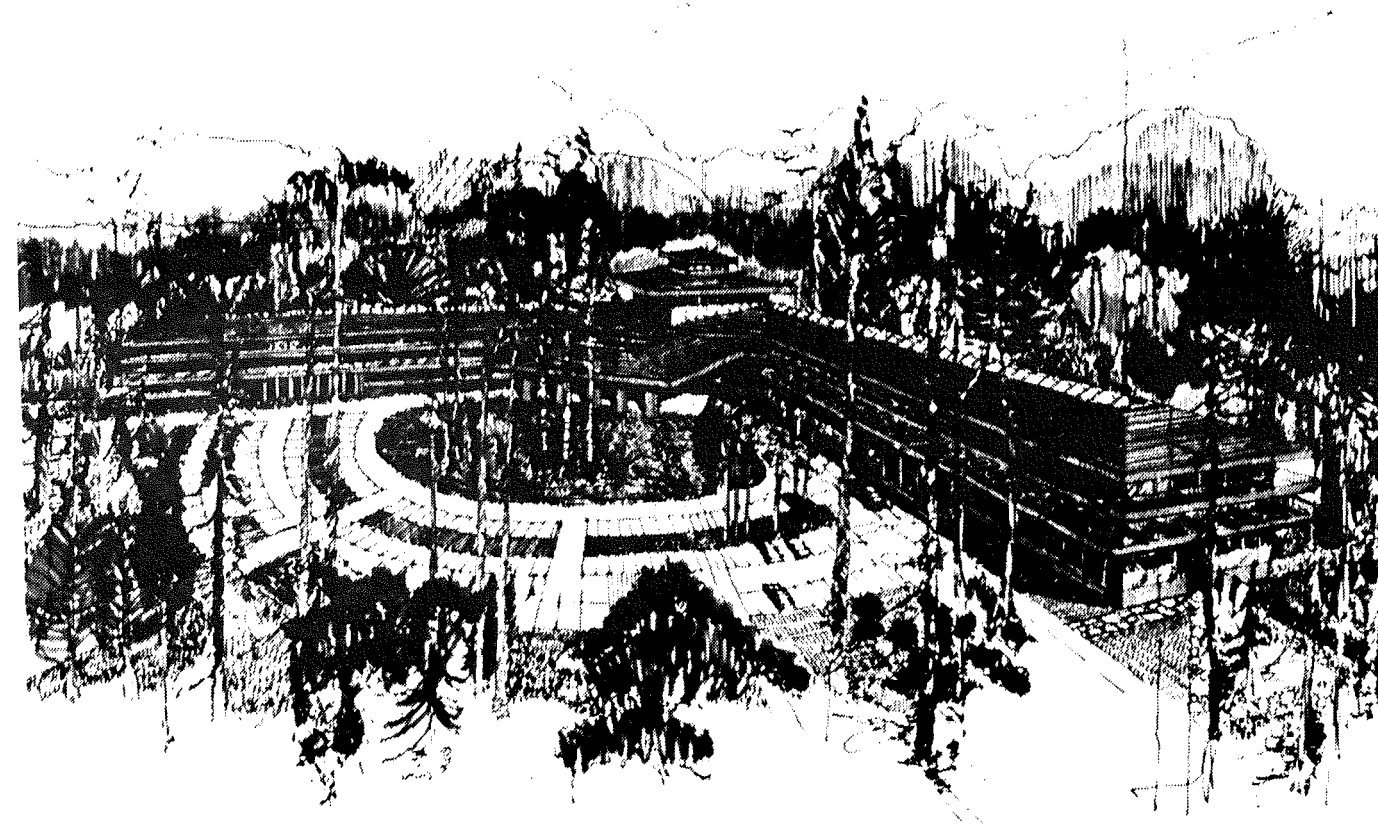
Doesn't know what's going on  
Protected by rest of family from problems  
Always the last to know  
May be hyper, feels tension and doesn't know why it's there  
May be funny or misbehave

Confused  
Tense

\*\*\*\*\*

RECOVERY

1. Meets recovering, normal, happy alcoholics
2. Drying out/medical help



# ONEIDA RODEWAY INN

On November 12, 1984, The Oneida Tribe broke ground for its \$10.5 million Rodeway Inn. The 200 room structure will be built along Airport Drive, across from Austin Straubel Airport.

Purcell Powless, Chairman of the Tribe's Business Committee, stated that, "We expect to begin construction as early as possible in the spring and be open for business about January 1, 1986. We are elated that the efforts to put this project together have been successful and want to express our gratitude to all of those who helped to make the project possible.

The hotel will be constructed on a 15 acre tract of land immediately east of the Irene Moore Activity Center. The wooded character of the land will be retained as much as possible when the "V" shaped hotel is built.

Bids on the project are expected to be taken shortly. Thereafter, work will begin in the early spring.

Management Plans

The hotel will be a franchise of Rodeway Inns International of Dallas, Texas. It will be managed by Lodging Systems Management, Inc. Both of these companies are wholly owned subsidiaries of Parkmount Hospitality Corporation.

When completed, the Oneida Rodeway Inn will meet a significant market demand. The market conditions call for an airport oriented hotel that serves commercial travelers, sports fans, and vacationers. The hotel will also provide a new luxurious facility for local dining and meetings. These services are expected to surpass comparable services in the immediate area.

Employment

The total project will create a large number of jobs. Once fully operational, it's expected that approximately 160 permanent employees will be needed.

Developmental Effort

The staff of the Oneida Tribe worked hard to get this project underway. The effort started with a feasibility study which in turn made strong recommendations in support of the idea. Thereafter, a development team was established which included the Tribe's Economic Development office. A grant of \$1,750,000 was awarded by the U.S. Economic Development Administration and the Department Housing and Urban Development. A guaranteed loan was approved from the Bureau of Indian Affairs. Both efforts aided considerably in the tital financing effort. Other efforts were provided by the village of Ashwaubenon in allowing sewage and water access.

The result of these efforts was symbolized in the groundbreaking ceremonies. The Tribe was awarded plaques for the project, and a special award was provided by the Administration for Native Americans. In addition, several local officials were present representing the governments of the City of Green Bay and Brown County. 250 people attended the ceremony for the \$10.5 million hotel which represents the largest, development of any Indian Tribe in Wisconsin - and one of the largest in the country.

The Development Team

A project of this size requires the joint efforts of many persons and institutions. Other team members for the hotel includes C.S.O. Architects of Indianapolis; the construction management firm of Geupal DeMars, Inc. of Indianapolis; and the financing firm of Grootemaat Corporation of Milwaukee.

The construction management firm, Geupal DeMars, has been established for 57 years. It's one of the best known firms for construction management in the midwest. Both Geupal DeMars and C.S.O. are also involved in other Rodeway Hotel development projects in the United States.

Features

The Oneida Rodeway Inn will feature a major facility of significant worth to surrounding communities. As said before, it will be across from Austin Straubel Field, a major airport, located in the midst of the Village of Ashwaubenon, and next to the Irene Moore Activity Center, the home of Oneida Bingo. It will feature:

1. 200 rooms
2. Meeting Rooms to accommodate 500
3. A Restaurant and Lounge
4. Indoor Swimming Pool
5. A Gift Shop

Family Trap

School Trap

Co-alcoholic's Progression of Disease

18 symptoms

First Phase	increase in tolerance repression sneaking around
Middle Phase	increased anxiety - have to hurry up and do something to prevent impending tragedy increased guilt decreased contact with others alibis - if you live with I live with increased ingenuity to cover up grandiosity - I will make you sober aggressive behavior persistent remorse - I'll never check on you again geographical escape concentration on money troubles unreasonable resentments
Chronic Phase	decreased physical health rigidity - perfectionism in controllable arease decaying ethics - not dealing with responsibility realistically spiritual bankruptcy - look for a perfect counselor

\*\*\*\*\*

ROLES IN THE ALCOHOLIC FAMILY

The alcoholic family's greatest difficulty is having to resort to trial and error in their attempts to counteract alcoholism. Eventually alcoholic behavior becomes the only consistent behavior. The family knows what to expect when the dependent member is intoxicated. They can function accordingly. Consequently, they may unconsciously prefer and encourage drinking.

<u>ROLE</u>	<u>BEHAVIOR</u>	<u>FEELINGS</u>
<u>Chemically Dependent</u>		
Person who has lost control over use of alcohol, needs the drug more than anything else.	Irresponsible Blames others Denial of problem Compulsion to drink Unable to give emotionally Charming Cunning	Guilt Failure Shame Inadequacy
<u>Prime Enabler ("Co-alcoholic")</u>		
Person with the closest emotional relationship	Denial of problem Very responsible for all of family Seeks social isolation for family Sarcastic anger Becomes physically ill	Fear Anger Shame Inadequacy Resentment Self-doubt

# ONEIDA HEALTH CENTER

MOMS, DAUGHTERS NEED TO TALK

By Cosmopolitan

The domestic cold war between mothers and daughters can be thawed by applying intelligence, insight and maturity.

One step down the road to family detente, according to the October issue of Cosmopolitan, is to try to see Mom as a person, not just a parent.

"The reason it's so hard to look at her objectively," says Barbara Suter, a New York clinical psychologist, "is that you need her to be someone you can admire and learn from. If you see her behaving in a way you don't respect, it's threatening . . ."

"One technique that can help you see her objectively is to approach her as a biographer might. Ask questions about her life as if you were meeting for the first time. Pretend you are filming a documentary. Be an observer, not her child."

Leo Buscaglia, author of five books on loving and caring, agrees.

"Get to know your mother," he advises. "We grow up strangers. One of the sad facts is that right from childhood on, mothers rush around with their daughters to ballet class and Girl Scouts, but they rarely take time to sit down and talk with them."

Tom Cottle, a Harvard Medical School lecturer on psychiatry, recommends comparing recollections of a painful experience but warns, "don't look for the bottom-line truth."

"There is a truth for you and one for her, and they exist side by side, exactly like two people," he says.

A successful career woman can cause problems for her daughter, according to Florence Kaslow, director of the Florida Couples and Family Institute in West Palm Beach.

"Many daughters of superwomen believe their mothers have set standards for them that are too lofty," she says. "They feel pressured to live up to these expectations, and uncertain whether they can. Often they are very close to their mothers and admire their strength and existing lifestyle but are unable to separate enough from them to develop their own identity."

Living up to mother's expectations can prove difficult. When Bess Myerson lost her New York primary race for the U.S. Senate, it took all her courage to tell her mother, "I didn't lose - my opponent just got more votes."

Toni Grant, a Los Angeles psychologist with a call-in radio show, told Cosmopolitan, "It's highly neurotic to go on begging, hoping, striving for your mother's approval. Far better to surround yourself with people who appreciate you as you are."

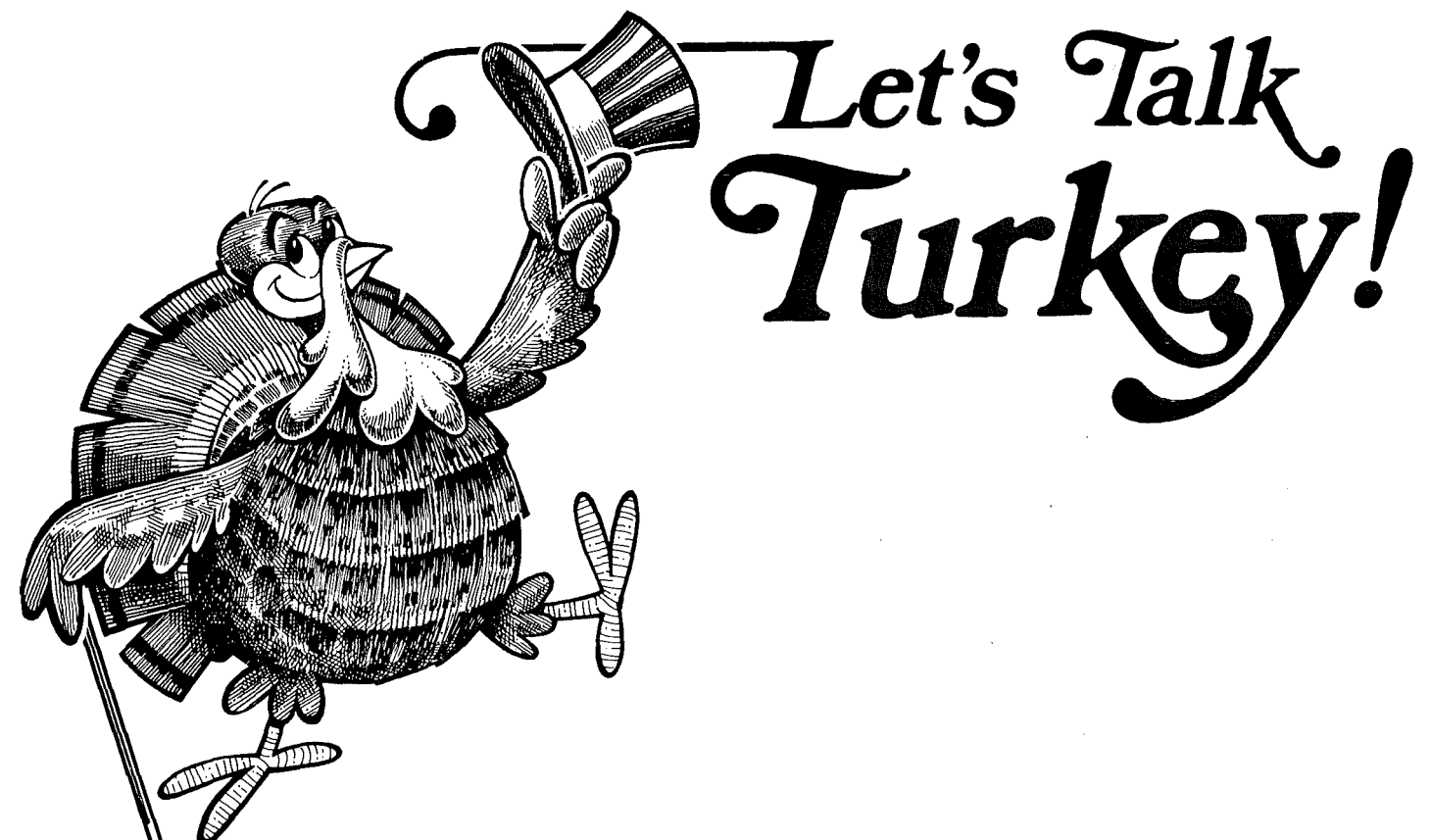
Sometimes time brings mother-daughter friendship.

"I always thought my mother was relatively unpleasable when I was younger," author Erica Jong says, "but now I feel that she'd be proud of me. I had a daughter when I was 36, and that made an enormous difference. When it happened, I understood, later than most, what she felt. We now have a wonderful relationship."

These features are expected to attract those who use the airport facilities, as well as major corporations who are in need of meeting space.

Moreover, the proposed structure is designed to blend with the surrounding forest. This is to reflect the heritage of the area with the use of traditional stone and wood exterior treatment. The interior will feature modern design with a decorative theme to compliment the exterior which is patterned after the concepts of Frank Lloyd Wright.

# HAVE A SAFE AND HAPPY THANKSGIVING!!



# ONEIDA TRIBAL ENROLLMENT OFFICE

ATTENTION TRIBAL MEMBERS

TRIBAL IDENTIFICATION CARDS WITH YOUR PICTURE WILL BE AVAILABLE AT THE ONEIDA ENROLLMENT OFFICE BEGINNING NOVEMBER 19, 1984. COST OF ID'S ARE \$3.50 AND \$1.50 FOR SENIOR CITIZENS WHO ARE 55 AND OVER.

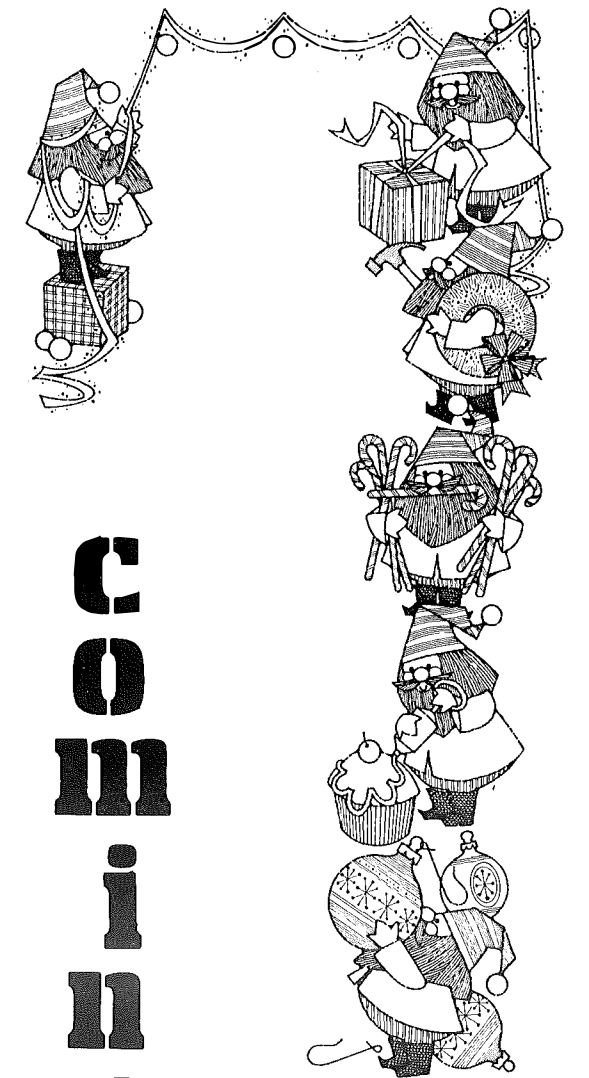
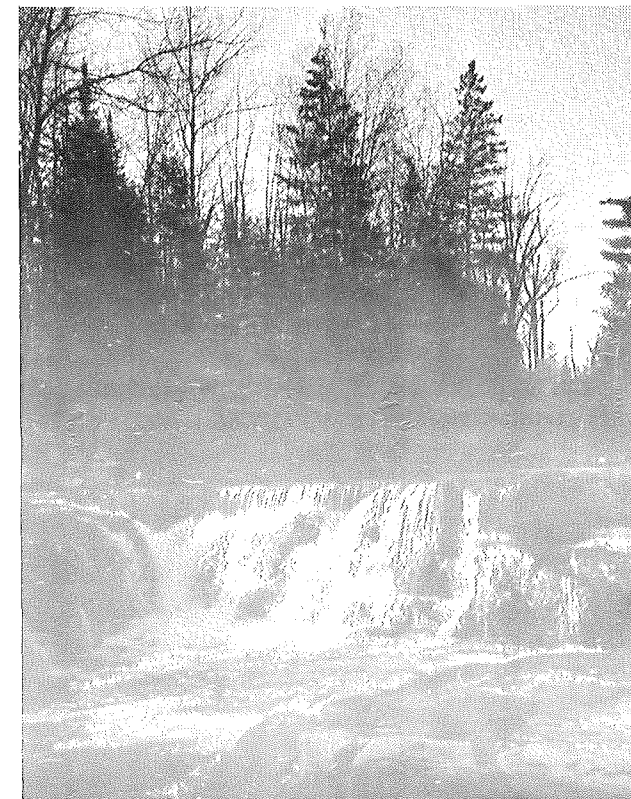
CARDS WILL ONLY BE ISSUED TO INDIVIDUALS IN PERSON.

IF YOU HAVE ANY QUESTIONS, CALL THE ONEIDA ENROLLMENT OFFICE AT 869-2360.

\* \* \*

"HISTORY OF THE ONEIDA INDIANS" BOOKLETS ARE AVAILABLE THRU THE ONEIDA ENROLLMENT OFFICE.

THEY WILL NO LONGER BE ISSUED THROUGH THE PLANNING OFFICE.



**c  
o  
m  
i  
n  
g**

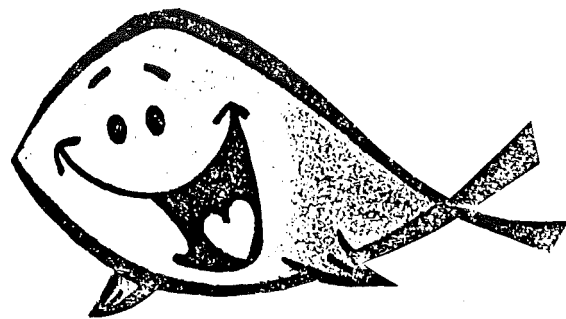
ONEIDA CHRISTMAS  
CRAFT FAIR

DECEMBER 7, 1984  
AT  
CIVIC CENTER

(FOOD & HANDMADE ITEMS ONLY)

FOR INFORMATION CALL 869-2711





WHAT'S NEW AT NORBERT HILL CENTER

NHC FOOD SERVICE

FISH FRY

Beginning November 9, 1984

Fridays: 11:00 AM - 9:00 PM

Carry - Outs OR In - House

Your choice of: Perch

Haddock

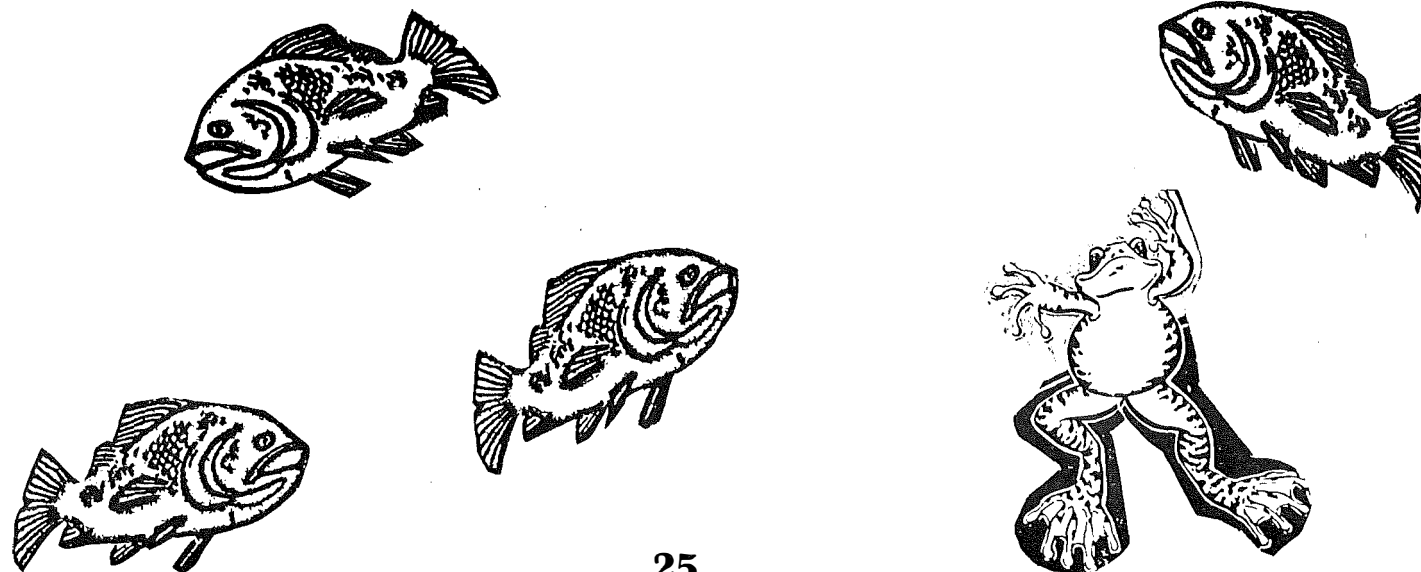
Walleye OR

Frog Legs

Each plate consists of: Potato Salad OR French Fries  
and Cole Slaw

Cost per plate: \$4.25

Feel free to call ahead: NHC Food Service - 869-2214



# DEPARTMENT of the INTERIOR

## SECRETARY CLARK PRAISES PRESIDENT'S APPROVAL OF AK-CHIN SETTLEMENT ACT

Interior Secretary William Clark said today that legislation signed by President Reagan demonstrates it is possible to negotiate water rights settlements that are beneficial to Indian tribes and to non-Indian water users as well.

"President Reagan has directed the Department of the Interior to encourage negotiation of Indian water rights claims in order to settle water issues that continue to be of great concern throughout the Nation," Clark said. "His signing into law of H.R. 6206, relating to the water rights of the Ak-Chin community, marks another milestone in the Administration's efforts at resolution of the many complex Indian water claim disputes."

"It isn't often we get a chance to fulfill a longstanding obligation to an Indian tribe, save the taxpayers tens of millions of dollars, foster water conservation and add to the benefits of other water users in a State," Clark said. "But after two years of negotiations with the Ak-Chin tribe, the State of Arizona, and other interested parties, we have found a way."

Secretary Clark said that Congress amended the Ak-Chin Water Settlement Act of 1978 at his request so the negotiated agreement could be implemented without delay.

The negotiated agreement provides a permanent water supply for the Ak-Chin tribe at less than one-half of the \$100 million cost of a 1979 plan which would have provided temporary supply. The agreement also improves water conservation efforts along the Lower Colorado River and provides benefits to non-Indian water users in Arizona as well.

Under the 1978 law, the Ak-Chin Reservation, 30 miles south of Phoenix, was to receive 85,000 acre-feet of water beginning this year. The bill also provided for a permanent water supply to be completed no later than 2003. A plan formulated by the previous Administration would have cost \$100 million to provide only interim water delivery to the Reservation. Secretary Clark noted that Congress had authorized less than half of the \$100 million cost of the plan. He also said that the previous agreement would have taken groundwater needed by the Papago tribe to meet the Federal obligation to the Ak-Chin tribe.

Under the new plan which President Reagan signed into law, 50,000 acre-feet of water will be made available from the Yuma-Mesa Division of the Gila Reclamation Project for reallocation to the Ak-Chin Reservation; this water, along with Ak-Chin's Central Arizona Project allocation, will fulfill its entitlement. An agreement-in-principle was signed with irrigation districts in the division on Sept. 5, 1984.

"The bulk of this water is presently unused and may be reallocated to Ak-Chin without adverse effects on the agricultural development in the Yuma area," Clark said. "To facilitate the reallocation, \$11.7 million in benefits will be furnished to the Division by the Federal Government. Moreover, the bulk of this funding -- \$9.4 million -- will be earmarked for water conservation measures within the Division to ensure more efficient use of water. Not only has this cooperative arrangement secured for Ak-Chin its permanent water supply, it also contributes to water conservation on the lower Colorado River."

Clark said that water users in central Arizona would also benefit because any of the water not needed by Ak-Chin would be available for allocation to other water users in

the State. It was estimated this would total 30,000 acre-feet annually between 1988 and 2010.

Under the agreement-in-principle achieved last September, the Federal Government agreed to secure Ak-Chin its permanent water supply for delivery in 1988 via the Central Arizona Project and agreed to compensate the community with about \$28 million in benefits in lieu of water deliveries in the 1984-1987 period. In return, the community agreed to reduce its statutory water entitlement from 85,000 acre-feet annually to 75,000 acre-feet in normal and wet years, and to 72,000 in dry years.

Office of the Secretary



# JTPA

## NATIVE AMERICAN PROGRAM

Do you need help in determining your career goals and objectives? Are you having difficulty finding and keeping a job? Have you thought about returning to school?

To help you decide on a future career the Career Development and Placement Office (JTPA sponsored) can help you decide and offers services in these and other areas:

- Assistance in determining interests and abilities
- Assistance in goal planning
- Assistance in decision making and problem solving
- Assistance in career exploration and selection
- Other information

Other services include:

- Job referrals
- Job placements
- On-the-Job training

Also skills training allowances and GED Classroom training are offered by the Career Development and Placement Office.

For more information and eligibility determination, please call or stop by. The new address is ROOM 1359, NORBERT HILL CENTER, ONEIDA, WISCONSIN 54155 and the phone number is 869-2343 or 869-2344.

\* \* \*

## FUTURE JOBS

According to the U.S. Department of Labor's "Occupational Outlook Handbook", the fastest growing occupations over the next 10 years are in the

areas of:

Computer Service Technicians  
Legal Assistants  
Computer Analysts  
Machine Tool Makers  
Computer Programmers  
Office Machine Repairers  
Electrical Engineers  
Electronic Technicians  
Occupational Therapists  
Health Service Administrators

Along with this list there will also be a need to create more jobs in the areas of:

Sales Clerks  
Custodians  
Cashiers  
Secretaries  
Registered Nurses  
Truck Drivers  
Waiters/Waitresses  
Elementary School Teachers  
Nursing Aids

In looking at these lists, you will note that the training for the majority of these occupations is offered by Vocational and Technical Schools such as N.W.T.I. and F.V.T.I. in our own local area.

For more information, please contact the Career Development and Placement Office (JTPA) at the Norbert Hill Center. The phone numbers are 869-2343 or 869-2344.



# PERSONNEL OFFICE

NEW LOCATION  
NORBERT HILL CENTER -- ROOM 1308  
(2nd Floor - north end)

PHONE: 869-1320

\* \* \*

PART-TIME ONLY

Interested in part-time work?

Would you like to work part-time until  
you find a full-time position?

From time to time emergency/temporary  
positions are available.

The following areas apply:

Custodian  
Food Service  
Secretarial/Clerical

Submit your application to the Oneida  
Tribe's Personnel Office, Norbert Hill  
Center, Room 1308.

8:00 a.m. to 4:30 p.m.  
M through F

\* \* \*

POSITION: General Manager  
LOCATION: Norbert Hill Center  
SALARY: Negotiable Depending Upon Ex-  
perience \$26,000 - \$35,000  
CLOSING DATE: Until Filled

POSITION: Small Press Operator  
LOCATION: Oneida Printing Center  
SALARY: Grade 14 \$6.92/Hour Minimum  
(Negotiable)  
CLOSING DATE: November 26, 1984

Applications must be submitted to:

Personnel Office  
Oneida Tribe of Indians of Wisconsin  
P.O. Box 365  
Oneida, WI 54155

# ONEIDA LAW OFFICE

TRIBE'S TREATY RIGHTS SUPPORTED  
AGAINST 'EQUAL RIGHTS' ORGANIZATION

Wisconsin Indians, whose treaty hunting and fishing rights were upheld by the U.S. Supreme Court in 1983, received support August 19 from the Milwaukee Journal in an editorial and editorial cartoon. It seems that some Wisconsin residents have formed an organization called Equal Rights for Everyone with the purpose of persuading Congress to overturn the court's decision. The cartoon shows a fork-tongued cowboy character holding a gun on a Chippewa, demanding "OK Red-skin! Hand over the treaty.!" One of his cohorts, standing behind him, is wearing a button that proclaims, "Equal Rights for Bigots." The editorial begins: "American Indians have been treated as second class citizens for so long that when they win legal affirmation of some long-ignored rights, the majority culture finds it hard to adjust." The paper criticizes the "equal rights" group for "ugly racial overtones" in comments at a recent meeting. It also praises the Chippewas "who are forming a commission to establish legal codes for protecting fish and wildlife and a system for dealing with Indians who do not comply." The editorial concludes: "Instead of pursuing a divisive and probably futile quest to overturn the law of the land, the critics would do better to join with the Indians in an effort to ensure wise use of Wisconsin's rich and abundant natural resources."

\* \* \*

# FAITH RALLIES, INC.

"Stand against . . . the wiles of the Devil"  
by Rev. Bruce Roller

Introduction

For too long now the historic church has accepted a Satanic theology until it has become virtually a coven of satan - worshippers rather than giving all honor, awe, and reverence to God. Christianity has become, for all intents and purposes, a dualistic religion, worshipping two Gods -- YAHWEH or Jesus, the Good God; and Satan, the evil god, this is idolatry!

Satan in the Old Testament

The name satan, which means "an opponent" is mentioned only nineteen times in the Old Testament, fourteen of these in the book of Job. In every instance he is seen as an adversary and accuser. In every instance he is seen as being in direct opposition to God, and he is seen as weaker than God, as in Zechariah 3:1,2 where all that was necessary to thwart satan was for the angel of the Lord to say, "The Lord rebuke you, O Satan! Even the Lord who now and habitually chooses Jerusalem, rebuke you!" God did little teaching about satan under the Old Covenant because the people had little power over him. Adam had given his lordship and dominion in the earth to satan who then became the "god of this world". Instead, God gave his people rules to live by that, if followed, would thwart satan's plan for them, and allow them to function productively without being fully aware of this evil power that opposed them.

Satan in the New Testament

The New Testament, on the other hand, is much more explicit in speaking of satan; and it has nothing good to say about him. Jesus, nor any of the apostles, speaks of satan as being a formidable opponent or a worthy foe. He receives no honor in the New Testament.

Instead Jesus spent most of his ministry ordering satan and his cohorts around, "Get thee behind me, satan, (Mt. 16:23; Mk. 8:33; Lk. 4:8)"; "Get thee hence, satan, (Mt. 4:10)." Jesus often forbade the demons even to speak! He openly termed the devil a liar (Jn. 8:44), a thief (Jn 10:10), and a murderer (Jn. 8:44). Jesus' perspective of satan was as dethroned and powerless: "I beheld satan as lightning falling from heaven. Behold I give you power . . . over all the power that the enemy possesses, and nothing shall by any means harm you, (Lk. 10:18,19)". Of course Jesus recognized satan as an enemy, and knew that he would try to deceive the disciples, but he recognized faith and prayer as the perfect defenses: "Simon, Simon, listen! Satan has excessively asked that (all of) you be given up to him -- out of the power and keeping of God -- that he might sift (all of) you like grain. But I have prayed especially for you . . . that your . . . faith not fail . . . (Luke 22:31,32 Amp.)"

The Apostle Paul saw conversion as a turning from the power of satan (darkness) to God (light) (Acts 26:18); not of being at the mercy of two great powers. He indicated that it is only by wiles or trickery that satan can get the advantage over us (Eph. 6:11; 2 Cor. 2:11; 2 Cor. 11:14). John, the author of Revelation, saw satan's last great attempt at power: "And when the thousand years are completed, Satan will be released from his place of confinement, and he will go forth to deceive and seduce

and lead astray the nations . . . (Rev. 20:7-8, Amp)." But we are not at the mercy of satan because "We are not ignorant of his devices;" therefore he cannot deceive us.

Why Satan Has No Power

"Sin shall have no more dominion over you (Rom. 6:14)!" Why? God disarmed the principalities and powers ranged against us and made a bold display and public example of them, in triumphing over them in Him and in [the cross] (Colossians 2:15)." We, arrayed in God's whole armor, fight against an army with no weapons; God disarmed them!

"Forasmuch then as the children are partakers of flesh and blood, he also himself likewise took part of the same; that through death he might destroy him that had the power of death, that is, the devil: And deliver them who through fear of death were all their lifetime subject to bondage (Heb. 2:14-15)."

Satan is, for all intents and purposes to the Christian, destroyed! That's why Jesus came!

"For this purpose the Son of God was manifested, that he might destroy the works of the devil (I John 3:8)."

Either Jesus failed in His purpose (and he emphatically did not) or the works of satan are destroyed in the life of the Christian.

The Remedy

We, the body of Christ, need to honor and reverence God alone. We must not glorify the devil or talk of his exploits, his alledged power, or his victories and near victories. Instead we resist him steadfast in the faith (I Peter 5:9). When we do so, he flees from us in stark terror (James 4:7). We must not let satan deceive us into thinking he is strong, powerful, and formidable against us. He is already defeated! "Greater is He that is in you than he that is in the world (I John 4:4)." "You have all power over the power of the enemy!" Do not be deceived, being ignorant of the wiles of the devil. God in you has every victory over satan already!

You are victorious now!

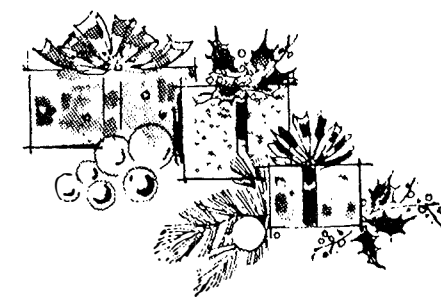


CHRISTMAS MAILING DATES—1984

Military Mail—Outbound

To assure the timely arrival at overseas destinations for Christmas delivery, all mail should be posted on or before the following dates in 1984:

Destination	Priority	Letters	Parcels		Surface
			Airlift Space Available		
			(PAL)	(SAM)	
Africa .....	3 Dec .....	3 Dec .....	12 Nov .....	5 Nov .....	5 Nov.
Alaska .....	10 Dec .....	10 Dec .....	3 Dec .....	26 Nov .....	26 Nov.
Hawaii .....	10 Dec .....	10 Dec .....	.....	.....	26 Nov.
Australia .....	26 Nov .....	26 Nov .....	12 Nov .....	5 Nov .....	19 Oct.
Caribbean/West Indies .....	10 Dec .....	10 Dec .....	26 Nov .....	19 Nov .....	2 Nov.
Central and South America .....	26 Nov .....	26 Nov .....	12 Nov .....	5 Nov .....	2 Nov.
Europe .....	7 Dec .....	7 Dec .....	26 Nov .....	16 Nov .....	2 Nov.
Far East .....	7 Dec .....	7 Dec .....	26 Nov .....	16 Nov .....	19 Oct.
Greenland .....	3 Dec .....	3 Dec .....	26 Nov .....	19 Nov .....	2 Nov.
Iceland .....	10 Dec .....	10 Dec .....	26 Nov .....	19 Nov .....	2 Nov.
Mid-East .....	30 Nov .....	30 Nov .....	5 Nov .....	29 Oct .....	29 Oct.
South and East Asia .....	26 Nov .....	26 Nov .....	9 Nov .....	5 Nov .....	19 Oct.



International Mail—Outbound

Destination	Air Parcels	Airmail Letters/Cards	Surface
North and Northwest Africa .....	26 Nov .....	3 Dec .....	19 Oct.
Australia .....	26 Nov .....	26 Nov .....	19 Oct.
Caribbean/West Indies .....	12 Dec .....	12 Dec .....	12 Nov.
Central and South America .....	5 Dec .....	5 Dec .....	5 Nov.
Europe .....	3 Dec .....	7 Dec .....	5 Nov.
Far East .....	3 Dec .....	7 Dec .....	19 Oct.
Mid-East .....	26 Nov .....	30 Nov .....	19 Oct.
Southeast Asia .....	26 Nov .....	26 Nov .....	19 Oct.
Southeast Africa .....	26 Nov .....	3 Dec .....	19 Oct.
West Africa .....	26 Nov .....	3 Dec .....	19 Oct.

—Mail Processing Dept., 10-4-84.

AMERICAN INDIAN PROGRAM  
MOUNT SENARIO COLLEGE  
SOCIAL WORK SEQUENCE PROGRAM  
CLASS SCHEDULE, SECOND SEMESTER 1984-85

**FRIDAY:** Ta/En 280 INTRODUCTION TO DRAMATIC LITERATURE (3 credits) INSTRUCTOR: A. Moss

Survey of the major western playwrights from the ancient Greeks to the present. Also will discuss genres in drama.

**FRIDAY:** Sw/So 242 HUMAN BEHAVIOR IN SOCIAL CONTEXT (3 credits) INSTRUCTOR: L. Rasmussen

Selected concepts and theories that explain human social behavior, including ideas useful in the helping professions. Includes learning theory, interaction theory, conflict theory, and functional theory. Prerequisites: So 101, Ps 101, or Ps 100, or consent of instructor.

**SATURDAY:** En 112 INTRODUCTION TO COMPOSITION II (3 credits) INSTRUCTOR: M. Fleming

Continuation of En 111. Credit for this course does not apply toward the requirements for an English major or minor. Prerequisite for all following En courses.

**SATURDAY:** Ai/Hs 287 AMERICAN INDIAN HISTORY II (3 credits) INSTRUCTOR: G. Nahbenayash

An examination of the history and culture of the North American Indian from 1887 to the present. Special attention will be given to the federal government's role in administering Indian policy.

**DATES OF CLASSES:** \*January 18 & 19  
February 1 & 2  
February 15 & 16  
March 1 & 2  
March 15 & 16 NO CLASSES, SPRING BREAK  
March 29 & 30  
April 12 & 13  
April 26 & 27  
May 10 & 11 POW-WOW WEEKEND

\*IMPORTANT - PLACEMENT EXAMS FOR ALL NEW STUDENTS BEGIN AT 11:00 a.m.  
REGISTRATION AT 1:00 p.m. in Room 300

**CLASS PERIODS:** FRIDAYS: 1:00 a.m. to 5:00 p.m. SATURDAYS: 9:00 to Noon  
6:00 p.m. to 8:00 p.m. 1:00 p.m. to 4:00 p.m.

ALL NEW AND RETURNING STUDENTS PLEASE CONTACT THE AMERICAN INDIAN PROGRAM OFFICE AS SOON AS POSSIBLE.

**CONTACT PERSON:** Delores Gokee  
Director, American Indian Program  
Mount Senario College  
Ladysmith, WI 54848  
(715) 532-5511, Ext. 272

# MISS INDIAN WORLD

## GATHERING OF NATIONS POW-WOW

Finals plans are in the process for the "Miss Indian World" contest, in conjunction with the "Gathering of Nations Pow-Wow and Cultural Exhibit and Sale. Applications for participation will soon be arriving to the Midwest areas, Eastern, Southeastern and to the Canadian area. The West and Southwestern area has been very cooperative with the individual input as well as the tribal participation. The dates for this year's pageant has been very acceptable to some of last year's participants. The dates - February 22, 23, and 24 for 1985 and the Pow-Wow will be at the State Fair Arena. Mary Greendeer, from Oneida, Wisconsin, has been contracted to coordinate the 1985 pageant during the Gathering of Nations Pow-Wow, held in Albuquerque, New Mexico under the auspices of the University of New Mexico.

The new Board of Directors will meet on November 9th and 10th in Albuquerque, New Mexico, to finalize plans and credentials for artist participation.

We have full support of the city council and the Mayor's office as we have recently acquired a national sponsor. Our invitation to all artists and contestants to attend this Gathering of Nations, is extended sincerely and openly to everyone.

To those interested in participating, please contact either Mary Greendeer or Derek Mathews at the following addresses:

Mary Greendeer      Derek Mathews  
Box 208                      Special Services  
Oneida, WI 54155      Univ. of Albuquerque  
St. Joseph Place, NW  
Albuquerque, NM 87140

# ANN'S WORLD OF



## INDIAN ARTIFACTS

OPEN 7 DAYS A WEEK

MONDAY-SATURDAY:

10 A.M. - 8 P.M.

SUNDAY: 10 A.M. - 6 P.M.

ANN FEATURES A COMPLETE LINE OF TURQUOISE, PENDLETON BLANKETS, BASKETS, DOLLS, LEATHER GOODS, INDIAN GREETING CARDS, RUGS, NOVELTY ITEMS, AND MUCH MORE.

(COMPLETE SILVER REPAIRING)  
WILD RICE — \$6.95 LB.  
INDIAN CORN — \$1.25 QT.

14 KT. GOLD MEN & WOMEN RINGS, CHAINS, CHARMS & EARRINGS.

HWY. 29 — 4 MILES WEST OF ST. MARY'S HOSPITAL — WATCH FOR TEEPEE FRAME.

SENIOR CITIZENS      CHARGE IT!!  
10% DISCOUNT      LAYAWAYS!!

*Ann Skenandore*

\* ANN IS BUYING \*

Oneida made baskets and some bead work. See me on Mondays. Hwy. 29 — 4 miles West of St. Mary's Hospital. WATCH FOR TEEPEE FRAME.

FREE GIFT WRAPPING  
FREE CALENDARS TO 1ST 200 CUSTOMERS  
LAYAWAY TILL DEC. 20 WITH 10% DOWN

# JOB OPENINGS

CHIPPEWA HEALTH CENTER  
 Box 398  
 LacDuFlambeau, Wisconsin  
 (715) 588-3371 54538

POSITION: Public Health Nutritionist

STARTING SALARY: \$20,000 to \$22,000 per annum plus fringe benefits depending upon whether applicant has or does not have RD status and upon amount of appropriate experience.

APPLICATIONS: Application forms can be obtained at the Tribal Personnel Office, and should be returned to that office. Please include a resume and three references with your application.

INTERVIEWS: Interviews of qualified candidates will be held before the Personnel Selection Committee on a date to be announced.

\*\*\*\*\*

Hannahville Indian School  
 Route 1  
 Wilson, MI 49896

The Hannahville Indian School plans to add a Health-Physical Education position to their staff.

Preference will be given to Native Americans.

Those interested may submit resumes, etc. to Tom Miller, Director at the above address.

If you need more information, you may call Walter Abbott, Principal, at 1-906-466-2658 or Tom Miller at 1-906-466-2556.



"HE WAS SWIMMING IN FRONT OF THE MOOSE!"



"MOM'S GOING TO HAVE IT DONE BY SKATING SEASON."

# ONEIDA COMMUNITY GATHERING

The Oneida Community will be gathering to give thanks and praise to the creator in a community Thanksgiving Service to be held at the Norbert Hill Center, Oneida. The service will be Wednesday, November 21, 1984 at 7:30 p.m. The theme will be "The Family of God Gathers in Thanks - One Heart and One Mind." Participants are asked to bring breads or cookies made from the fruits of the earth to share in fellowship following the service. Also requested, is an offering of a baby food item (can/jar/box) which will later be distributed to needy families with young children.

## THANK YOU

MY APPRECIATION FOR PRAYERS, CARDS AND VISITS, ALSO ASSISTANCE AT HOME DURING MY RECENT STAY IN THE HOSPITAL AND RECOVERY AT HOME. THANK YOU,

WOODY WEBSTER

\*\*\*\*\*

I WOULD LIKE TO THANK EVERYONE THAT TOOK PART IN MAKING MY SURPRISE BIRTHDAY PARTY A SUCCESS - MY SISTER, NIECES & NEPHEWS FROM MINNEAPOLIS AND EVERYBODY FROM ONEIDA. THANKS FOR EVERYTHING.

LUELLA DENNY

# NOTICE TO TRIBAL HUNTERS

This is to inform you that the Oneida Tribe has hired Conservation Wardens. These wardens will be out in the field to enforce Oneida Hunting Policies. This is implemented in order to promote Safety and Conservation concerns on the Oneida Reservation.

REMEMBER to pick up your Oneida Hunting permit at the Enrollment Office at the Norbert Hill Center - 8:00 a.m. - 4:30 p.m. daily.

### SEASONS

- a) Buck only! September 15th through November 25th, 1984.
- b) Buck or Does in December, if you haven't filled your tag during September through November.

The Oneida Hunting Ordinance is a Law created by the Oneida Tribe. This law is a permissive law which allows you as a Tribal Member to exercise your Treaty Rights, it is also designed to protect the hunter as well as the deer population. This is a right and privilege. Hunters who do not follow this Hunting Ordinance may be subject to penalty.

We ask for your cooperation in this matter. Respect Oneida Tribal Law for yourself as well as for your community.

Thank you for your time and attention on this matter.

Good Luck! Have a safe hunting season.

Sincerely,

ONEIDA TRIBE OF INDIANS OF WISCONSIN

Richard G. Hill, Vice-Chairman  
 Oneida Business Committee

226B Moore Building, University Park, PA 16802 or call the program office (814) 863-2284.

\* \* \* \* \*

# A CHILD IS BORN

© SCW, INC



# HAPPY BIRTHDAYS

Happy Birthday to my cousin on November 18th. She will be 26 years young.

From Your Cousin  
\* \* \*

Happy Birthday (Grandma) Margaret Summers December 12.

Happy Birthday (Grandpa) Austin Summers December 25.

Happy Birthday Pam Summers Dec. ?  
From the Summers Clan.  
\* \* \*

Happy Birthday to Dixon Swarp, Jr. December 10, wherever you are.  
From Everybody  
\* \* \*

Happy 1st Birthday to Jerilyn Stevens December 11.  
Love Mom & Dad (Jo & Jamie)

Happy Birthday to Jamie Stevens December 21.  
Love Jo & Daughter Jeri  
\* \* \*

Happy Belated Birthday to Dean LaFlex November 8. We love you, chef.  
All Your Family  
\* \* \*

Happy Birthday Tanya Skenandore November 21.  
From Your Family  
\* \* \*

Happy Birthday to TLT on November 18th. Thanks for everything, lady!  
Love, Hillary  
\* \* \*

Happy Birthday, Sue, November 25.  
From Mom & Dad  
\* \* \*

# FOR SALE

SOFA/SLEEPER  
Excellent condition. Asking \$125.  
Call 833-6924 after 4:00 p.m. weekdays

WHITE CORN  
Call Henry Skenandore at 833-2411. Cty. Trunk H - 2112/\$1.00 qt. Corn bread, hulled corn, and corn soup now sold in vacuum-sealed packages.

THE FOLLOWING ITEMS ARE FOR SALE AT 869-2185:

Ford 8H tractor w/blade - \$1500  
1100 bushel corn crib - \$400  
Two - 5 hole, 10 x 15 LT wide track tires and rims for Chev. or GMC - \$40  
150,000 BTU Reddy Heater - \$100  
6 cu. ft. steel wheel barrow - \$40  
8 ft. picnic table - \$35  
5 lawn chairs - \$10  
Beautiful perm. registered black Appaloosa stallion w/white blanket and black spots, star on forehead, excellent disposition. Appraised at \$3,000. Will sacrifice for \$1,000.  
2 new lacrosse sticks and balls - \$20

ALTO SAXAPHONE  
\$300.00  
Call 499-9455

FLOOR MODEL STEREO  
Radio-Turntable-8-track player  
Very good condition - Zenith  
\$150 or best offer  
Call 433-9518

3 MALE PUPPIES  
Sheltie collie & Pekingese mix  
4 weeks old - ready to leave Nov. 10  
Small house dogs  
\$50 each  
Call after 5:00 at 869-2589

OIL DRUM  
(275 gallons) In good condition - asking \$35. Call 833-7502 after 5:00 p.m.

2-BEDROOM HOUSE FOR RENT  
Located on Hwy. 54 - available immediately  
Call 336-0428

# SECOND ANNUAL WISCONSIN INDIAN ARTS FESTIVAL

## POSTER FOR 1985 ARTS FESTIVAL

We are asking Wisconsin Indian artists to compete for the opportunity to have their entry chosen as the poster design for the Second Annual Indian Arts Festival to be held June 8-9, 1985.

**DESCRIPTION:** We are looking for something representing Wisconsin Indians. The poster will be used in advertising the festival. Posters will be sold at the festival.

**SIZE:** We plan for a 15" x 20" poster with the design approximately 11-1/2" x 14-1/2".

**MEDIUM:** A drawing using **CHARCOAL**, **PENCIL** or **PEN AND INK**.

**WHAT TO SEND:** Please send **SLIDES** or a **PHOTO** of your entry, or if that is impossible, please **SEND THE ACTUAL DRAWING**.

**DEADLINE:** Entries must reach the Arts & Sciences Outreach Office by **JANUARY 1, 1985**.

**ENTRIES:** All entries should be sent to the following address:

Arts and Sciences Outreach  
Wis. Indian Arts Festival-1985  
20 Schofield Hall  
UW-Eau Claire  
Eau Claire, WI 54701  
Attention: Veda Stone

Along with your entry include the following information: **NAME**, **ADDRESS**, **TRIBAL AFFILIATION**, **MEDIUM USED**. If you are under 21, please indicate your birth date.

All entries will be evaluated by professional artists from the UW-Eau Claire Art Department. **THE PURCHASE AWARD WILL BE \$200.00 FOR THE WINNER**. The winning entry will become the property of the Wisconsin Indian Arts Festival and will be used in publicizing the festival. Include a stamped, self-addressed envelope, if you wish your entry returned to you.

## THE PENNSYLVANIA STATE UNIVERSITY

DEPARTMENT OF PUBLIC INFORMATION AND RELATIONS

312 OLD MAIN BLDG., UNIVERSITY PARK, PENNSYLVANIA 16802 / TELEPHONE 814 865-7517

University Park, Pa. -- Graduate fellowships are available for American Indian students to enroll in the special education teacher training program at The Pennsylvania State University.

The American Indian Special Education Teacher Training Program was established in 1983 with a three-year grant from the U.S. Department of Education. Participants receive a monthly stipend of about \$600 plus travel expenses and a remission of tuition.

Dr. Anna Gajar, associate professor of special education, is director of the program, which is affiliated with the University's nationally recognized Native American Program.

Dr. Gajar says, "The teacher training program is designed to prepare American Indian students to work with handicapped American Indian children." Special seminars on American Indian Education are conducted with conjunction with the Native American Program.

Graduates of the program are qualified for the following employment opportunities: (a) Teacher of Special Education, (b) Special Education Program Coordinator and Consultant, (c) Special Education Program Developer, and (d) Special Education positions with the Bureau of Indian Affairs.

Applications for Spring Semester, beginning January 1985, are now being accepted. Participants will receive the master of education degree in special education. Depending on applicant qualifications, study will involve a one-year course commitment.

For more information, write Dr. Anna Gajar, American Indian Special Education Teacher Training Program, The Pennsylvania State University,



OFFICE OF THE ASSISTANT DEAN  
SCHOOL OF LAW  
LOS ANGELES, CALIFORNIA 90024

Enclosed are copies of our current mailing of the materials describing UCLA Law School. The information is designed to assist you in providing accurate and important information about UCLA. In assembling these materials we have tried to give you the flavor of UCLA as well as to answer the usual questions about LSAT, GPA, course offerings and the like.

As the enclosed information reveals, UCLA has emerged, in a short period of time, as one of the leading major national law schools. It is our desire to secure applications from outstanding candidates from all over the nation who would be interested in applications from minority persons.

We hope that after examining the materials, you will feel confident in recommending UCLA to your outstanding students.

If you would like any further information about UCLA please feel free to contact me by mail or phone (213) 825-4105. Further information can also be obtained at the Oneida Education Office (414) 869-2173.

Yours truly,

*Michael D. Rappaport*  
Michael D. Rappaport  
Assistant Dean

# WISCONSIN NATIONAL GUARD PAYS OFF

Just when you thought it was safe to go to the beach again, the problem of finding a summer job spoils your plans.

Competition for summer employment is fierce, even for jobs with a minimum wage and few benefits.

But the Wisconsin National Guard can help you plan now for a job that lets you enjoy the summer and still cover next year's expenses.

What's more, you'll be developing skills that apply to a later career, says Sergeant Larry Beckley, Wisconsin National Guard recruiter.

In addition to the long-term benefits, the National Guard helps you meet present expenses.

For working just 39 days a year, the Guard pays a minimum of \$1,250. And, Beckley adds, students who sign up for a regular enlistment are eligible for one of three tuition assistance programs.

## EDUCATIONAL ASSISTANCE BONUS

The National Guard offers a \$4,000 Educational Assistance Bonus to qualified new enlistments, says Beckley.

Reimbursable educational expenses including tuition, fees, books and costs for laboratory or shop supplies are covered up to \$1,000 per year to a maximum of \$4,000 over a six year period.

To receive the assistance bonus, you must choose from certain military specialties, but you'll know if you qualify before signing up.

## STATE TUITION ASSISTANCE

Although most Wisconsin Guard units

offer the educational bonus, a few do not include the appropriate career specialties, Beckley says.

For applicants who desire assignment in one of those units, the Guard has a State Assistance Plan. The State of Wisconsin will reimburse 50 percent of your tuition based on the fee schedule at the University of Wisconsin-Madison campus.

## STUDENT LOAN PROGRAM

Beckley says that older students who have already financed part or all of their education may be especially interested in the Wisconsin National Guard's Student Loan Program.

The plan repays 15 percent or \$500, whichever is greater, of outstanding student loans for each year of service. There is a \$10,000 cap on allowable loans.

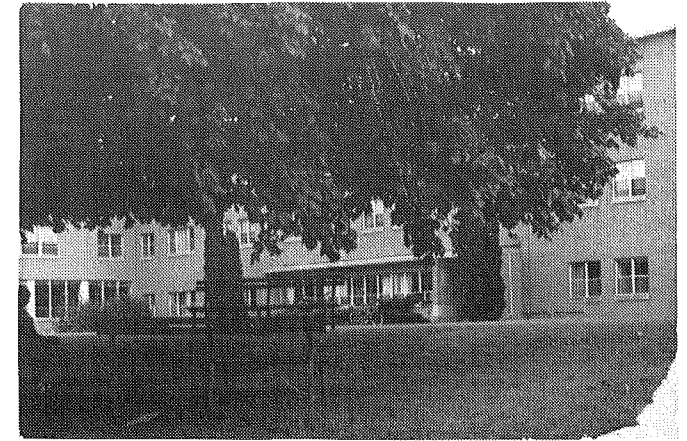
Whether you're a freshman or continuing student, see what the Wisconsin National Guard can offer, Beckley says. For more information, check the white pages under Wisconsin National Guard or call toll-free 1-800-362-7444.

\* \* \* \* \*



# THE ONEIDA RETIREMENT COMMUNITY

## A Beautiful Rural Setting Among Friendly, Caring People in a Safe Environment



The Oneida Tribe of Indians of Wisconsin now has a Retirement Community on the third floor of the Norbert Hill Center at 3000 Seminary Road in Oneida. Persons interested in retiring to a beautiful rural setting among friendly, caring people in a safe environment are invited to come out and view the facility, and meet the staff and residents, and inquire about Admission policies and fees.

Prospective residents must be ambulatory elders who are capable of self-care, do not have special dietary requirements, and desire to live as independently as possible but without the burden of keeping up their own homes and yards. The building is equipped with an elevator, but residents must be capable of walking down stairs in an emergency. Staff are available 24 hours a day for supervision and assistance.

The Oneida Retirement Community will furnish room and board, custodial service, some transportation, and garage stalls, if available. The rooms are furnished, but we encourage residents to bring their own furniture. Laundry facilities are available and residents will be responsible for their own laundry.

A Work Credit Program is available for persons who may choose to work several hours per week at the Center to be credited toward monthly room and board.

Elderly persons on a Fixed Income with few Assets may want to inquire about our Assistance Plan for room and board.

For more information about the Oneida Retirement Community, call Sister Barbara Berthiaume, Manager, at 869-1206 or stop in for a visit at the Norbert Hill Center, Room #1418.

